



STATE CENTER
COMMUNITY COLLEGE DISTRICT

Citizens' Bond Oversight Committee: Bond Measures C & E



QUARTERLY REPORT ENDING
SEPTEMBER 30, 2019

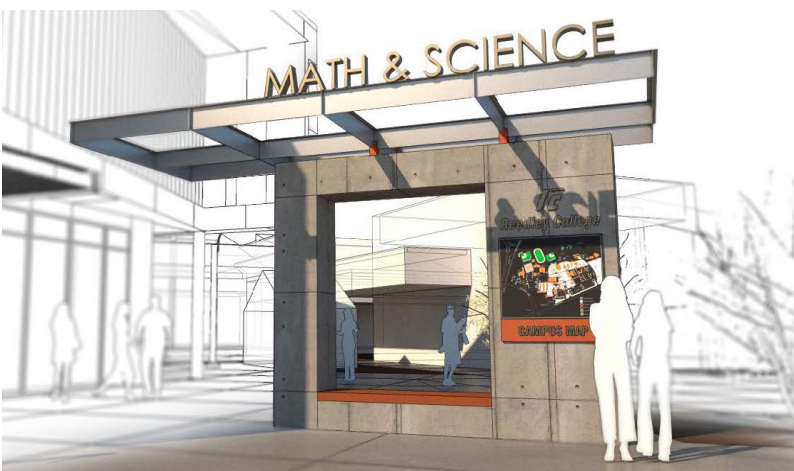
MEASURES C & E: AN OVERVIEW

Valley voters approved State Center Community College's capital improvement facilities bonds Measure E in 2002 and Measure C in 2016. Through projects funded by Measures E and C, State Center Community College District (SCCCD) is putting the Central Valley to work, by creating jobs today and training students for tomorrow's workforce.

CITIZENS' OVERSIGHT COMMITTEE

The Citizens' Oversight Committee plays a significant role in reviewing bond expenditures, informing the public of the District's expenditures of bond proceeds, and providing an annual report to SCCC's Board of Trustees. The Committee shall consist of a minimum of nine (9) members appointed by the Board of Trustees based on criteria established by Proposition 39, and the written applications submitted by each candidate.

The Committee's authorized activities include receiving and reviewing copies of the District's annual independent performance audit and annual independent financial audit (required by Article XIII A of the California Constitution), inspecting college facilities and grounds for which bond proceeds have been or will be expended, reviewing copies of deferred maintenance proposals or plans developed by the District, and also reviewing efforts by the District to maximize bond proceeds by implementing various cost-saving measures.



Reedley College Math, Science, & Engineering wayfinding node rendering by Darden Architects.

Cover Image: Conceptual rendering of the Center for Fine & Performing Arts by Darden Architects.

2019 Citizens' Oversight Committee Members

Mike McNally, Chairperson
Rene Nunez, Vice Chairperson
Alexis Bissell
Alex Contreras
Debbie Darden
Donald Larson
Yery Olivares
Jessica Roche
Donald Slade

Membership Composition:

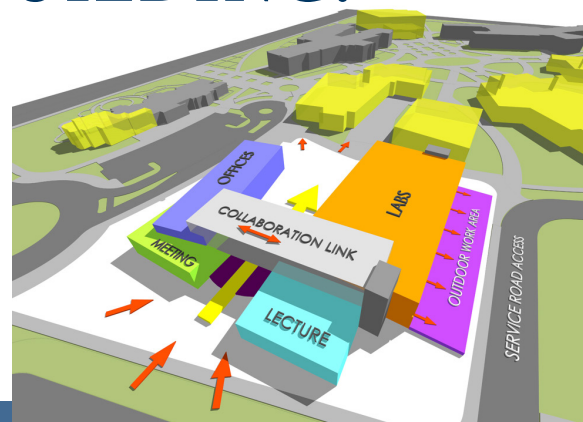
- One (1) student enrolled and active in a community college support group, such as student government;
- One (1) member active in a business organization representing the business community located in the District;
- One (1) member active in a senior citizens' organization;
- One (1) member active in a bona-fide taxpayers' association;
- One (1) member active in a support organization for the college, such as a foundation;
- Two (2) members of the community at-large appointed by the Board.

Clovis Community College

APPLIED TECHNOLOGY BUILDING: PHASE 1

Architect interviews were conducted in September by a committee of District and Clovis Community College staff and faculty. Out of the four architect firms interviewed, Darden Architects was selected with a 90% approval rating.

The Applied Technology building will be funded by not only Measure C, but by matching funds from the state bond program. Planning meetings with campus faculty and staff are underway. Due to the aggressive California Community Colleges Chancellor's Office (CCCCO) time lines, preliminary plans need to be completed by March 2020.



ARCHITECT: Darden Architects
BUDGET: \$51.48 Million (\$25.74 Million Measure C)
EXPENSED TO DATE: \$0

Fresno City College

NEW FIRST RESPONDERS CENTER



The Police and Fire Academies are among the most impacted programs at FCC. The District pledged through Measure E that a new campus would be built to house the Police and Fire Academies. The funds from Measure E were insufficient to build a campus, but with the passing of Measure C, funds became available to establish a sufficient home for our Police and Fire Academies.

Phase I of this project will include permanent facilities to house academies for police, fire and EMT in addition to master planning of the campus for future expansion. It is also intended that Phase I include a burn tower for Fire Academy training and a scenario village for the Police Academy.

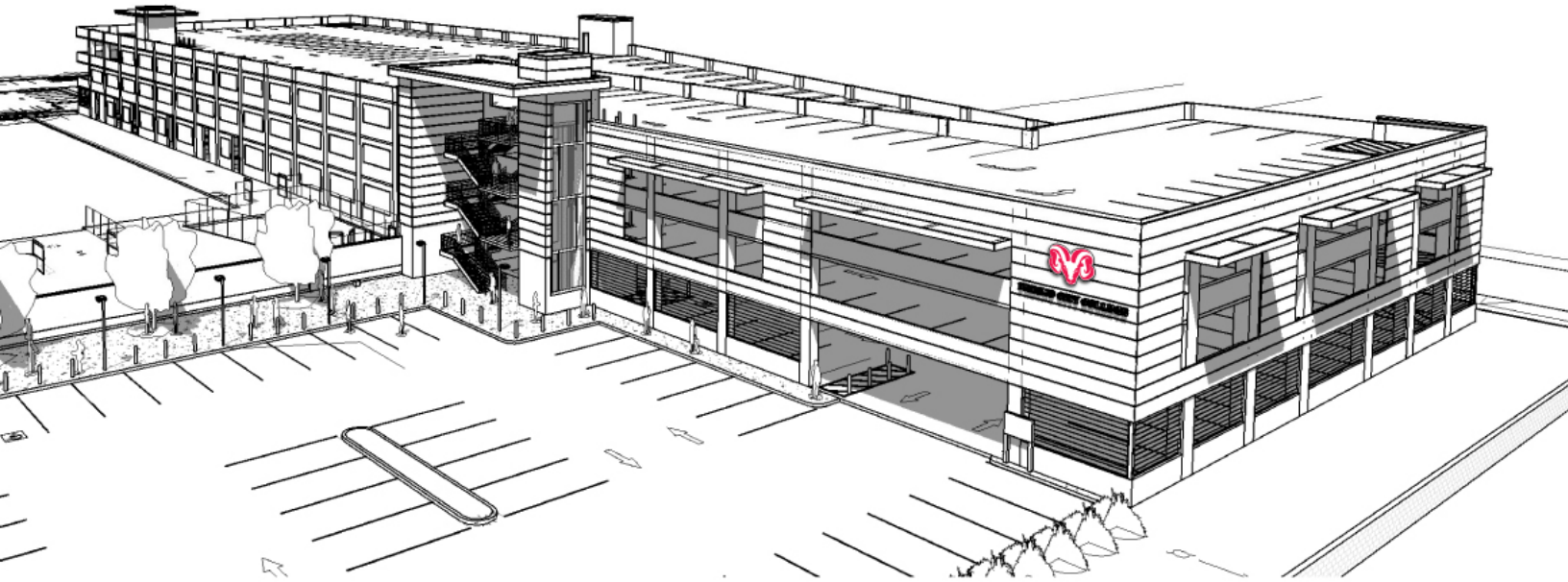
Approximately 40 acres of property has been acquired at Willow and North Avenues for the center.

In coordination with campus staff and local first responder command, it was recommended to the Board of Trustees at the August Board meeting to enter into an agreement with SIM-PBK as the project architects. SIM-PBK is conducting planning and design meetings through the fall semester with user groups and community agencies. The design team visited similar training facilities in preparation for designing the New First Responders campus.

ARCHITECT: SIM-PBK
BUDGET: \$45 Million
EXPENSED TO DATE: \$2.45 Million

Fresno City College Continued...

PARKING EXPANSION



Conceptual Drawing by Moreto, Mathison & Associates.

Currently, Fresno City College (FCC) parking is insufficient for the enrollment levels of the campus. This long awaited project will address FCC's ongoing parking needs through land acquisition, relocating the District Office, and building additional parking facilities. Relocation of the District Office and staff will provide space for additional parking facilities, filling an immediate need. The District has acquired three parcels just north of the existing District Office along the south side of Cambridge Avenue.

On April 9, 2019, the Board of Trustees (BOT) approved the use of the Design-Build procurement process for the construction of a new parking structure. The structure is to be located north of the former District Office between Cambridge Ave and Weldon Avenue.

Bidding documents for the Design-Build process by Moreto, Mathison and Associates and Parking Design Group are complete. The District issued a Request for Qualification (RFQ) in order to pre-qualify Design-Build entities (DBEs) and a release of a Request for Proposals (RFPs) was issued in August. Design-Build Contractor interviews are scheduled for October. The District plans to award a Design-Build contract by the end of 2019.

Currently, the base bid includes 778 stalls, with an alternative proposal for an additional 170 stalls, totaling 967 stalls. Parking Design Group has also analyzed existing surface parking lots for recommended reconfigurations in an effort to gain additional stalls throughout the campus. Their results concluded that redesign of existing lots could create approximately 700 stalls.

ARCHITECT: Moreto, Mathison & Associates
BUDGET: \$22 Million (\$2 million from campus)
EXPENSED TO DATE: \$3.23 Million

NEW SCIENCE BUILDING



ARCHITECT: Lionakis
PROJECT BUDGET: \$80 Million
EXPENSED TO DATE: \$999,195

Constructed in 1973, the existing science facility is nearing the end of its useful life cycle and will require major modernization or replacement. Through the FCC planning process it was determined that a new Science Building was required. The new building will feature modern labs across several science disciplines and will also house flexible student study areas. Locating the new Science Building along Blackstone Avenue will alleviate some of the parking

demand on the main part of campus and will serve as a new front door to Fresno City College.

The District developed a Request for Proposal (RFP) for architect services and Lionakis Architects was chosen through the architect selection process, which included a series of interviews. Floor plans and exteriors are nearing completion as Lionakis is moving into the design development phase of the project. Faculty and staff have played an integral role in determining the essential elements of this new Science Building.

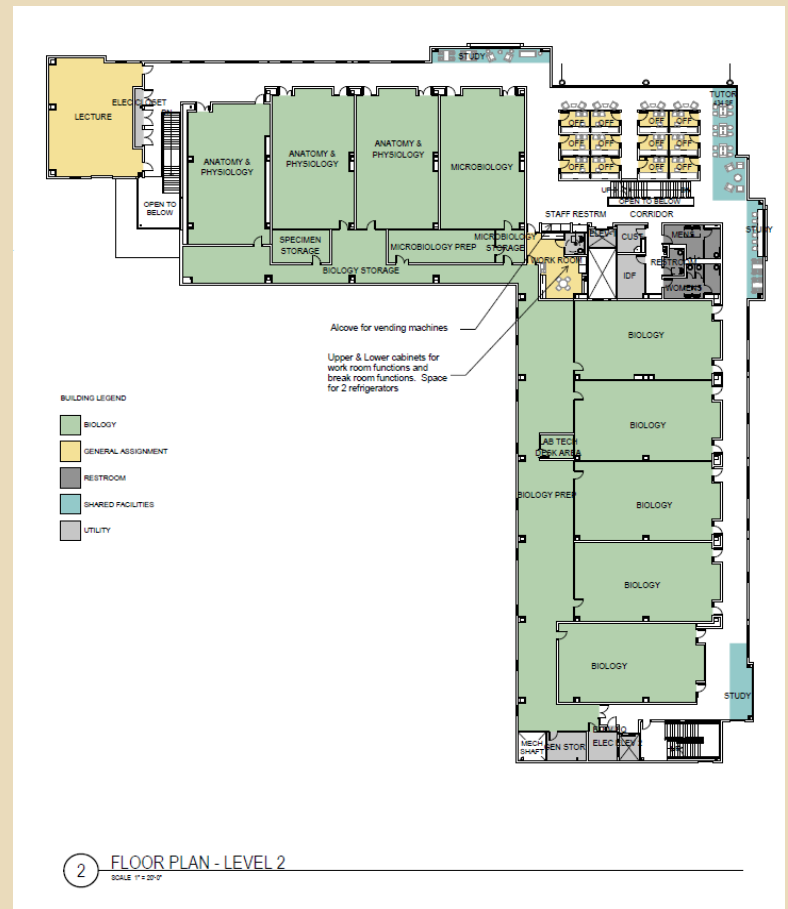
A PEEK INSIDE: THE FCC NEW SCIENCE BUILDING

One of the much anticipated projects at the FCC campus is the New Science Building with its modern and much needed laboratories.

The first floor will house Fresno Unified School District's Design Science High School, in addition to physics and engineering laboratories.

Of the three floors, the second floor (shown right) will house the majority of the new science laboratories, including anatomy, physiology, and biology.

The third floor of the building will house the chemistry laboratories.



Fresno City College Continued...

NEW WEST FRESNO CAREER TECHNICAL CENTER



ARCHITECT: SIM-PBK
BUDGET: \$70 Million (Measure C+E)
EXPENSED TO DATE: \$7.26 Million (Measure C+E)

Through the Educational Master Plan and extensive meetings with students, staff, and community members, there was a clear need for a new college center in the West Fresno area. This satellite campus will serve as the new home to the Career and Technology Center (CTC).

Phase I of the project will include facilities for the Automotive Technology and Automotive Collision Programs from both FCC and CTC. The new campus will also provide capacity for general education classrooms and student services. At full build-out, this campus will provide the West Fresno community with a complete college center offering diverse educational opportunities, from career technology courses to transferable college credits.

Through donation and purchases, land was acquired in June 2018, and SIM-PBK was selected as the project architect. The construction documents for the site work were approved by the Division of the State Architect (DSA) and the site work will go out to bid in mid-October. Construction documents for the buildings were submitted to DSA in September 2019.

RELOCATION OF MAINTENANCE & OPERATIONS

The FCC Master Plan situated the FCC new Science Building near Blackstone Avenue to serve as a new front door to the college. Presently, part of the District's Maintenance and Operations Department is located at the FCC Science Building's planned site. Therefore, a secondary effect of the new Science Building is the relocation of the maintenance and operations facilities. As Lionakis Architects designs and develops the new Science Building, the District is planning a new home for their Maintenance & Operations Department.

This new facility will be located in the north east area of campus and allow the Maintenance and Operations Department to continue to serve and support current and future FCC campus facilities. With the construction of FCC's new Science Building at Blackstone & Weldon, the District's Police Department will need to be relocated into the old District Office at 1525 E. Weldon.

ARCHITECT: Darden Architects
BUDGET: \$3 Million
EXPENSED TO DATE: \$217,077

Darden Architects continues to work with our maintenance and operations staff to complete the design. Construction documents are planned to be submitted to DSA in February 2020.

Reedley College

MATH, SCIENCE & ENGINEERING BUILDING

The new Math, Science and Engineering Building will enable Reedley College to better train our students in advanced technical areas. This 20,000 s.f. building will house the dental program, nursing program, chemistry and bio-chemistry labs, and the math tutoring center. Relocating the dental program into this new building will also create needed space for the future growth of the Ag Mechanic Program expansion and modernization.



ARCHITECT: Darden Architects
CONTRACTOR: Seals Construction, Inc.
BUDGET: \$20.7 Million
EXPENSED TO DATE: \$1.22 Million

In March 2017, Darden Architects was approved as the project architect. Darden Architects worked with site faculty, staff, and administration on planning and design through much of 2018. Design and approval from the Division of State Architect is complete; soon the project will go out to bid for construction in mid-October. Seals Construction, Inc. was awarded construction contract at the November Board of Trustees meeting and construction is to commence in January 2020.

CENTER FOR FINE & PERFORMING ARTS

The Center for Fine & Performing Arts has been on the planning books since 1975. It will provide higher educational opportunities for local artists and serve the greater Reedley area. This venue will be used for educational programs, live productions, and campus and community events. Plans include fixed seating, an art gallery, lobby, concessions, a green room, meeting spaces, and a box office.

ARCHITECT: Darden Architects
BUDGET: \$25.2 Million
EXPENSED TO DATE: \$208,703

Darden Architects was approved on June 12, 2018 as project architect. Planning and programming meetings with faculty and administration have commenced. Schematic design, including floor plans and elevations, are wrapping up. Darden Architects is diligently collaborating with faculty and user groups as they work through the design development phase.



Madera Community College Center

CENTER FOR AGRICULTURE & TECHNOLOGY

In October 2018, SCCC broke ground on the Center for Agriculture and Technology (CAT) at Madera Community College Center (MCCC). The new building will provide additional laboratory and classroom space to benefit existing and new vocational training programs.

The building is approximately 10,000 s.f. and will house general educational classrooms, a plant science lab, faculty offices, and shops for agricultural mechanics, welding, and industrial maintenance.

Construction is ongoing, anticipating a late fall completion followed by a move-in.



ARCHITECT: Teter Architects & Engineers
CONTRACTOR: BMY Construction Group, Inc.
BUDGET: \$6.35 Million
EXPENSED TO DATE: \$3.68 Million



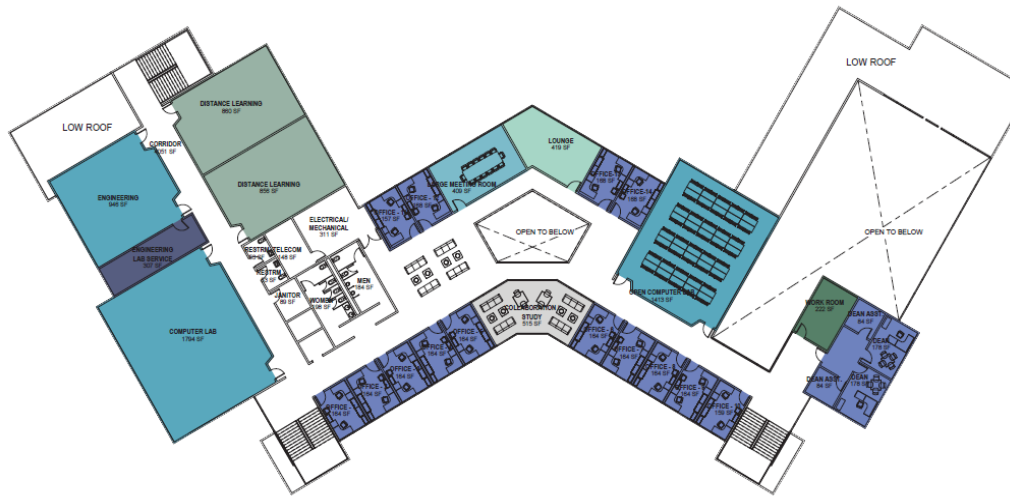
Construction Underway
August & September 2019

ACADEMIC VILLAGE 2 EXPANSION

In order to meet the additional needs and growth of the MCCC campus, expansion of the Academic Village is required.

The new Academic Village 2 building is planned to house general education classrooms, distance learning classrooms, a student success center, an expanded library, and labs for nursing, computers, and criminology. Plans for Phase I also include expanded parking on the west side of campus.

In November 2017, Darden Architects was approved as the project architect. Planning and design are ongoing as the architect works with site faculty, staff, and students. Schematic design, floor plans, and elevations are nearing completion as Darden moves into the design development phase.



One of many proposed floor plans of the multi-story Academic Village 2 Expansion.

ARCHITECT: Darden Architects
BUDGET: \$35 Million
EXPENSED TO DATE: \$264,442

Oakhurst Community College Center A NEW CAMPUS

The current Oakhurst Community College Center (OCCC), which includes 10 portables situated on four acres, is no longer adequate to support the current and anticipated future needs of the center.

In July 2018, the District purchased 30 acres of property on Westlake Drive in Oakhurst. Paul Halajian Architects, partnering with Steinberg Hart, was approved by the Board of Trustees in June 2018. Architects, faculty, staff and students continue to work towards completing the development of the floor plans and elevations.

Phase I of the new campus will include a mixed use building housing educational, administrative, and community spaces. Phase I will also include master planning for the entire campus.



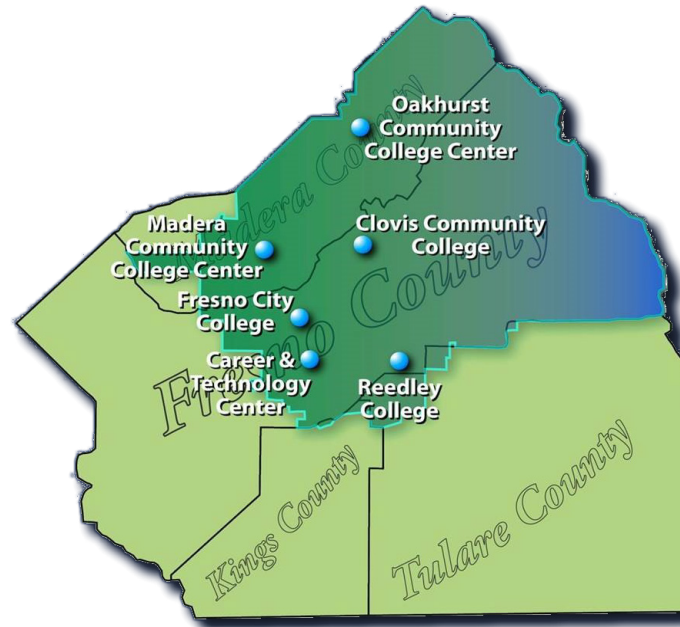
ARCHITECT: Paul Halajian Architects/Steinberg Hart
BUDGET: \$25 Million
EXPENSED TO DATE: \$2.17 Million

District Projects

FACILITIES MASTER PLAN

Between 2015-2017, each college updated its Educational Master Plan (EMP). Following any revision to the Educational Master Plan, the District updates the Facilities Master Plan (FMP). This update includes revising district-wide design standards, landscape and lighting reviews and recommendations, ADA transition plan, parking and commuting studies, developing a district-wide technology plan, updating space inventory and condition assessments, and assisting with identifying space needs for the new District Office. The FMP Update was developed to guide the District's efforts in the bond program and to assist in the prioritization of district-wide initiatives and needs.

District and campus staff are working with Darden Architects to update the 2012 Facilities Master Plan. Meetings with each of the colleges' faculty, staff, students, and surrounding community were held. The final draft for the FMP Update is anticipated to be submitted to the Board of Trustees in November 2019.



ARCHITECT: Darden Architects
BUDGET: \$525,000
EXPENSED TO DATE: \$491,588

DISTRICT OFFICE RELOCATION



Through the Fresno City College planning process, it was determined that relocating the District Office would meet growing parking needs and provide room for a new Science Building along Blackstone Avenue. The historic Guarantee Savings Building was identified as a potential property for the new District Office location. In June 2018, the District finalized the purchase of the building located at 1171 Fulton Street and its adjacent parking structure. Most of the District Office staff have moved into their new offices.

Design of the Lobby and Board Room is complete with the construction going out to bid mid-October. Award of the construction contract is expected in December with construction starting January 2020 and finishing in April 2020. The 8th floor renovation is now complete. Upon move out of tenants, renovation of the 12th floor will start to house more staff from Educational Services.

ARCHITECT: Darden Architects
BUDGET: \$18 Million
EXPENSED TO DATE: \$15.78 Million

Completed Bond Projects:

Fresno City College:

- Campus Planning (Expensed: \$305,403)

Future Bond Projects:

District-wide:

- Accessibility Improvements (Budget: \$15 Million)
- Infrastructure Improvements (Budget: \$20 Million)
- Technology Improvements (Budget: \$10 Million, \$379,779 Expensed)

Clovis Community College:

- New Applied Technology Facilities (Budget: \$70 Million)

Fresno City College:

- Modernize Existing Math Science Building (Budget: \$10 Million, \$2,252 Expensed)

Reedley College:

- Agriculture Mechanics Expansion & Modernization (Budget: \$21 Million)



“Empowering Through
Educational
Excellence”

SCCCD Vision Statement

Board of Trustees

Deborah J. Ikeda, President
Eric Payne, Vice President
Annalisa Perea, Secretary
Richard Caglia, Trustee
Magdalena Gomez, Trustee
Bobby Kahn, Trustee
John Leal, Trustee

District Administration

Chancellor
Dr. Paul Parnell

Fresno City College President
Dr. Carole Goldsmith

Reedley College President
Dr. Jerry L. Buckley

Clovis Community College President
Dr. Lori Bennett

Madera Community College Center President
Angel Reyna

Vice Chancellor, Operations & Information Systems
Christine D. Miktarian

Vice Chancellor, Finance & Administration
Cheryl Sullivan

*Vice Chancellor, Educational Services
& Institutional Effectiveness*
Jerome Countee

Vice Chancellor, Human Resources
Julianna Mosier

Facilities Staff:

George Cummings, District Director of Facilities Planning
Shannon Robertson, District Director of Construction Services
Teresa Campagna Bryant, Construction Services Coordinator
Anne Adams, Exec. Assistant to the Vice Chancellor, Operations & IS
Kiesha Oliver, Administrative Assistant
Annie Graham, Office Specialist