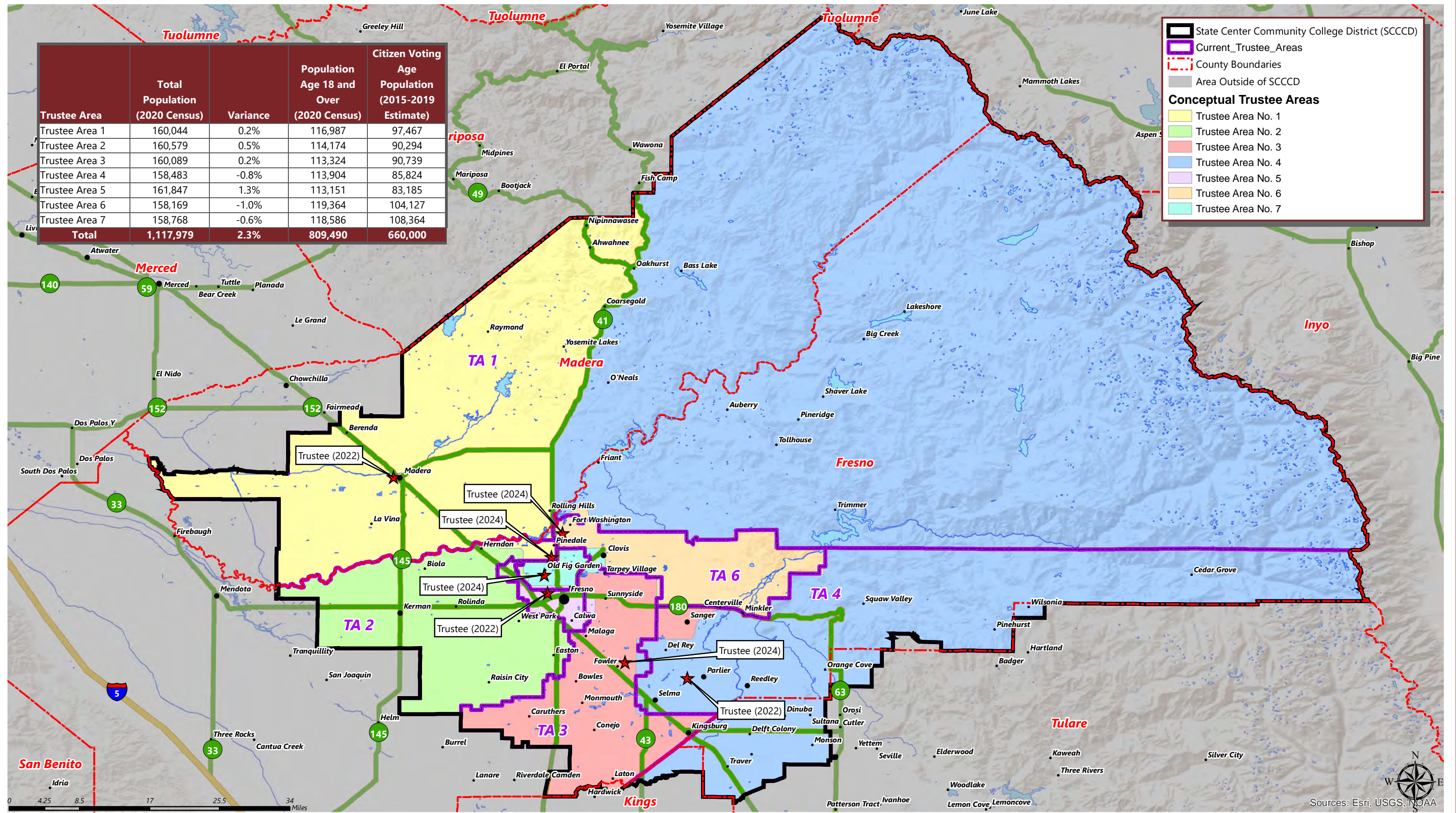
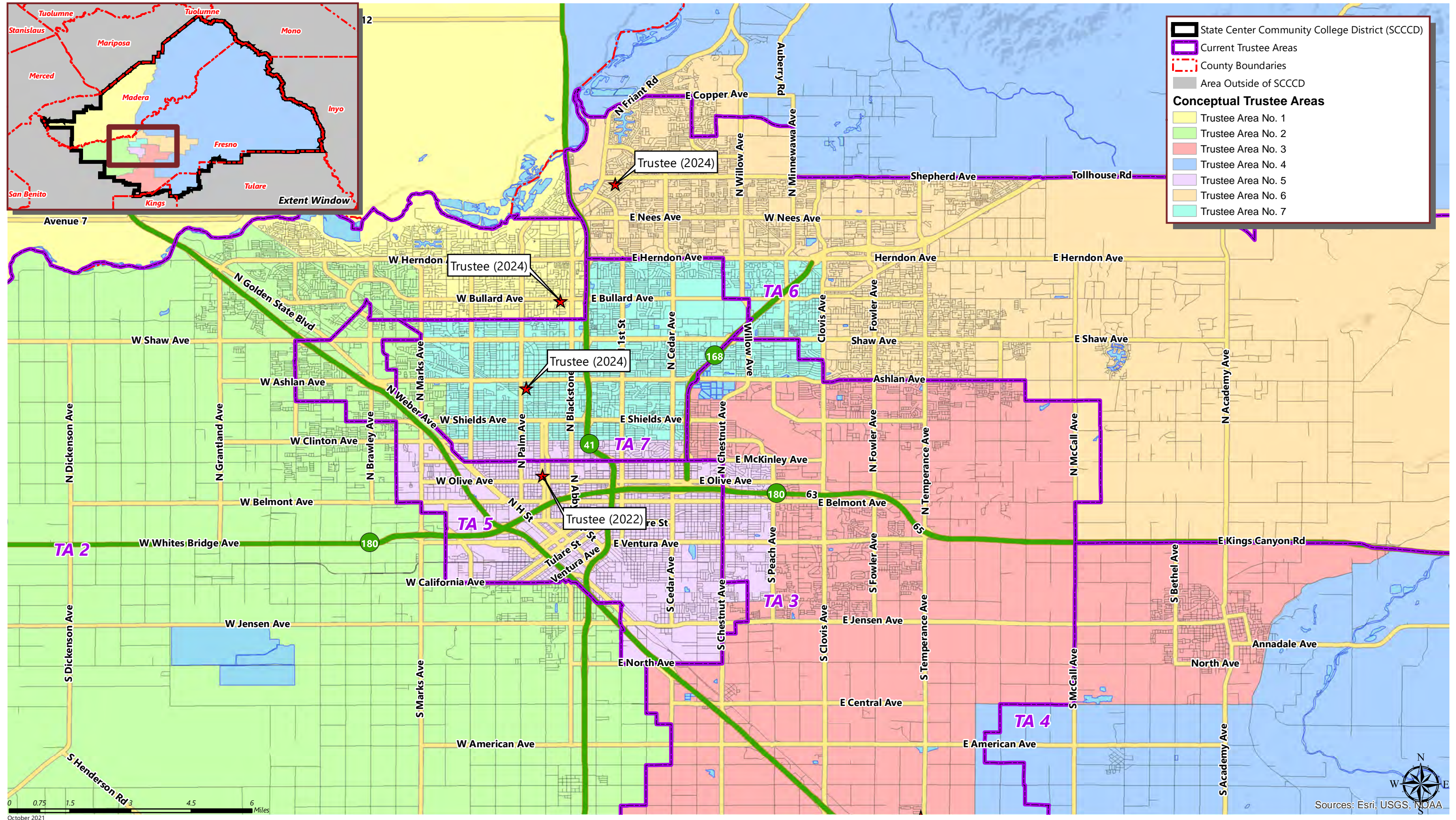


Trustee Area	Total Population (2020 Census)	Variance	Population Age 18 and Over (2020 Census)	Citizen Voting Age Population (2015-2019 Estimate)
Trustee Area 1	160,044	0.2%	116,987	97,467
Trustee Area 2	160,579	0.5%	114,174	90,294
Trustee Area 3	160,089	0.2%	113,324	90,739
Trustee Area 4	158,483	-0.8%	113,904	85,824
Trustee Area 5	161,847	1.3%	113,151	83,185
Trustee Area 6	158,169	-1.0%	119,364	104,127
Trustee Area 7	158,768	-0.6%	118,586	108,364
Total	1,117,979	2.3%	809,490	660,000



November 2021

Sources: Esri, USGS, NOAA



STATE CENTER COMMUNITY COLLEGE DISTRICT

CONCEPTUAL TRUSTEE AREAS - SCENARIO 6

Total Population:	1,117,979	Ideal Population:	159,711	Variance:	2.3%
--------------------------	------------------	--------------------------	----------------	------------------	-------------

Total Population (2020 Census)							
	Trustee Area 1	Trustee Area 2	Trustee Area 3	Trustee Area 4	Trustee Area 5	Trustee Area 6	Trustee Area 7
Population	160,044	160,579	160,089	158,483	161,847	158,169	158,768
Population Variance	333	868	378	-1,228	2,136	-1,542	-943
	0.2%	0.5%	0.2%	-0.8%	1.3%	-1.0%	-0.6%
Hispanic/Latino	58.0%	54.8%	54.2%	67.9%	68.1%	24.9%	48.3%
White	31.6%	19.9%	22.3%	25.3%	11.1%	52.8%	31.4%
Black/ African American	2.5%	7.4%	2.7%	0.5%	7.1%	2.4%	6.4%
American Indian/ Alaska Native	0.7%	0.5%	0.5%	1.0%	0.7%	0.5%	0.8%
Asian	4.1%	14.0%	17.0%	2.5%	10.4%	14.0%	8.5%
Native Hawaiian/ Other Pacific Islander	0.1%	0.1%	0.1%	0.1%	0.1%	0.1%	0.2%
Other	0.5%	0.6%	0.6%	0.5%	0.4%	0.6%	0.5%
Two or More Races	2.7%	2.5%	2.7%	2.3%	1.9%	4.8%	3.8%

Population 18 and Over (2020 Census)							
	Trustee Area 1	Trustee Area 2	Trustee Area 3	Trustee Area 4	Trustee Area 5	Trustee Area 6	Trustee Area 7
Population	116,987	114,174	113,324	113,904	113,151	119,364	118,586
Hispanic/Latino	52.3%	50.4%	51.1%	63.3%	65.1%	22.2%	44.0%
White	36.6%	23.4%	25.6%	29.6%	13.9%	56.1%	36.2%
Black/ African American	2.7%	7.5%	2.8%	0.5%	7.4%	2.5%	6.2%
American Indian/ Alaska Native	0.7%	0.6%	0.5%	1.0%	0.8%	0.5%	0.9%
Asian	4.6%	15.0%	17.0%	2.9%	10.4%	14.2%	8.5%
Native Hawaiian/ Other Pacific Islander	0.1%	0.1%	0.1%	0.1%	0.1%	0.1%	0.2%
Other	0.5%	0.6%	0.6%	0.4%	0.4%	0.5%	0.5%
Two or More Races	2.6%	2.3%	2.4%	2.3%	1.8%	3.9%	3.4%

Citizens by Voting Age Population Estimate (2015-2019)							
	Trustee Area 1	Trustee Area 2	Trustee Area 3	Trustee Area 4	Trustee Area 5	Trustee Area 6	Trustee Area 7
Population	97,467	90,294	90,739	85,824	83,185	104,127	108,364
Hispanic/Latino	40.4%	45.8%	46.8%	53.0%	58.0%	20.7%	37.8%
White	48.1%	31.3%	32.0%	40.4%	19.4%	63.7%	45.2%
Black/ African American	4.6%	9.7%	3.0%	0.9%	9.7%	2.2%	7.0%
American Indian/ Alaska Native	0.7%	0.5%	0.5%	1.0%	0.7%	0.3%	0.7%
Asian	4.5%	11.2%	15.7%	2.9%	10.8%	11.2%	7.2%
Native Hawaiian/ Other Pacific Islander	0.0%	0.0%	0.0%	0.1%	0.1%	0.1%	0.1%
Other	N/A	N/A	N/A	N/A	N/A	N/A	N/A
Two or More Races	1.7%	1.5%	1.9%	1.8%	1.3%	1.8%	2.1%