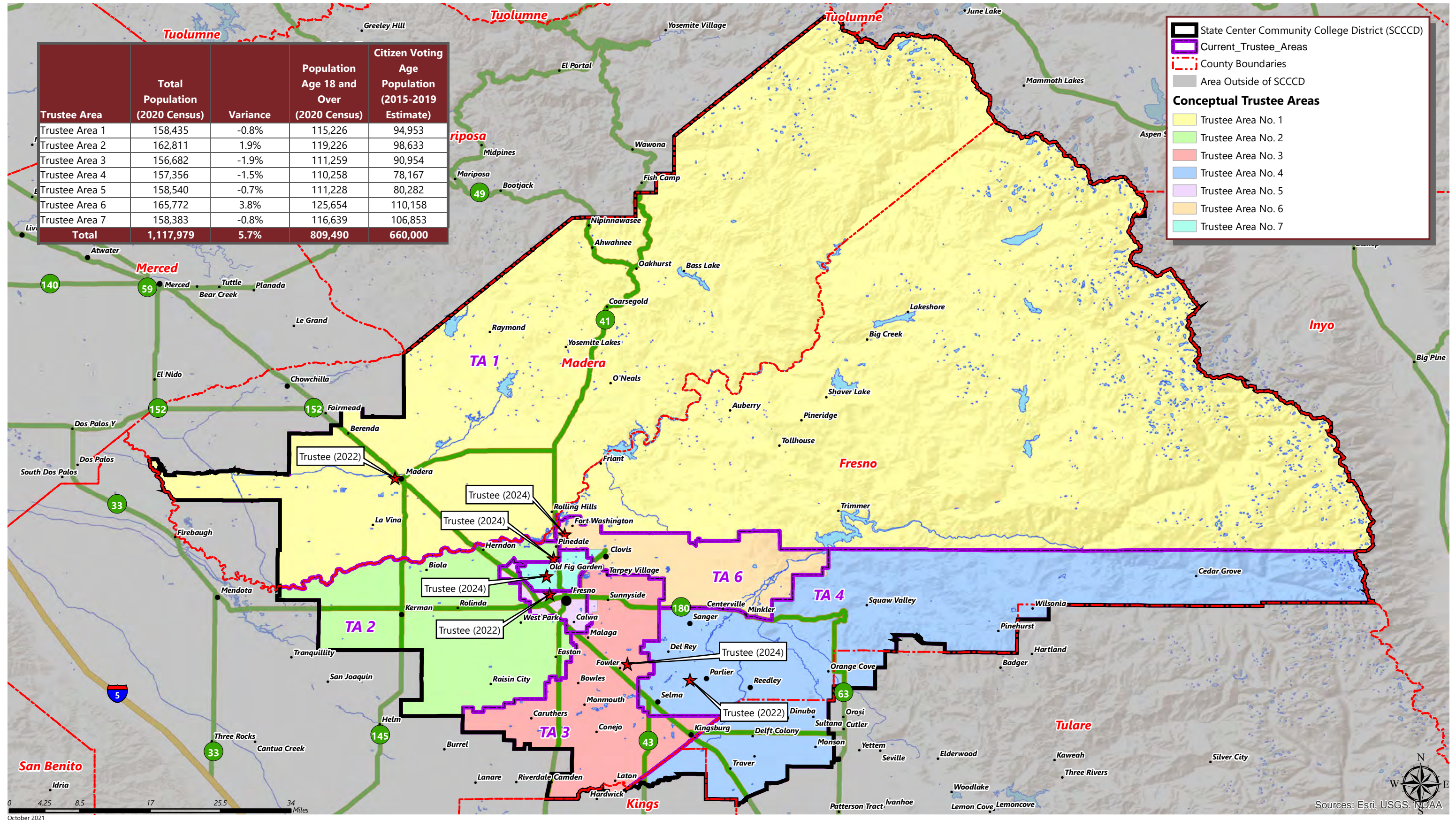


Trustee Area	Total Population (2020 Census)	Variance	Population Age 18 and Over (2020 Census)	Citizen Voting Age Population (2015-2019 Estimate)
Trustee Area 1	158,435	-0.8%	115,226	94,953
Trustee Area 2	162,811	1.9%	119,226	98,633
Trustee Area 3	156,682	-1.9%	111,259	90,954
Trustee Area 4	157,356	-1.5%	110,258	78,167
Trustee Area 5	158,540	-0.7%	111,228	80,282
Trustee Area 6	165,772	3.8%	125,654	110,158
Trustee Area 7	158,383	-0.8%	116,639	106,853
Total	1,117,979	5.7%	809,490	660,000



October 2021

Sources: Esri, USGS, NOAA

STATE CENTER COMMUNITY COLLEGE DISTRICT

CONCEPTUAL TRUSTEE AREAS - SCENARIO 4

Total Population:	1,117,979	Ideal Population:	159,711	Variance:	5.7%
--------------------------	------------------	--------------------------	----------------	------------------	-------------

Total Population (2020 Census)							
	Trustee Area 1	Trustee Area 2	Trustee Area 3	Trustee Area 4	Trustee Area 5	Trustee Area 6	Trustee Area 7
Population	158,435	162,811	156,682	157,356	158,540	165,772	158,383
Population Variance	-1,276	3,100	-3,029	-2,355	-1,171	6,061	-1,328
	-0.8%	1.9%	-1.9%	-1.5%	-0.7%	3.8%	-0.8%
Hispanic/Latino	54.3%	49.9%	48.3%	80.3%	67.4%	26.4%	51.5%
White	35.2%	27.3%	24.5%	14.5%	11.1%	52.3%	27.8%
Black/ African American	1.7%	6.1%	3.5%	0.5%	7.6%	2.5%	7.3%
American Indian/ Alaska Native	1.3%	0.5%	0.6%	0.3%	0.7%	0.5%	0.8%
Asian	3.8%	12.8%	19.3%	2.6%	10.8%	12.8%	8.4%
Native Hawaiian/ Other Pacific Islander	0.1%	0.1%	0.1%	0.1%	0.1%	0.2%	0.2%
Other	0.5%	0.6%	0.6%	0.4%	0.5%	0.6%	0.5%
Two or More Races	3.1%	2.8%	3.0%	1.4%	1.9%	4.8%	3.5%

Population 18 and Over (2020 Census)							
	Trustee Area 1	Trustee Area 2	Trustee Area 3	Trustee Area 4	Trustee Area 5	Trustee Area 6	Trustee Area 7
Population	115,226	119,226	111,259	110,258	111,228	125,654	116,639
Hispanic/Latino	48.7%	45.2%	45.0%	77.1%	64.3%	23.6%	47.1%
White	40.5%	31.5%	28.2%	17.3%	13.7%	55.8%	32.6%
Black/ African American	1.9%	6.1%	3.6%	0.5%	7.8%	2.5%	7.1%
American Indian/ Alaska Native	1.3%	0.5%	0.6%	0.3%	0.7%	0.5%	0.8%
Asian	4.0%	13.4%	19.2%	3.0%	11.0%	13.0%	8.5%
Native Hawaiian/ Other Pacific Islander	0.1%	0.1%	0.1%	0.1%	0.1%	0.2%	0.2%
Other	0.5%	0.6%	0.6%	0.4%	0.5%	0.5%	0.5%
Two or More Races	3.1%	2.5%	2.6%	1.4%	1.9%	3.9%	3.2%

Citizens by Voting Age Population Estimate (2015-2019)							
	Trustee Area 1	Trustee Area 2	Trustee Area 3	Trustee Area 4	Trustee Area 5	Trustee Area 6	Trustee Area 7
Population	94,953	98,633	90,954	78,167	80,282	110,158	106,853
Hispanic/Latino	37.9%	39.7%	41.4%	68.7%	56.2%	21.4%	41.4%
White	52.5%	40.1%	34.7%	25.4%	19.4%	63.9%	40.7%
Black/ African American	3.2%	7.7%	4.0%	0.7%	10.7%	2.3%	8.2%
American Indian/ Alaska Native	1.4%	0.3%	0.5%	0.2%	0.8%	0.3%	0.7%
Asian	3.1%	10.7%	17.2%	3.2%	11.4%	10.2%	7.1%
Native Hawaiian/ Other Pacific Islander	0.0%	0.0%	0.2%	0.0%	0.1%	0.1%	0.0%
Other	N/A	N/A	N/A	N/A	N/A	N/A	N/A
Two or More Races	1.8%	1.5%	1.9%	1.7%	1.4%	1.9%	1.9%