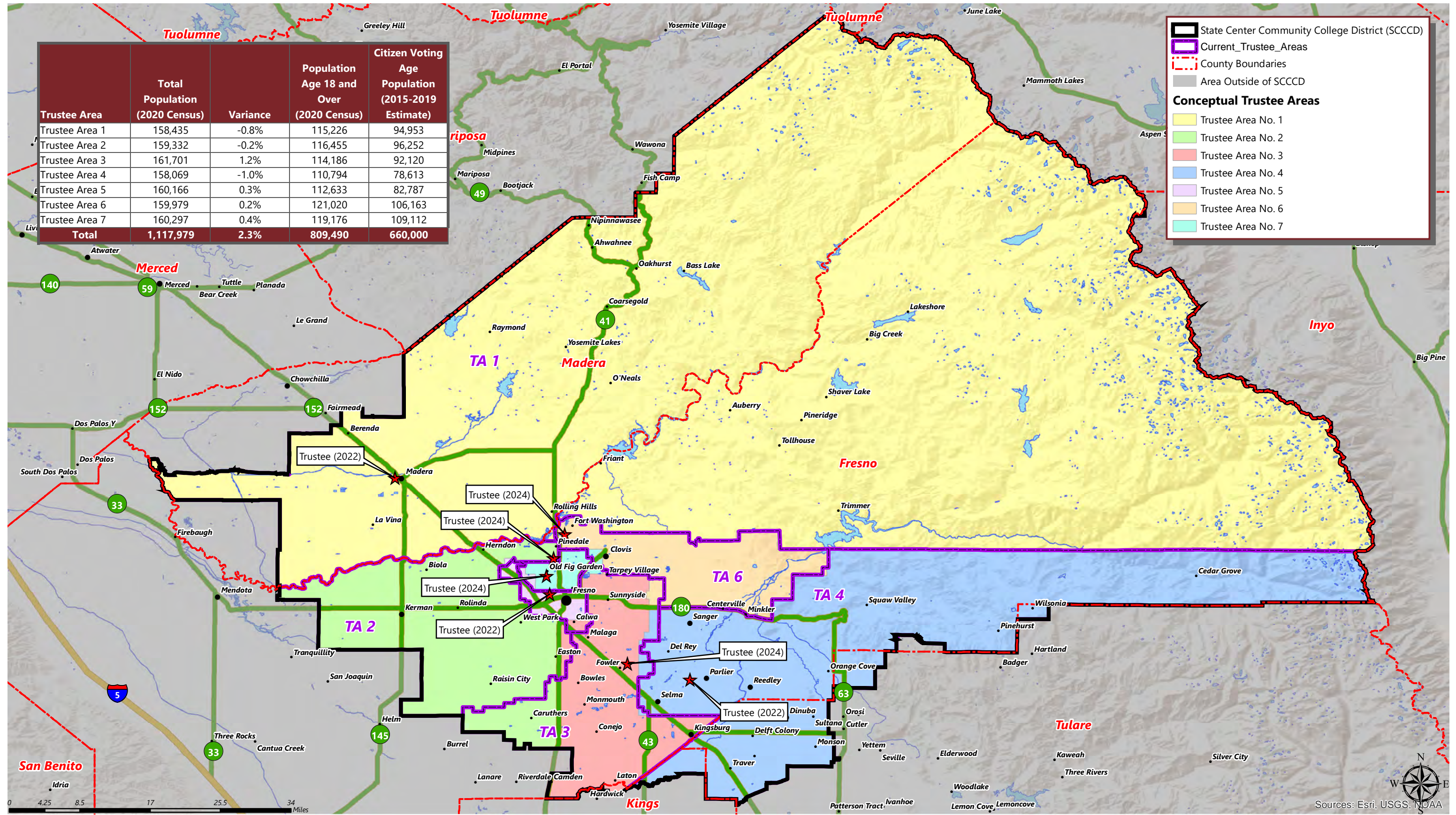
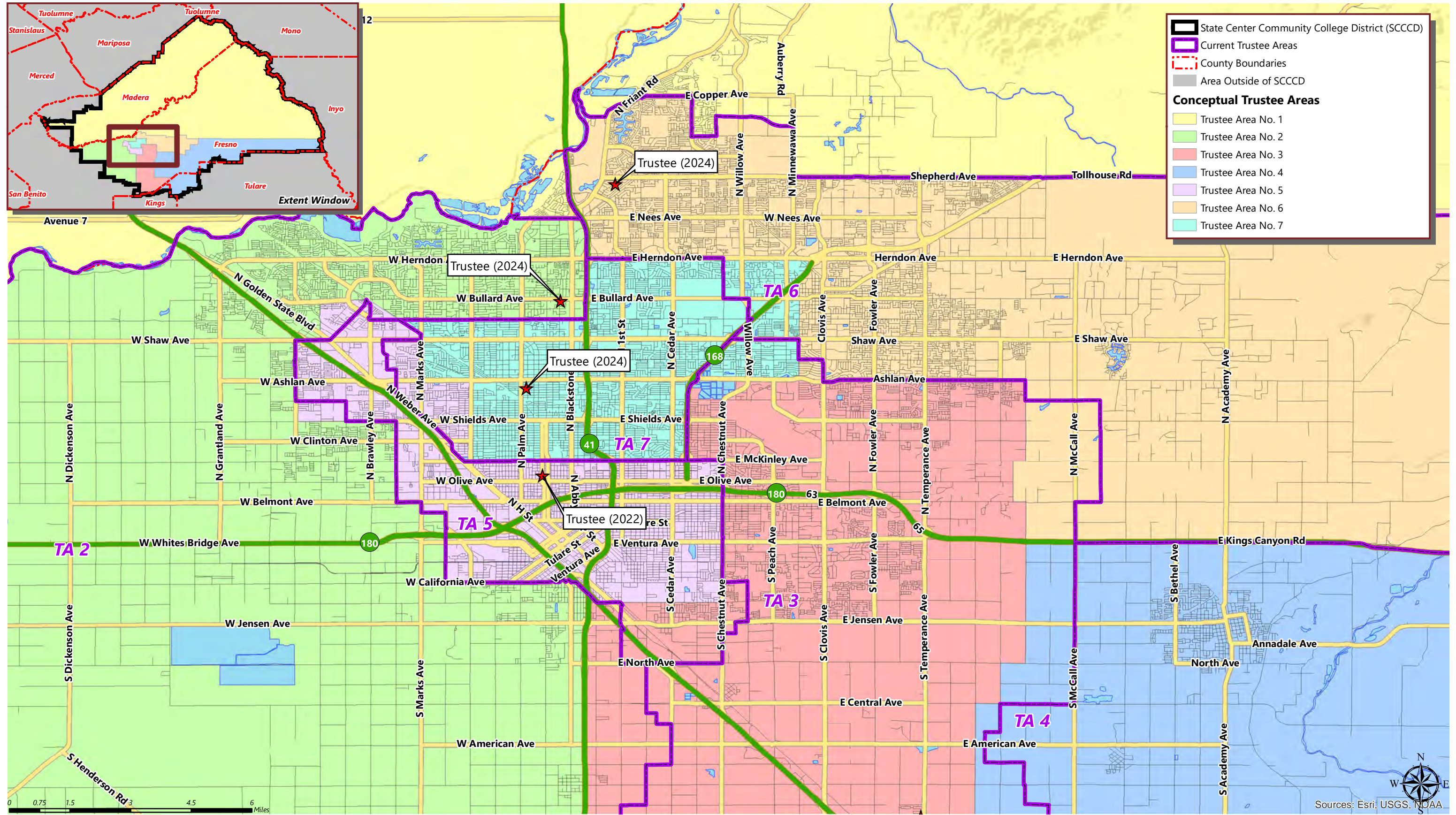


Trustee Area	Total Population (2020 Census)	Variance	Population Age 18 and Over (2020 Census)	Citizen Voting Population (2015-2019 Estimate)
Trustee Area 1	158,435	-0.8%	115,226	94,953
Trustee Area 2	159,332	-0.2%	116,455	96,252
Trustee Area 3	161,701	1.2%	114,186	92,120
Trustee Area 4	158,069	-1.0%	110,794	78,613
Trustee Area 5	160,166	0.3%	112,633	82,787
Trustee Area 6	159,979	0.2%	121,020	106,163
Trustee Area 7	160,297	0.4%	119,176	109,112
<b>Total</b>	<b>1,117,979</b>	<b>2.3%</b>	<b>809,490</b>	<b>660,000</b>



October 2021

Sources: Esri, USGS, NOAA



**STATE CENTER COMMUNITY COLLEGE DISTRICT**

CONCEPTUAL TRUSTEE AREAS - SCENARIO 3

<b>Total Population:</b>	<b>1,117,979</b>	<b>Ideal Population:</b>	<b>159,711</b>	<b>Variance:</b>	<b>2.3%</b>
--------------------------	------------------	--------------------------	----------------	------------------	-------------

Total Population (2020 Census)							
	Trustee Area 1	Trustee Area 2	Trustee Area 3	Trustee Area 4	Trustee Area 5	Trustee Area 6	Trustee Area 7
Population	158,435	159,332	161,701	158,069	160,166	159,979	160,297
Population Variance	-1,276	-379	1,990	-1,642	455	268	586
	-0.8%	-0.2%	1.2%	-1.0%	0.3%	0.2%	0.4%
Hispanic/Latino	54.3%	50.6%	51.2%	80.2%	65.6%	25.8%	49.1%
White	35.2%	27.1%	21.2%	14.6%	13.1%	52.6%	30.2%
Black/ African American	1.7%	5.8%	4.1%	0.5%	7.9%	2.4%	6.6%
American Indian/ Alaska Native	1.3%	0.5%	0.5%	0.3%	0.7%	0.5%	0.8%
Asian	3.8%	12.6%	19.6%	2.6%	9.8%	13.2%	8.8%
Native Hawaiian/ Other Pacific Islander	0.1%	0.1%	0.1%	0.1%	0.1%	0.1%	0.2%
Other	0.5%	0.6%	0.6%	0.4%	0.5%	0.6%	0.6%
Two or More Races	3.1%	2.7%	2.7%	1.4%	2.2%	4.8%	3.7%

Population 18 and Over (2020 Census)							
	Trustee Area 1	Trustee Area 2	Trustee Area 3	Trustee Area 4	Trustee Area 5	Trustee Area 6	Trustee Area 7
Population	115,226	116,455	114,186	110,794	112,633	121,020	119,176
Hispanic/Latino	48.7%	45.8%	48.1%	77.0%	62.3%	23.1%	44.7%
White	40.5%	31.4%	24.6%	17.3%	15.9%	56.0%	35.1%
Black/ African American	1.9%	5.9%	4.2%	0.5%	8.1%	2.4%	6.4%
American Indian/ Alaska Native	1.3%	0.5%	0.5%	0.3%	0.8%	0.5%	0.9%
Asian	4.0%	13.3%	19.5%	3.0%	10.2%	13.3%	8.8%
Native Hawaiian/ Other Pacific Islander	0.1%	0.1%	0.1%	0.1%	0.1%	0.2%	0.2%
Other	0.5%	0.6%	0.6%	0.4%	0.5%	0.5%	0.6%
Two or More Races	3.1%	2.5%	2.4%	1.4%	2.1%	3.9%	3.3%

Citizens by Voting Age Population Estimate (2015-2019)							
	Trustee Area 1	Trustee Area 2	Trustee Area 3	Trustee Area 4	Trustee Area 5	Trustee Area 6	Trustee Area 7
Population	94,953	96,252	92,120	78,613	82,787	106,163	109,112
Hispanic/Latino	37.9%	40.2%	43.4%	68.5%	54.9%	21.1%	39.5%
White	52.5%	40.0%	31.1%	25.6%	21.5%	64.0%	43.5%
Black/ African American	3.2%	7.3%	4.8%	0.7%	11.5%	2.2%	7.2%
American Indian/ Alaska Native	1.4%	0.3%	0.6%	0.2%	0.8%	0.3%	0.6%
Asian	3.1%	10.7%	18.3%	3.2%	9.8%	10.5%	7.1%
Native Hawaiian/ Other Pacific Islander	0.0%	0.0%	0.1%	0.0%	0.1%	0.1%	0.1%
Other	N/A	N/A	N/A	N/A	N/A	N/A	N/A
Two or More Races	1.8%	1.5%	1.8%	1.7%	1.3%	1.9%	2.0%