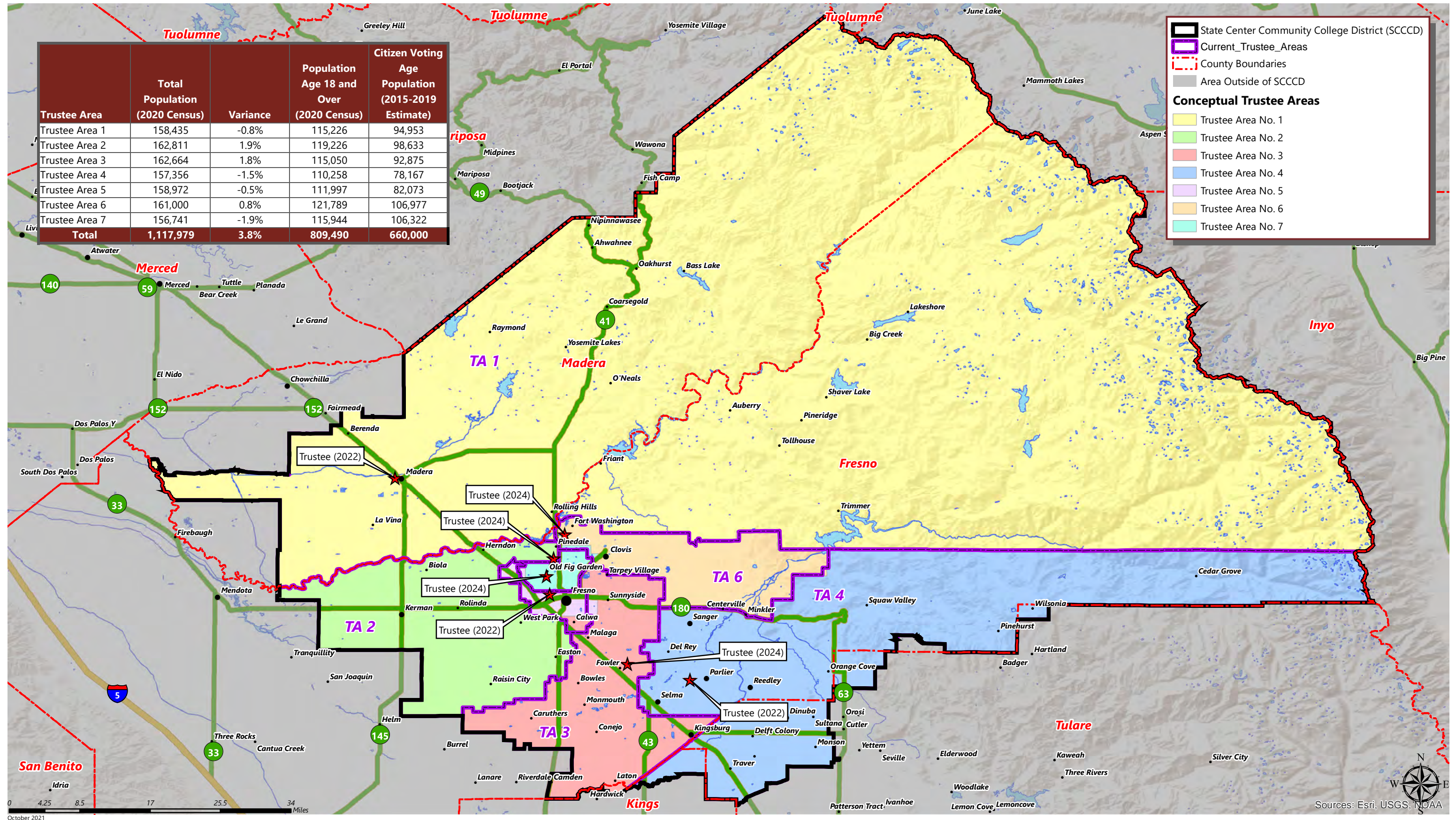
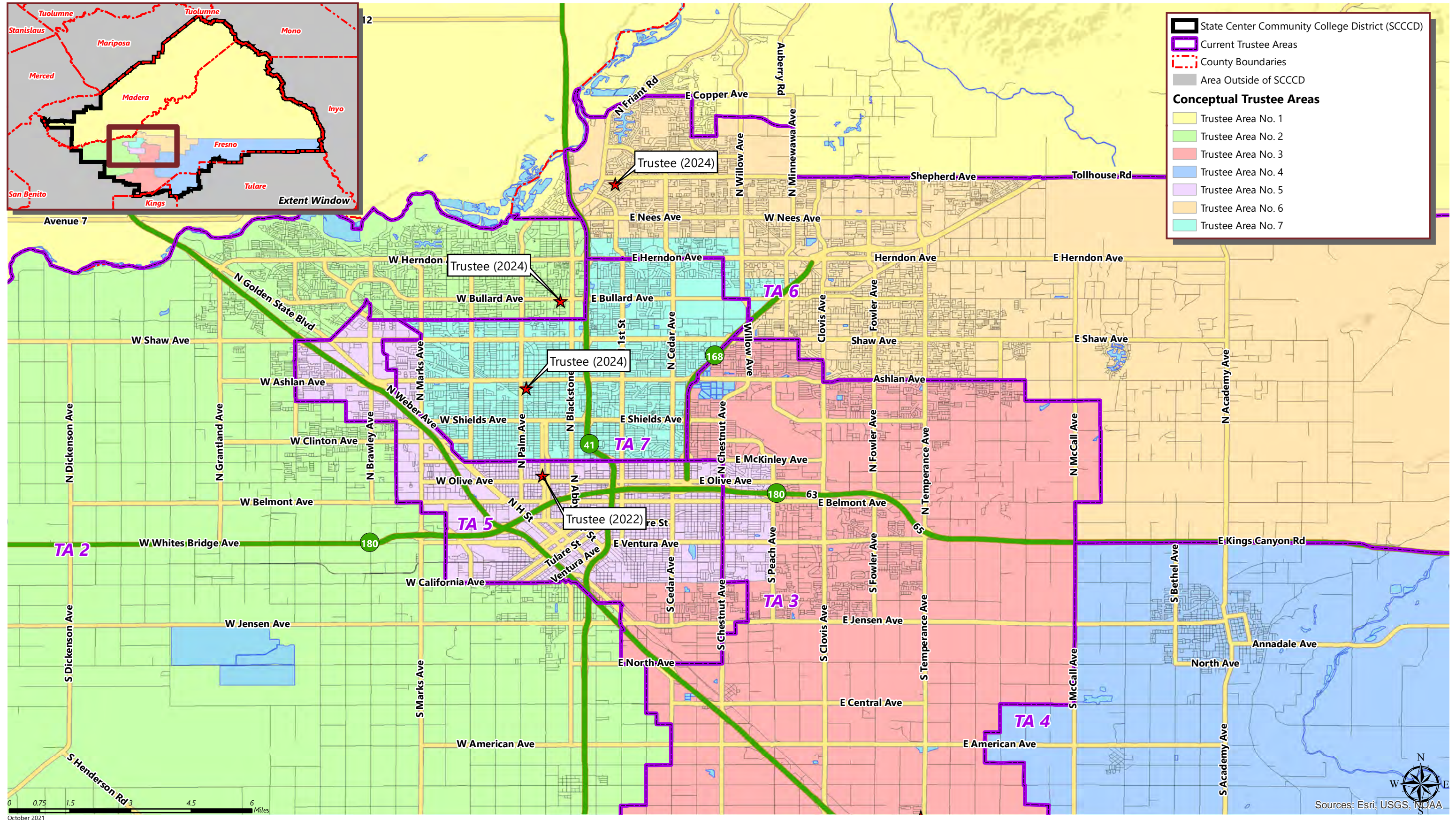


Trustee Area	Total Population (2020 Census)	Variance	Population Age 18 and Over (2020 Census)	Citizen Voting Age Population (2015-2019 Estimate)
Trustee Area 1	158,435	-0.8%	115,226	94,953
Trustee Area 2	162,811	1.9%	119,226	98,633
Trustee Area 3	162,664	1.8%	115,050	92,875
Trustee Area 4	157,356	-1.5%	110,258	78,167
Trustee Area 5	158,972	-0.5%	111,997	82,073
Trustee Area 6	161,000	0.8%	121,789	106,977
Trustee Area 7	156,741	-1.9%	115,944	106,322
Total	1,117,979	3.8%	809,490	660,000



October 2021

Sources: Esri, USGS, NOAA



STATE CENTER COMMUNITY COLLEGE DISTRICT

CONCEPTUAL TRUSTEE AREAS - SCENARIO 1

Total Population:	1,117,979	Ideal Population	159,711	Variance:	3.8%
--------------------------	------------------	-------------------------	----------------	------------------	-------------

Total Population (2020 Census)							
	Trustee Area 1	Trustee Area 2	Trustee Area 3	Trustee Area 4	Trustee Area 5	Trustee Area 6	Trustee Area 7
Population	158,435	162,811	162,664	157,356	158,972	161,000	156,741
Population Variance	-1,276	3,100	2,953	-2,355	-739	1,289	-2,970
	-0.8%	1.9%	1.8%	-1.5%	-0.5%	0.8%	-1.9%
Hispanic/Latino	54.3%	49.9%	50.4%	80.3%	65.6%	26.3%	50.6%
White	35.2%	27.3%	23.2%	14.5%	12.2%	52.4%	28.8%
Black/ African American	1.7%	6.1%	3.5%	0.5%	7.9%	2.4%	7.1%
American Indian/ Alaska Native	1.3%	0.5%	0.6%	0.3%	0.7%	0.5%	0.8%
Asian	3.8%	12.8%	18.7%	2.6%	11.0%	12.9%	8.5%
Native Hawaiian/ Other Pacific Islander	0.1%	0.1%	0.1%	0.1%	0.1%	0.2%	0.2%
Other	0.5%	0.6%	0.6%	0.4%	0.5%	0.6%	0.5%
Two or More Races	3.1%	2.8%	2.9%	1.4%	2.1%	4.8%	3.6%

Population 18 and Over (2020 Census)							
	Trustee Area 1	Trustee Area 2	Trustee Area 3	Trustee Area 4	Trustee Area 5	Trustee Area 6	Trustee Area 7
Population	115,226	119,226	115,050	110,258	111,997	121,789	115,944
Hispanic/Latino	48.7%	45.2%	47.1%	77.1%	62.3%	23.5%	46.2%
White	40.5%	31.5%	26.8%	17.3%	15.0%	55.9%	33.6%
Black/ African American	1.9%	6.1%	3.6%	0.5%	8.0%	2.4%	6.8%
American Indian/ Alaska Native	1.3%	0.5%	0.6%	0.3%	0.8%	0.5%	0.8%
Asian	4.0%	13.4%	18.6%	3.0%	11.2%	13.0%	8.7%
Native Hawaiian/ Other Pacific Islander	0.1%	0.1%	0.1%	0.1%	0.1%	0.2%	0.2%
Other	0.5%	0.6%	0.6%	0.4%	0.5%	0.5%	0.5%
Two or More Races	3.1%	2.5%	2.5%	1.4%	2.0%	3.9%	3.2%

Citizens by Voting Age Population Estimate (2015-2019)							
	Trustee Area 1	Trustee Area 2	Trustee Area 3	Trustee Area 4	Trustee Area 5	Trustee Area 6	Trustee Area 7
Population	94,953	98,633	92,875	78,167	82,073	106,977	106,322
Hispanic/Latino	37.9%	39.7%	43.0%	68.7%	54.1%	21.3%	40.8%
White	52.5%	40.1%	33.6%	25.4%	20.7%	63.8%	42.0%
Black/ African American	3.2%	7.7%	4.1%	0.7%	11.2%	2.2%	7.8%
American Indian/ Alaska Native	1.4%	0.3%	0.5%	0.2%	0.8%	0.3%	0.7%
Asian	3.1%	10.7%	16.8%	3.2%	11.7%	10.4%	6.9%
Native Hawaiian/ Other Pacific Islander	0.0%	0.0%	0.1%	0.0%	0.1%	0.1%	0.0%
Other	N/A	N/A	N/A	N/A	N/A	N/A	N/A
Two or More Races	1.8%	1.5%	1.9%	1.7%	1.4%	1.9%	1.9%