



► **2020 CENSUS AND
REDISTRICTING**

STATE CENTER COMMUNITY
COLLEGE DISTRICT

AUGUST 3, 2021



**COOPERATIVE
STRATEGIES**
ASSESS • PLAN • FUND • BUILD

▶ CENSUS DATA AND REDISTRICTING

- Governing Boards of community college districts are required after every Census to:
 1. Review the population data to determine if their voting areas are still within the allowable variance
 2. Make any necessary adjustments to the areas to ensure population balance within legal requirements
- Typically, the data required is released by March 31 of the year following the Census
- Changes to voting areas need to be filed with the registrars of voters for the counties served by the SCCCD Board of Trustees in advance of the November 2022 election. Counties have indicated a deadline of **February 2022**

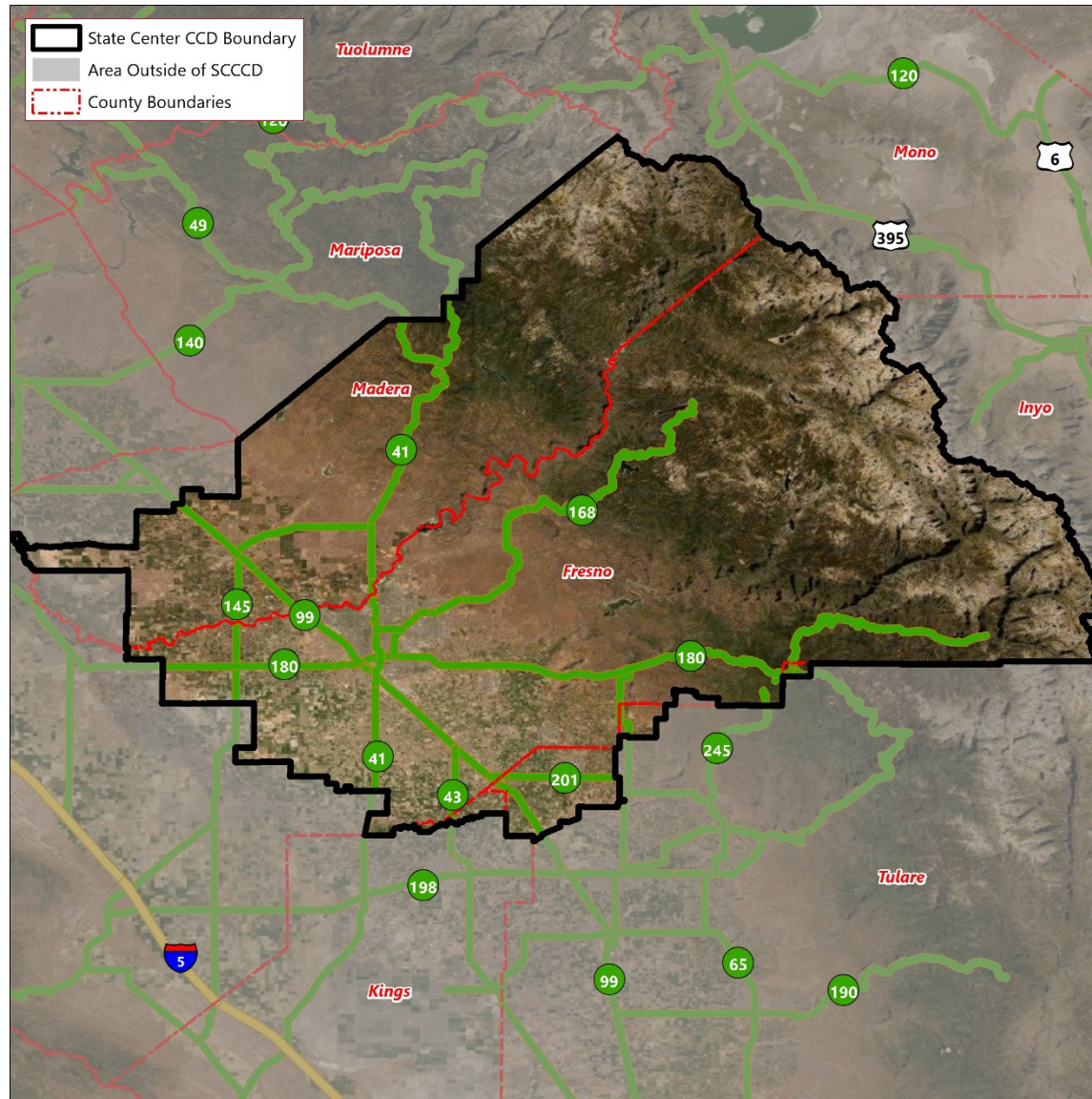


▶ CENSUS DATA AND REDISTRICTING
TIMING OF DATA

- Release of 2020 Census data has been delayed due to the COVID-19 pandemic
- Latest update from Census Bureau indicates 2020 Census data at block level will be released between August 16 and September 30, 2021
- Compresses timeframe for SCCCD and other public agencies who elect by-area to review and adjust their voting areas
- Potential for legislative changes, including changes to primary election date
- No formal process in statute governing the process to adjust trustee areas following each Census

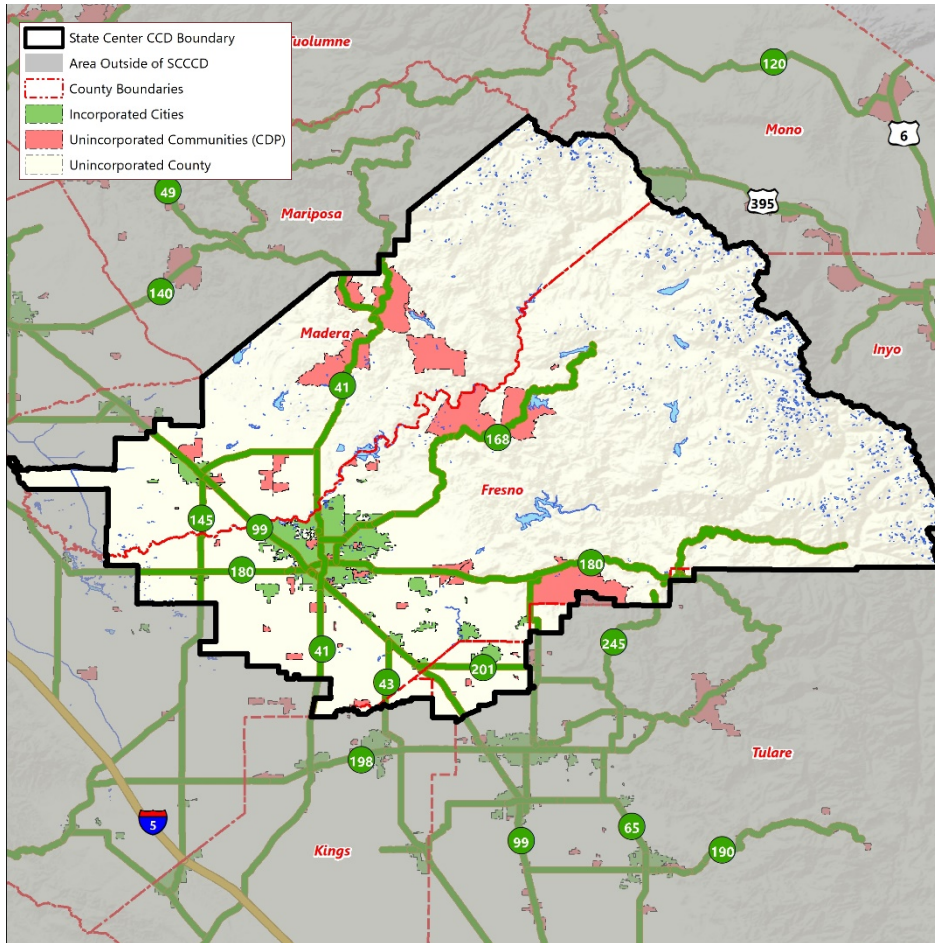


▶ DISTRICT BOUNDARIES



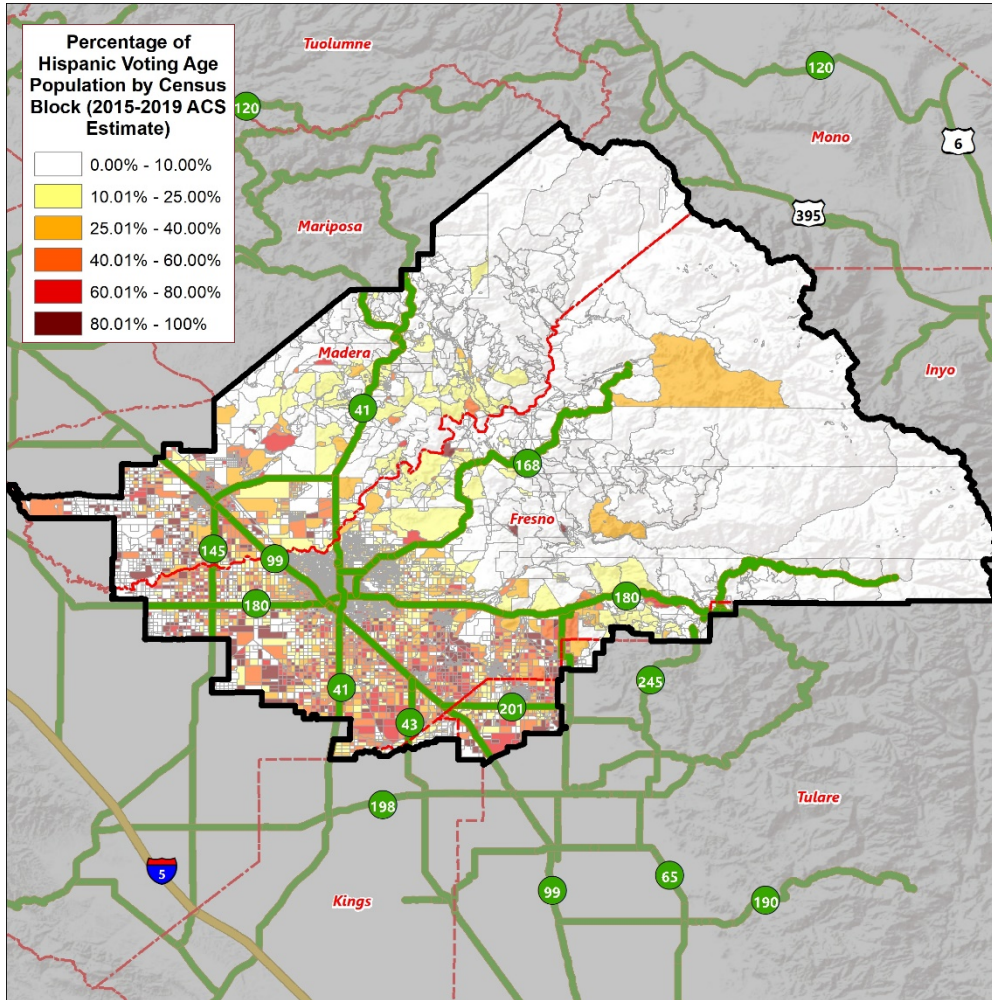
▶ DISTRICT DEMOGRAPHICS

2010 CENSUS DATA



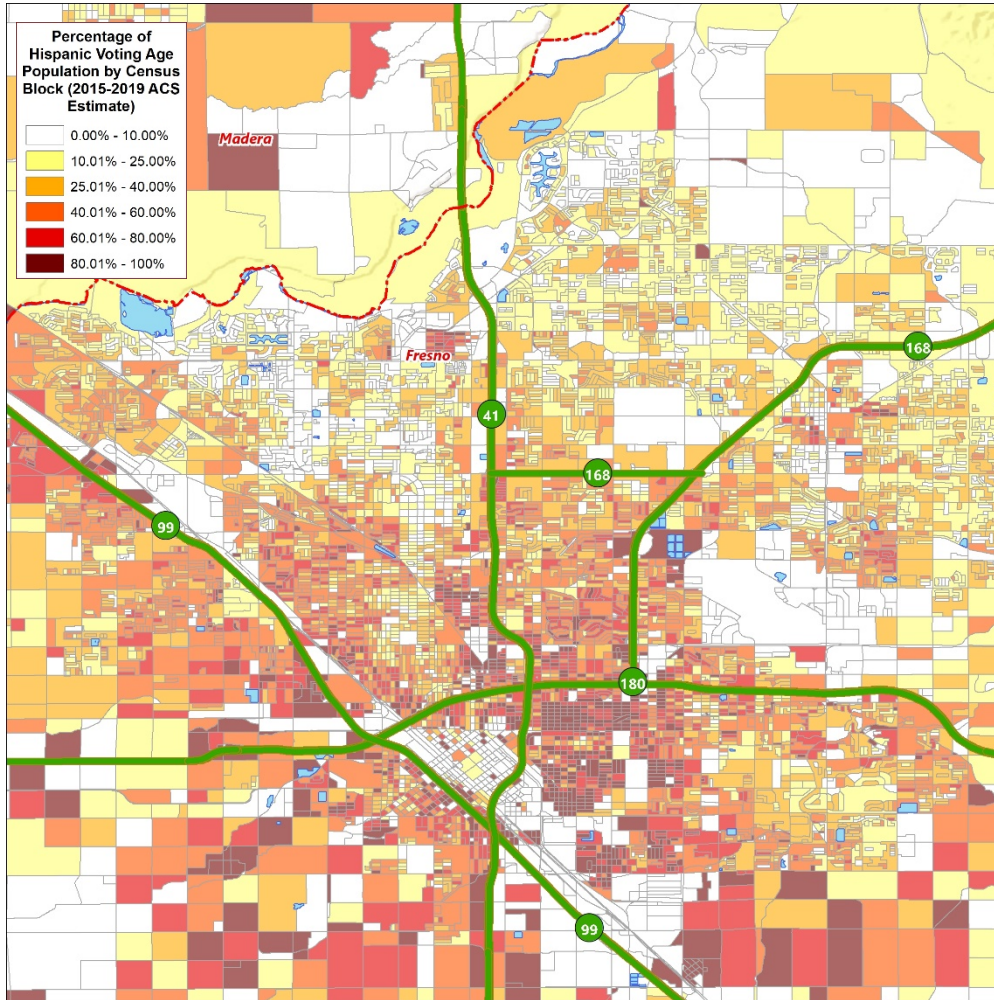
Population	Total Population		Age 18 and over	
	Total	%	Total	%
Hispanic/Latino	516,040	50.20%	324,360	44.99%
White	348,056	33.86%	284,766	39.50%
Black / African American	45,621	4.44%	31,472	4.36%
American Indian / Alaska Native	7,330	0.71%	5,436	0.75%
Asian	88,810	8.64%	61,988	8.60%
Native Hawaiian/ Pacific Islander	1,114	0.11%	846	0.12%
Other	19,095	1.86%	10,927	1.52%
Two or More Races	1,810	0.18%	1,216	0.17%
Total	1,027,876	100.00%	721,011	100.00%

► DISTRICT DEMOGRAPHICS
CITIZEN VOTING AGE POPULATION ESTIMATES



Population	2015-2019 CVAP	
	Total	%
Hispanic/Latino	276,892	42.12%
White	269,561	41.01%
Black / African American	34,107	5.19%
American Indian / Alaska Native	3,982	0.61%
Asian	59,659	9.08%
Native Hawaiian/ Pacific Islander	797	0.12%
Two or More Races	12,316	1.87%
Total	657,314	100.00%

► DISTRICT DEMOGRAPHICS
HISPANIC CITIZEN VOTING AGE POPULATION ESTIMATES



Population	2015-2019 CVAP	
	Total	%
Hispanic/Latino	276,892	42.12%
White	269,561	41.01%
Black / African American	34,107	5.19%
American Indian / Alaska Native	3,982	0.61%
Asian	59,659	9.08%
Native Hawaiian/ Pacific Islander	797	0.12%
Two or More Races	12,316	1.87%
Total	657,314	100.00%

▶ CONSIDERATIONS IN VOTING AREAS



Each area shall contain nearly equal number of inhabitants



Follow man-made and natural geographic features, as much as possible



Drawn to comply with the Federal Voting Rights Act



Respect incumbency, if possible



Compact and contiguous, as much as possible



Other local considerations



Respect communities of interest, as much as possible

► DRAFT TIMELINE

DATE	ACTIVITY
August 3, 2021	Board Meeting: Presentation on Process
September 2021	Cooperative Strategies receives 2020 Census data and evaluates population within each voting area of the Board of Trustees
October 5, 2021	Board Meeting: Presentation on Evaluation of Existing Voting Areas Receive Input on Potential Adjustments
October 6, 2021 – October 25, 2021	Cooperative Strategies prepares potential maps of adjusted Voting Areas
October 26, 2021	Draft Maps Posted to SCCCD Website
November 2, 2021	Board Meeting: Review Initial Scenarios
November 3, 2021 – December 7, 2021	Cooperative Strategies revises scenarios based on Board and Public Input
December 14, 2021	Board Meeting: Review Maps and Conduct Public Hearing
December 2021	Cooperative Strategies revises scenarios based on Board and Public Input
January 2022	Board Meeting: Review Maps and Conduct Public Hearing Board Selection of Map
February 2022 ^[1]	Cooperative Strategies sends Final Trustee Area Map and Descriptions to the County Registrars of Voters and County Boards of Supervisors

[1] Subject to confirmation from the County Registrars of Voters regarding election deadline.



QUESTIONS