



# State Center Vision 2035

---

Commission Workshop 7 / 27 October 2023

# Overview



- **Planning Process**
- **Long Term Goals + Strategies**
- **Facilities Guiding Principles**
- **Districtwide Vision, Values, Mission**
- **Vision 2035 Framework**
- **Next Steps**

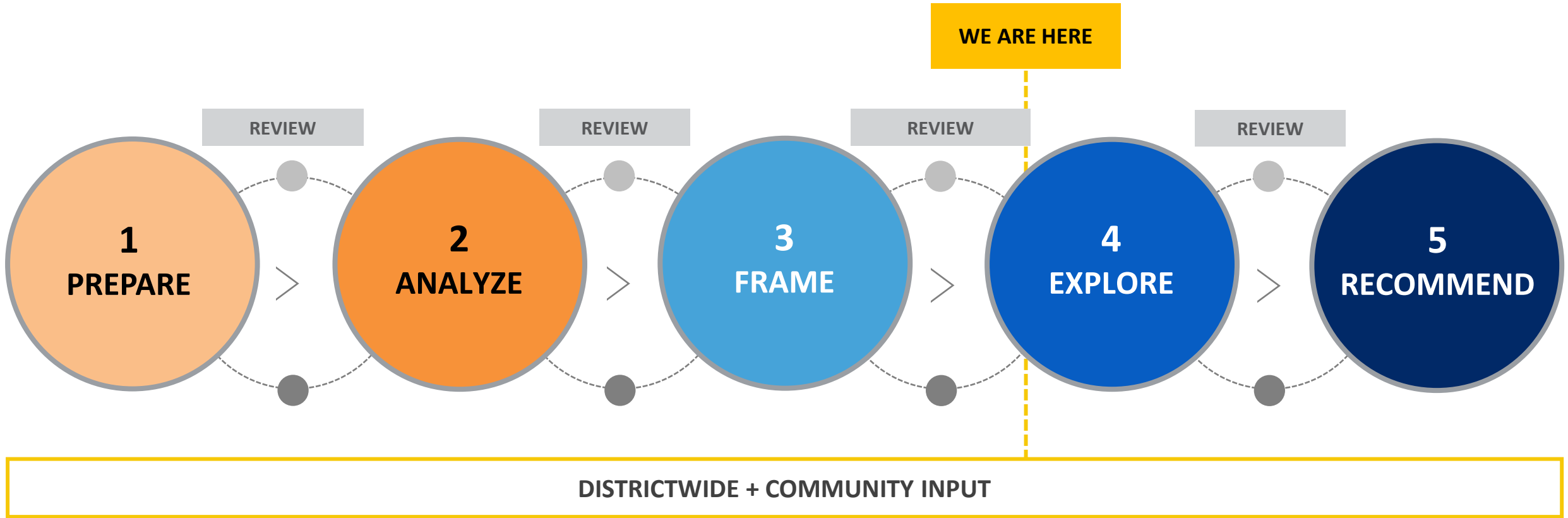


# 1

## Planning Process

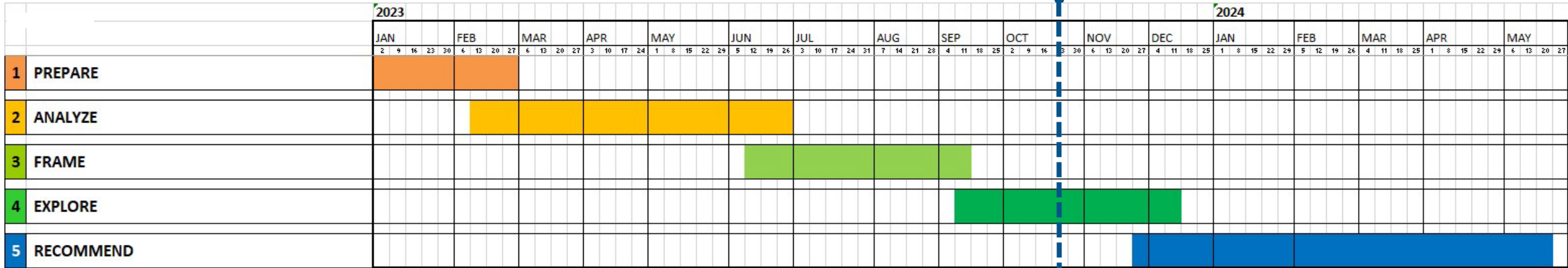
Integrated | Participatory | Data-Informed

# 5-Step Planning Process



I N T E G R A T E D | P A R T I C I P A T O R Y | D A T A - I N F O R M E D

# Timeline



# Districtwide Guided Pathways Meeting

## Vision 2035 Strategies Feedback

For each goal, please add your ideas for additional strategies (put your location as the subject).

### Equitable Student Access

#### Goal:

SCCCD will increase student access to educational opportunities and resources.

#### Districtwide strategies:

- Welcome students to State Center Colleges
- Offer a range of student support
- Help students choose and enter their pathway
- Expand community on campus

☆ Rate

#### FCC

Increase use of OER.

★★★★★ (1) Rate

#### RC

Developing student centered scheduling

★★★★★ (1) Rate

#### CCC

Increasing student activities and cultural celebrations to foster engagement and build campus life. Staff and faculty have been invited to planning workgroups to ensure there is community buy-in.

★★★★★ (1) Rate

#### MCC

Expand pathway teams to include more instructional faculty to support students in classrooms and in major/career specific activities

☆ Rate

PLANNING PROCESS

# College Planning Team Meetings





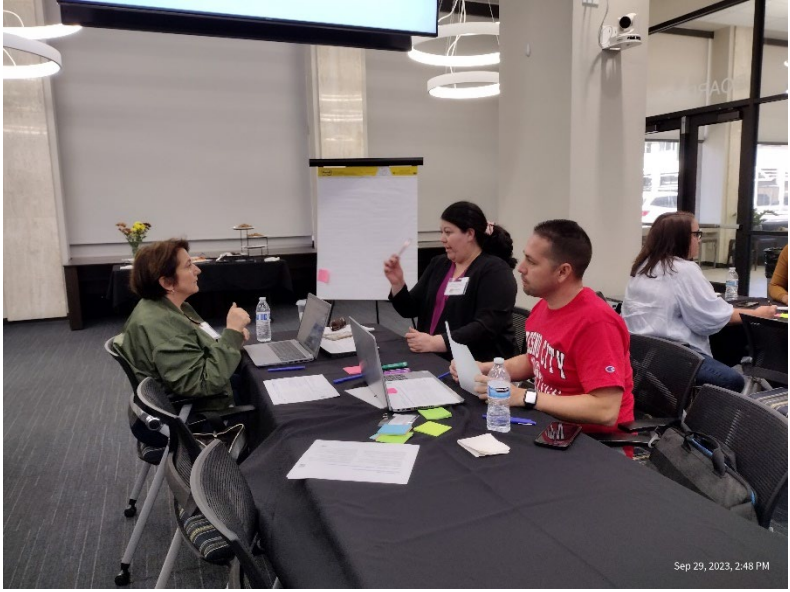
# 2

## Long-Term Goals + Strategies

Where we left off...



# Commission Workshop



# Goal Topics



## PROMISES

**EQUITABLE  
STUDENT ACCESS**

**EQUITABLE  
STUDENT  
ACHIEVEMENT**

**WORKFORCE +  
SOCIAL  
MOBILITY**

**ENROLLMENT  
GROWTH**

**TRUST +  
COLLABORATION**

# Draft Long-Term Goals



SCCCD will increase **student access** to educational opportunities and resources.

SCCCD will prioritize policies and practices that produce **equitable student achievement**.

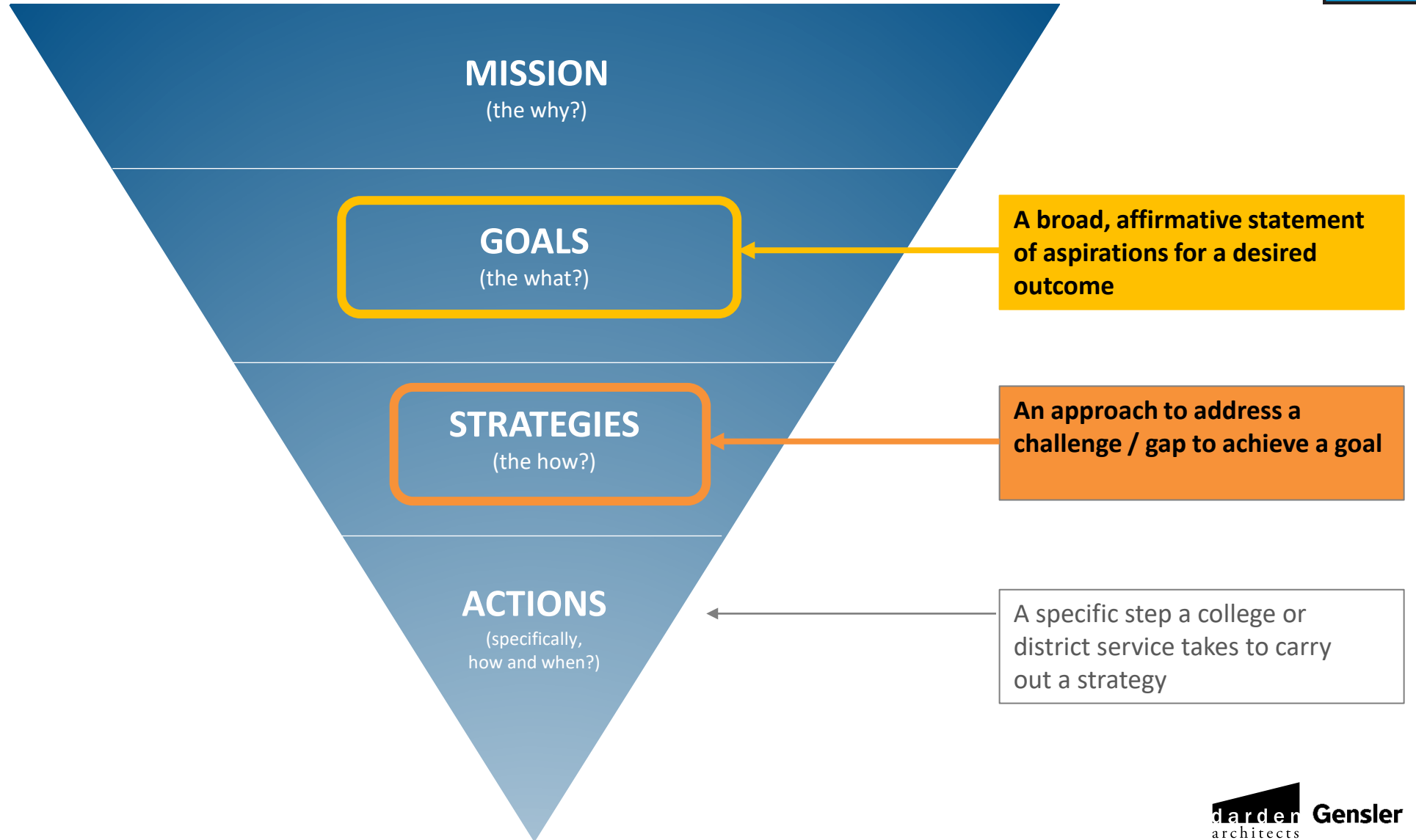
SCCCD will support and sustain students' **economic and social mobility**.

SCCCD will manage and increase enrollment by focusing on:

- growth
- diversification of opportunities
- fiscal soundness

SCCCD will create districtwide **unity, transparency, and accountability**.

# Shared Vocabulary



# Equitable Student Access



**SCCCD will increase student access to educational opportunities and resources.**

## Welcome students to State Center Colleges

- Make all spaces more welcoming
- Enhance cultural knowledge and stimulate compassion through ongoing professional development

## Offer a range of student support

- Expand equitable student access to technological devices and WiFi
- Require students to complete FAFSA applications

## Help students choose and enter their pathway (Guided Pathways Pillar 2)

- Embed instruction on careers in orientations and classes
- Coach students on career choices and opportunities using multiple means of communication

## Expand students' sense of belonging

- Connect with students using their preferred modes of communication
- Prioritize active campus environments to increase student engagement

# Equitable Student Access

*Districtwide Long-Term Goal*



**SCCCD will increase student access to educational opportunities and resources.**

## Welcome students to State Center Colleges

- Make all spaces more welcoming
- Enhance cultural knowledge and stimulate compassion through ongoing professional development

## Offer a range of student support

- Expand equitable student access to technological devices and WiFi
- Require students to complete FAFSA applications

## Help students choose and enter their pathway (Guided Pathways Pillar 2)

- Embed instruction on careers in orientations and classes
- Coach students on career choices and opportunities using multiple means of communication

## Expand students' sense of belonging

- Connect with students using their preferred modes of communication
- Prioritize active campus environments to increase student engagement

# Equitable Student Access

*Districtwide Long-Term Goal*



**SCCCD will increase student access to educational opportunities and resources.**

## Welcome students to State Center Colleges

- Make all spaces more welcoming
- Enhance cultural knowledge and stimulate compassion through ongoing professional development

## Offer a range of student support

- Expand equitable student access to technological devices and WiFi
- Require students to complete FAFSA applications

## Help students choose and enter their pathway (Guided Pathways Pillar 2)

- Embed instruction on careers in orientations and classes
- Coach students on career choices and opportunities using multiple means of communication

*Districtwide Strategy*

## Expand students' sense of belonging

- Connect with students using their preferred modes of communication
- Prioritize active campus environments to increase student engagement

# Equitable Student Access

*Districtwide Long-Term Goal*



**SCCCD will increase student access to educational opportunities and resources.**

## Welcome students to State Center Colleges

- Make all spaces more welcoming
- Enhance cultural knowledge and stimulate compassion through ongoing professional development

## Offer a range of student support

- Expand equitable student access to technological devices and WiFi
- Require students to complete FAFSA applications

*Example Actions*

## Help students choose and enter their pathway (Guided Pathways Pillar 2)

- Embed instruction on careers in orientations and classes
- Coach students on career choices and opportunities using multiple means of communication

*Districtwide Strategy*

## Expand students' sense of belonging

- Connect with students using their preferred modes of communication
- Prioritize active campus environments to increase student engagement



# Activity



- 1. Review the District Long-term Goal + Strategies + Example Actions***
- 2. Does this provide a useful framework for planning at your College or District Service? If yes, place a dot***
- 3. If you would like to suggest revisions, attach a post-it***





# 3

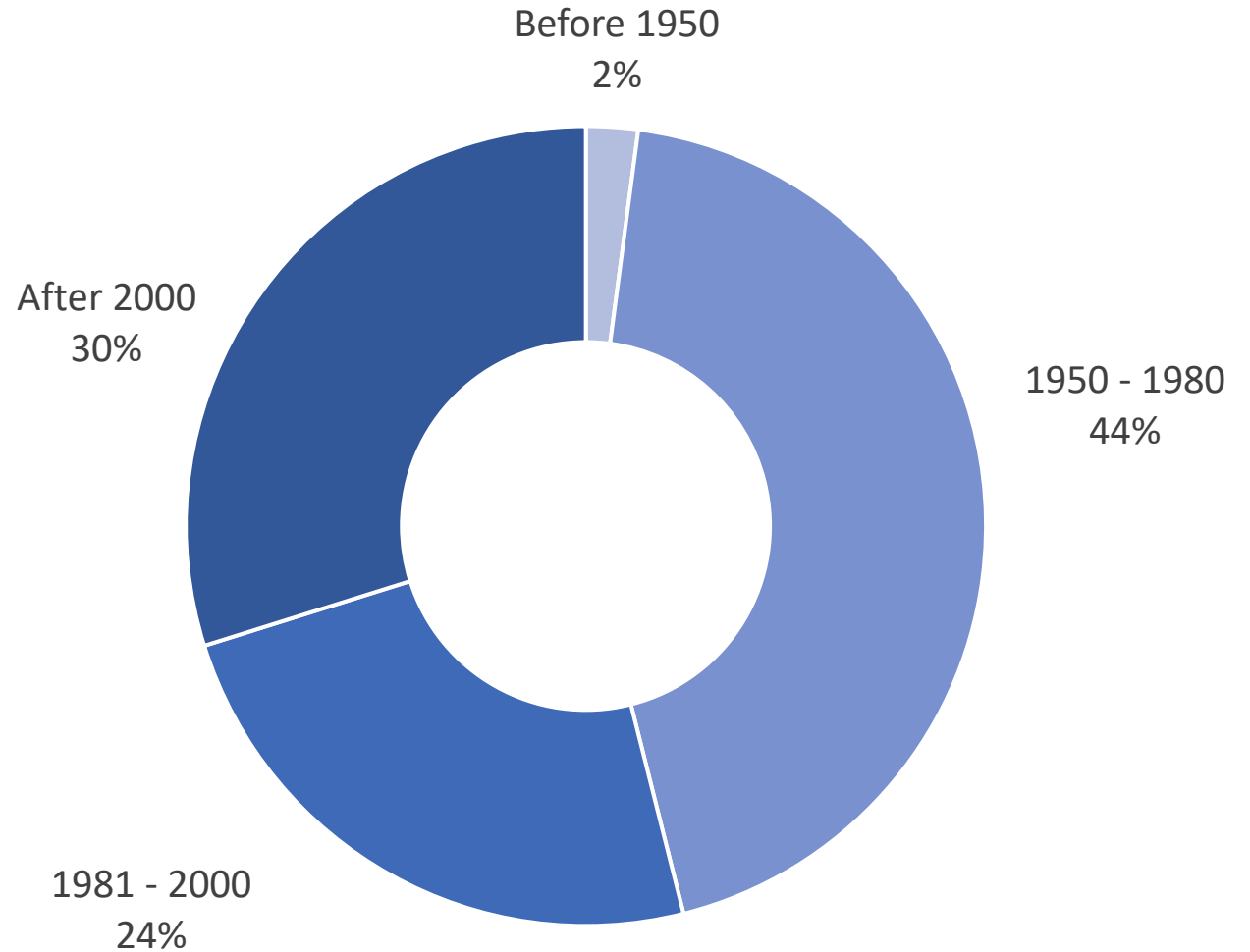
## Facilities Guiding Principles

---

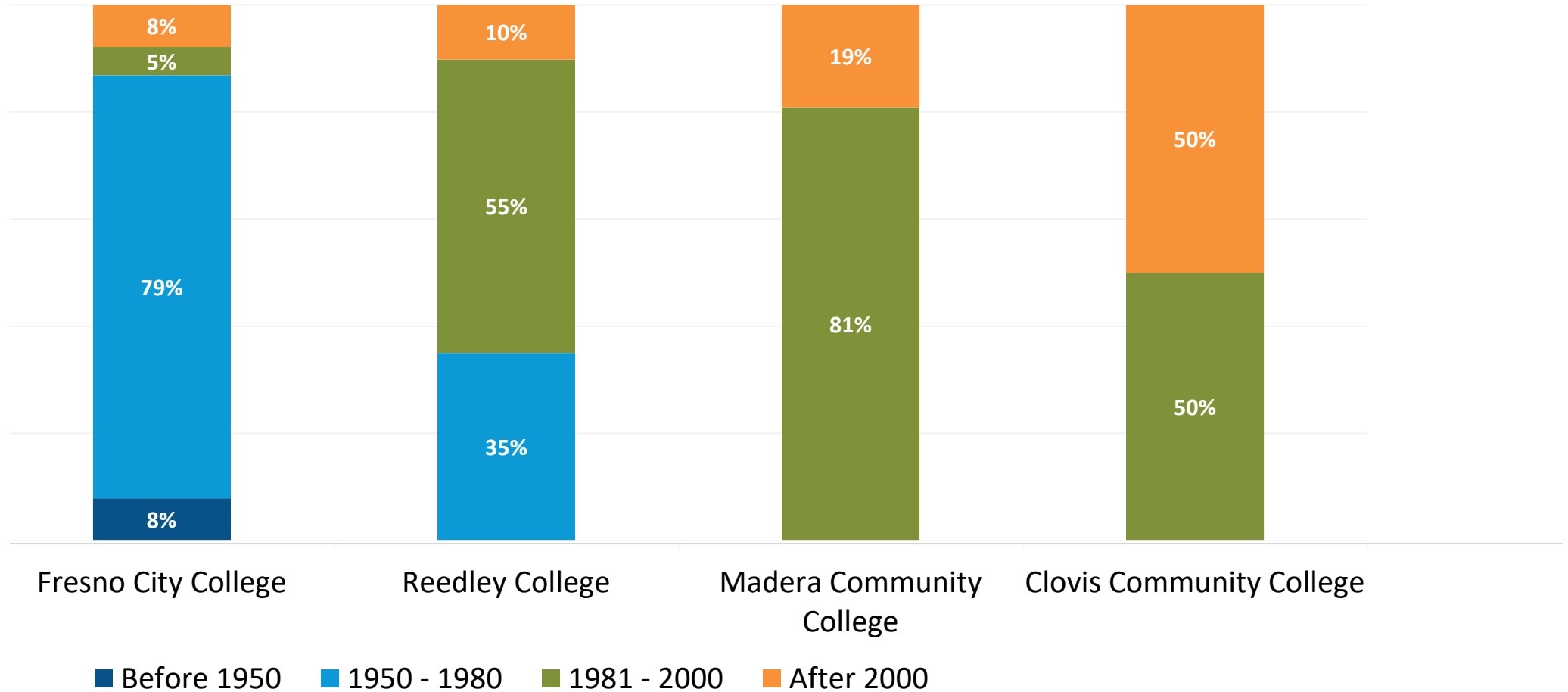
Completing the Vision 2035 Framework

# Districtwide Facilities Age

Nearly half of the buildings in the District were constructed in or before 1980.



# Districtwide Facilities Age

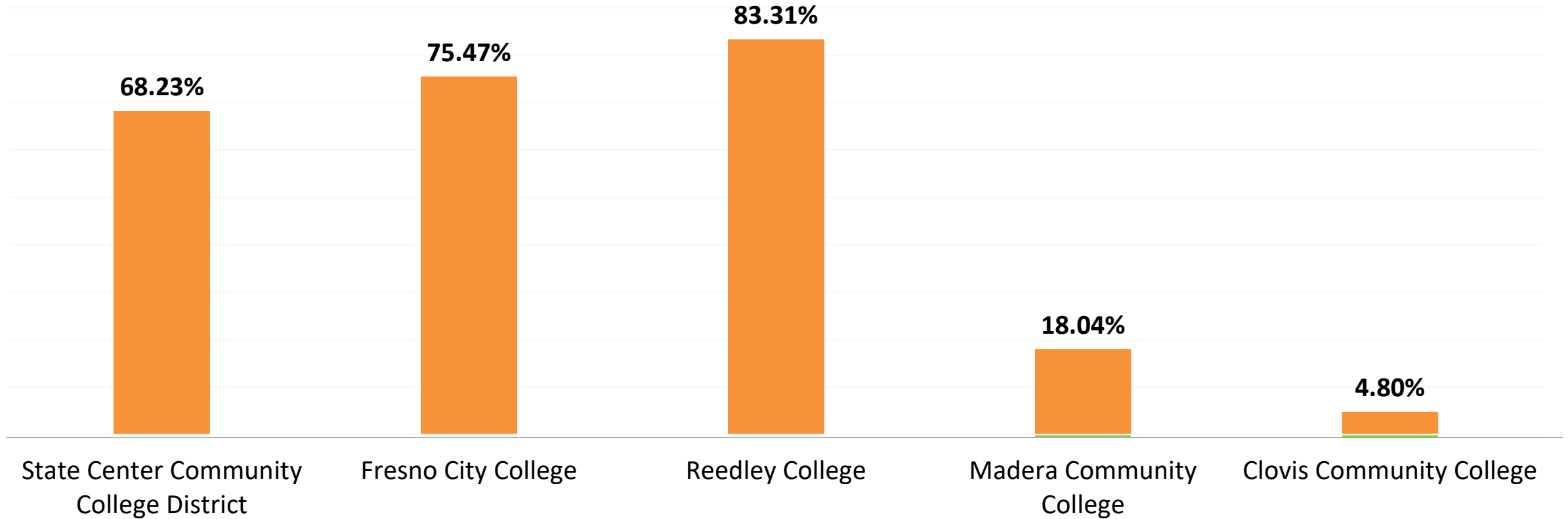


# Facility Condition Index

The FCI score for a building represents the ratio of the cost to renovate versus the cost to replace.  
Low FCI = good condition  
High FCI = needs attention



SCCCD FCI Scores



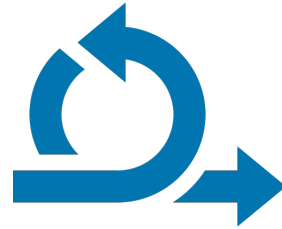
# Draft Facilities Guiding Principles



WELCOMING



STUDENT CENTERED



AGILE



COLLEGIATE IDENTITY



RESOURCEFUL

# Draft Facilities Guiding Principles



**WELCOMING**

## ***CREATE WELCOMING AND INVITING CAMPUSES***

- *Develop a gateway arrival experience at each campus*
- *Create a 'welcome center' at each campus*
- *Improve navigation + wayfinding*
- *Design campuses to enhance a sense of belonging*
- *Prioritize spaces for collaboration + connections*

# Draft Facilities Guiding Principles



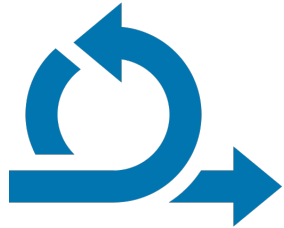
**STUDENT  
CENTERED**

## ***DESIGN CAMPUSES FROM THE STUDENT PERSPECTIVE***

- *Support the needs of all students*
- *Consolidate related student support services*
- *Align campus organization to support career pathways*
- *Prioritize spaces for students to socialize, study, and collaborate (indoor + outdoor)*



# Draft Facilities Guiding Principles



**AGILE**

## ***DEVELOP AGILE + RESPONSIVE CAMPUSES***

- *Develop flexible spaces to prepare for change*
- *Maximize utilization + limit single-use space*
- *Develop indoor and outdoor spaces for multiple uses*
- *Repurpose underperforming and underutilized facilities*
- *Position State Center to maximize state + local funding*

# Draft Facilities Guiding Principles



## COLLEGIATE IDENTITY

### *ENHANCE STATE CENTER COLLEGES' COLLEGIATE IDENTITY*

- *Increase visibility of the Colleges across the District*
- *Develop site and facilities to keep students on campus*
- *Develop spaces to encourage student and faculty interactions*
- *Prioritize and feature Libraries/LRCs*
- *Improve campus edges within surrounding neighborhoods*

# Draft Facilities Guiding Principles



## RESOURCEFUL

### *OPTIMIZE PHYSICAL RESOURCES ACROSS THE DISTRICT*

- *Align facilities + land use to support long-term goals*
- *Repurpose/replace/remove inefficient facilities*
- *Right size facilities to address program needs*
- *Create a culture of sustainability*
- *Leverage external funding + partnerships*

# Draft Facilities Guiding Principles



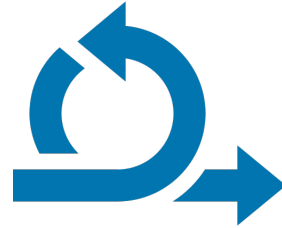
## WELCOMING

Create  
**welcoming**  
and inviting  
campuses



## STUDENT CENTERED

Design campuses  
from the  
**student**  
**perspective**



## AGILE

Develop **agile**  
and responsive  
campuses



## COLLEGIATE IDENTITY

Enhance State  
Center Colleges'  
**collegiate**  
**identity**



## RESOURCEFUL

Optimize  
**physical**  
**resources**  
across the  
District

# Activity



- 1. Review the Draft Facilities Guiding Principles***
- 2. Does this provide a useful framework for facilities planning at your College?  
If yes, place a dot***
- 3. If you would like to suggest revisions, attach a post-it***





# 4

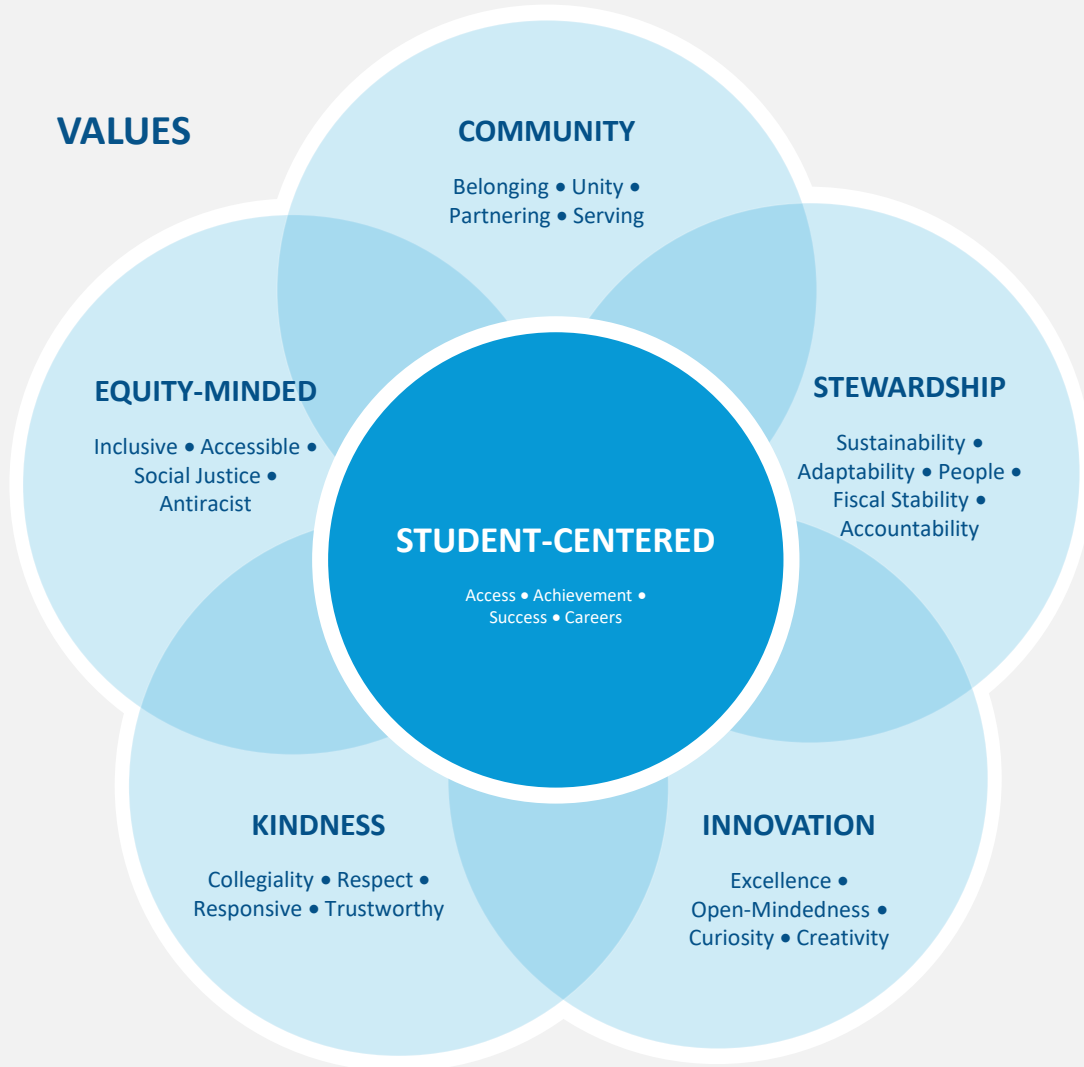
## Districtwide Vision, Values, Mission

Final Framework

# Final Drafts



## VALUES



## MISSION

***Advancing equitable student access and achievement is at the heart of our work at State Center Community College District.***

*We – the faculty, classified professionals, administrators, and Trustees at our four colleges, off-campus sites, and District Office – are united by this commitment.*

*In collaboration across the District and with our community partners, we serve the diverse Central Valley and strengthen our vibrant economy. We efficiently deliver a comprehensive array of postsecondary educational programs and support services to meet a range of student needs and student goals, including associate and baccalaureate degrees, transfer, employment-ready certificates, and lifelong learning.*

*Together, we create innovative, inclusive, and antiracist teaching and learning environments at each of our four colleges – Fresno City College, Reedley College, Clovis Community College, and Madera Community College – that are welcoming, accessible, and student-centered, designed to bolster our students’ social and economic mobility locally, regionally, and globally.*

# Final Draft Mission



***Advancing equitable student access and achievement is at the heart of our work at State Center Community College District.***

*We – the faculty, classified professionals, administrators, and Trustees at our four colleges, off-campus sites, and District Office – are united by this commitment.*

*In collaboration across the District and with our community partners, we serve the diverse Central Valley and strengthen our vibrant economy. We efficiently deliver a comprehensive array of postsecondary educational programs and support services to meet a range of student needs and student goals, including associate and baccalaureate degrees, transfer, employment-ready certificates, and lifelong learning.*

*Together, we create innovative, inclusive, and antiracist teaching and learning environments at each of our four colleges – Fresno City College, Reedley College, Clovis Community College, and Madera Community College – that are welcoming, accessible, and student-centered, designed to bolster our students’ social and economic mobility locally, regionally, and globally.*



# Final Draft Mission + Vision



## VISION

***Advancing equitable student access and achievement is at the heart of our work at State Center Community College District.***

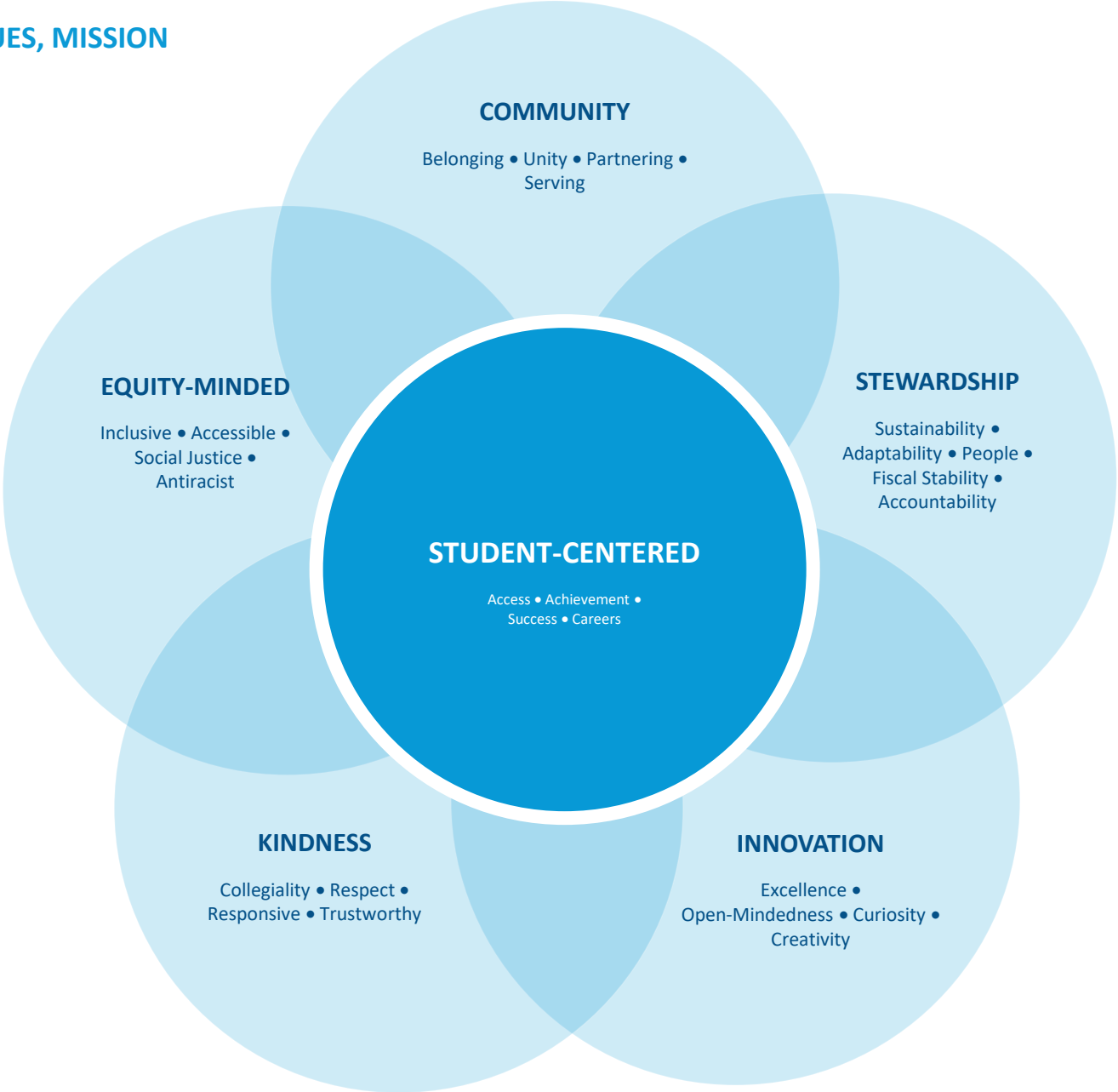
## MISSION

*We – the faculty, classified professionals, administrators, and Trustees at our four colleges, off-campus sites, and District Office – are united by this vision.*

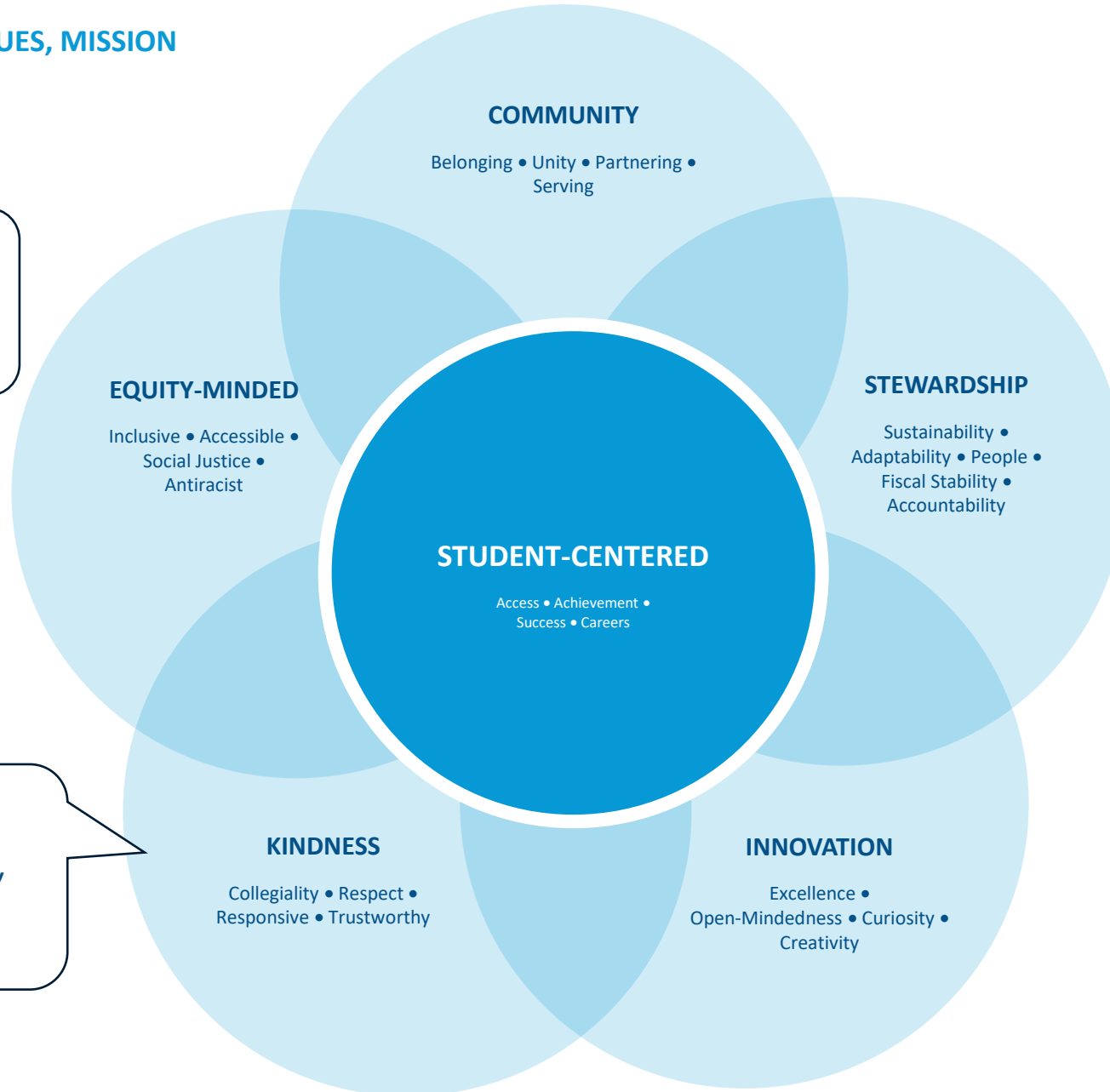
*In collaboration across the District and with our community partners, we serve the diverse Central Valley and strengthen our vibrant economy. We efficiently deliver a comprehensive array of postsecondary educational programs and support services to meet a range of student needs and student goals, including associate and baccalaureate degrees, transfer, employment-ready certificates, and lifelong learning.*

*Together, we create innovative, inclusive, and antiracist teaching and learning environments at each of our four colleges – Fresno City College, Reedley College, Clovis Community College, and Madera Community College – that are welcoming, accessible, and student-centered, designed to bolster our students' social and economic mobility locally, regionally, and globally.*

# Draft Values



# Draft Values

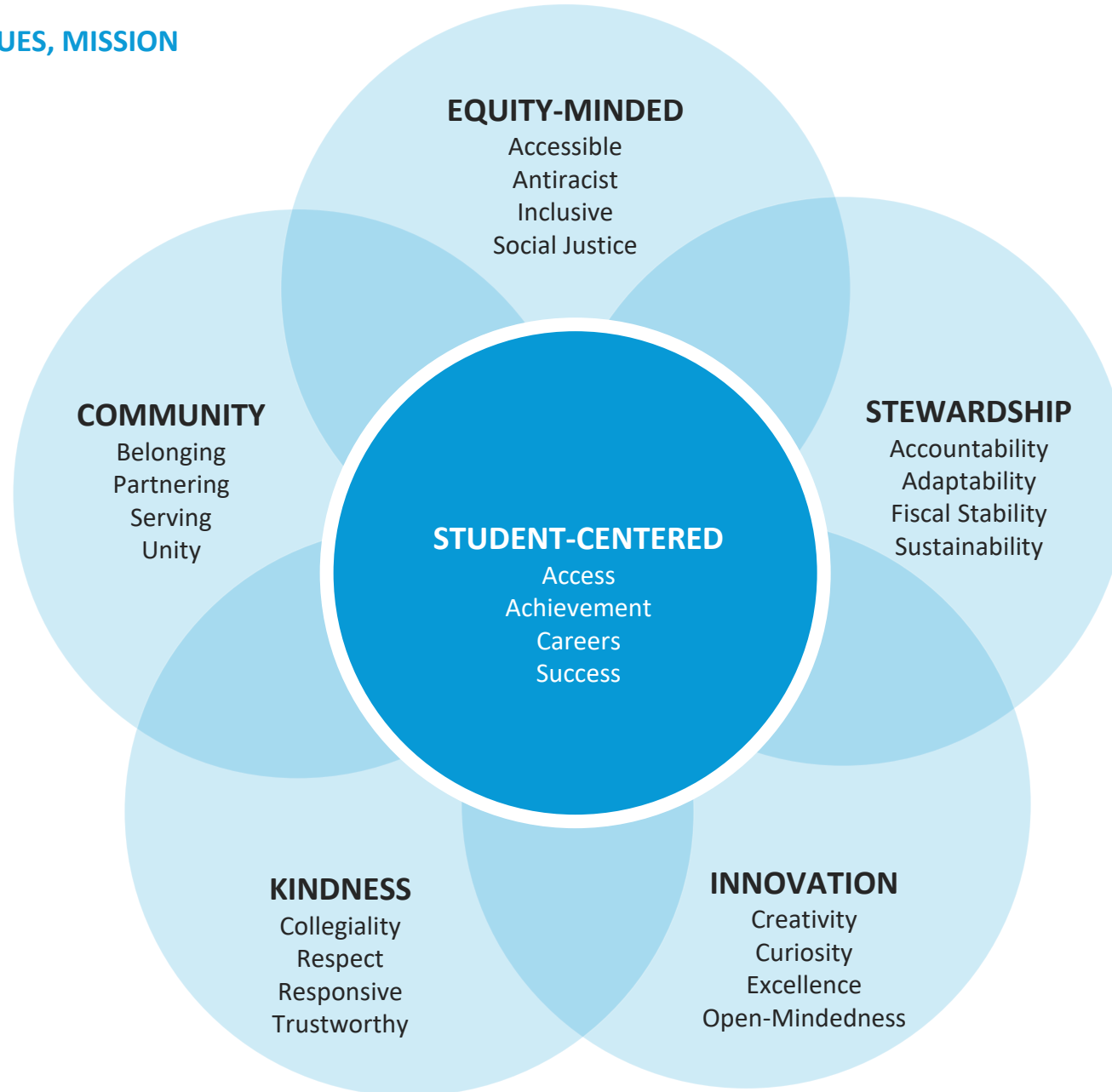


*Alphabetize words under main headings*

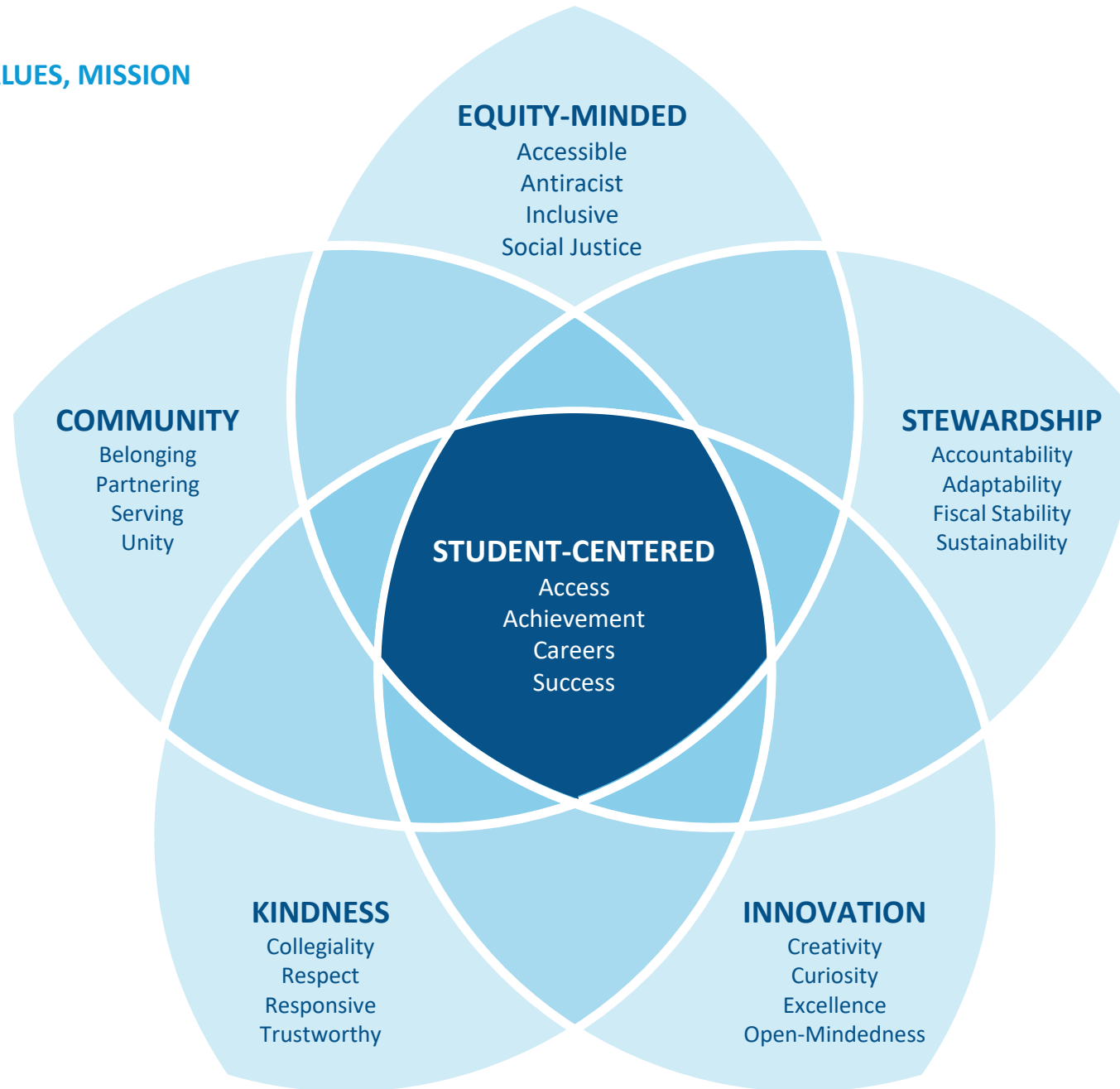
*Revise graphic to improve legibility and accessibility*

*Remove "people"*

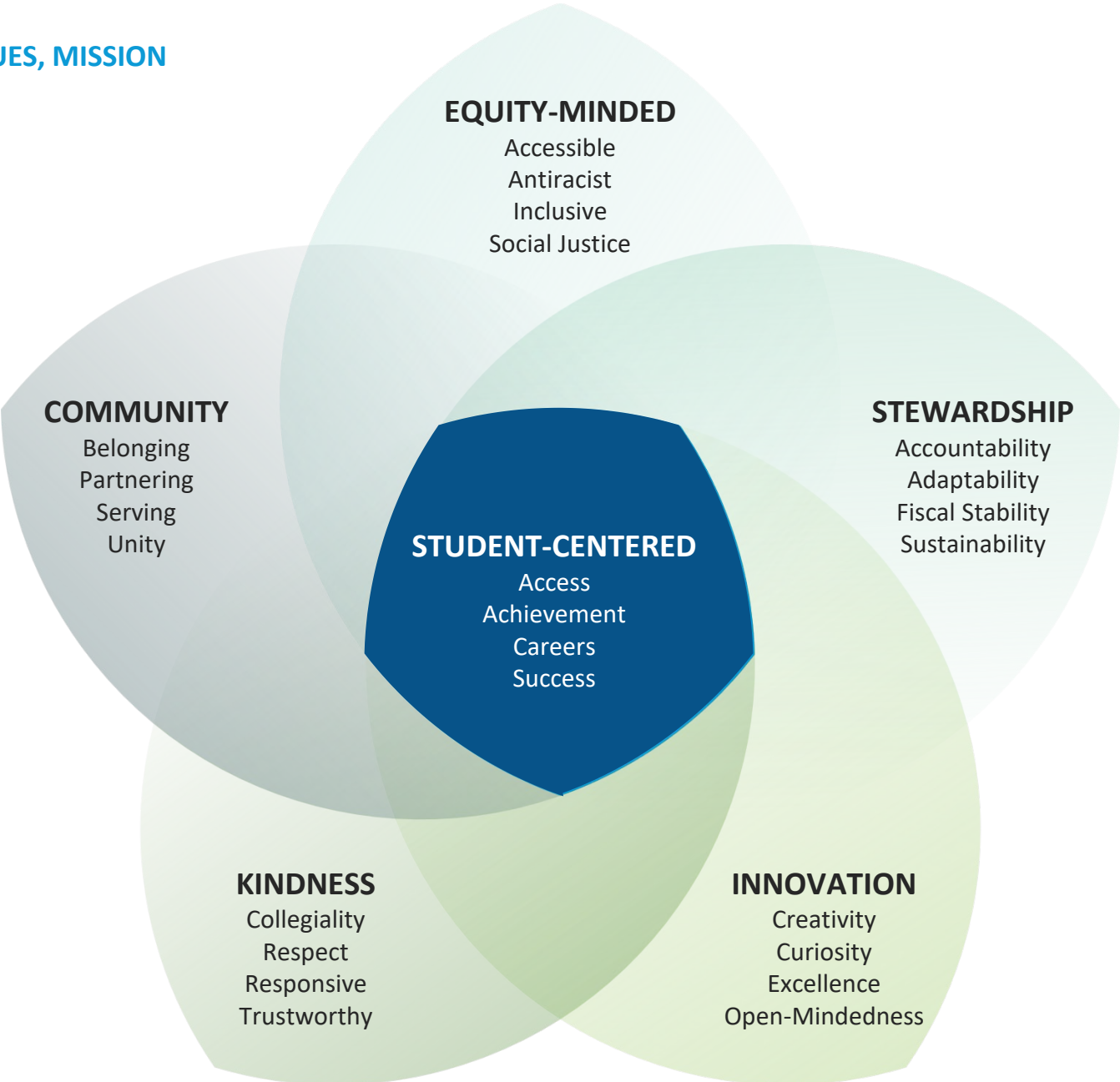
# Graphic A



# Graphic B



# Graphic C





# 5

## Vision 2035 Framework

Long-term Goals + Facilities Guiding Principles

# Framework



Qualitative

Quantitative





# Draft Long-Term Goals



SCCCD will increase **student access** to educational opportunities and resources.

SCCCD will prioritize policies and practices that produce **equitable student achievement**.

SCCCD will support and sustain students' **economic and social mobility**.

SCCCD will manage and increase enrollment by focusing on:

- growth
- diversification of opportunities
- fiscal soundness

SCCCD will create districtwide **unity, transparency, and accountability**.

# Draft Facilities Guiding Principles



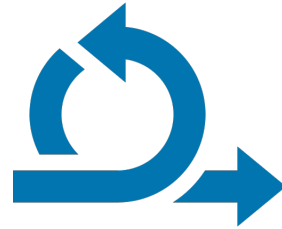
## WELCOMING

Create  
**welcoming**  
and inviting  
campuses



## STUDENT CENTERED

Design campuses  
from the  
**student**  
**perspective**



## AGILE

Develop **agile**  
and responsive  
campuses



## COLLEGIATE IDENTITY

Enhance State  
Center Colleges'  
**collegiate**  
**identity**



## RESOURCEFUL

Optimize  
**physical**  
**resources**  
across the  
District



# 6

## Next Steps

FACILITIES – Preliminary Concepts for State Center College

