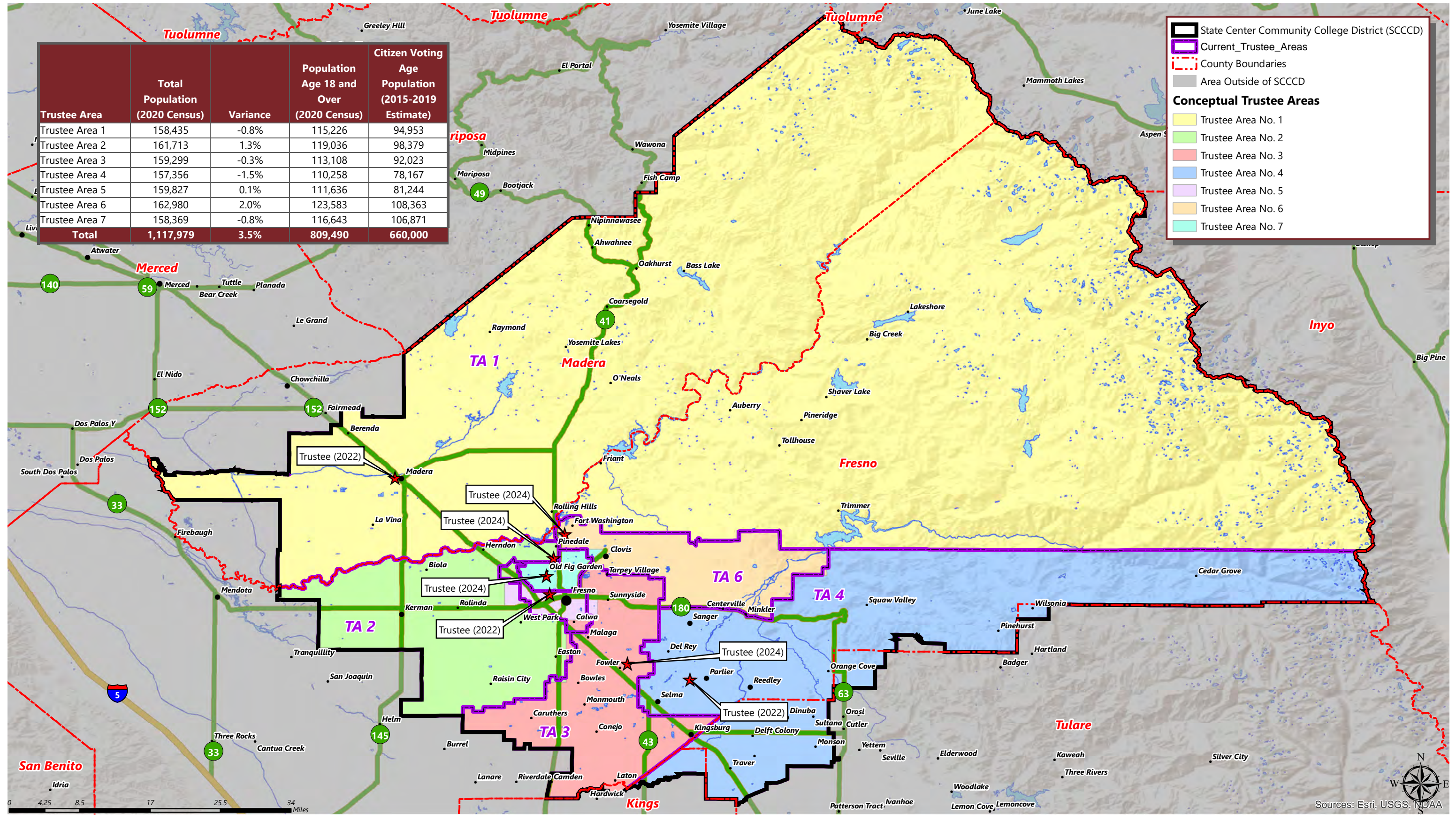
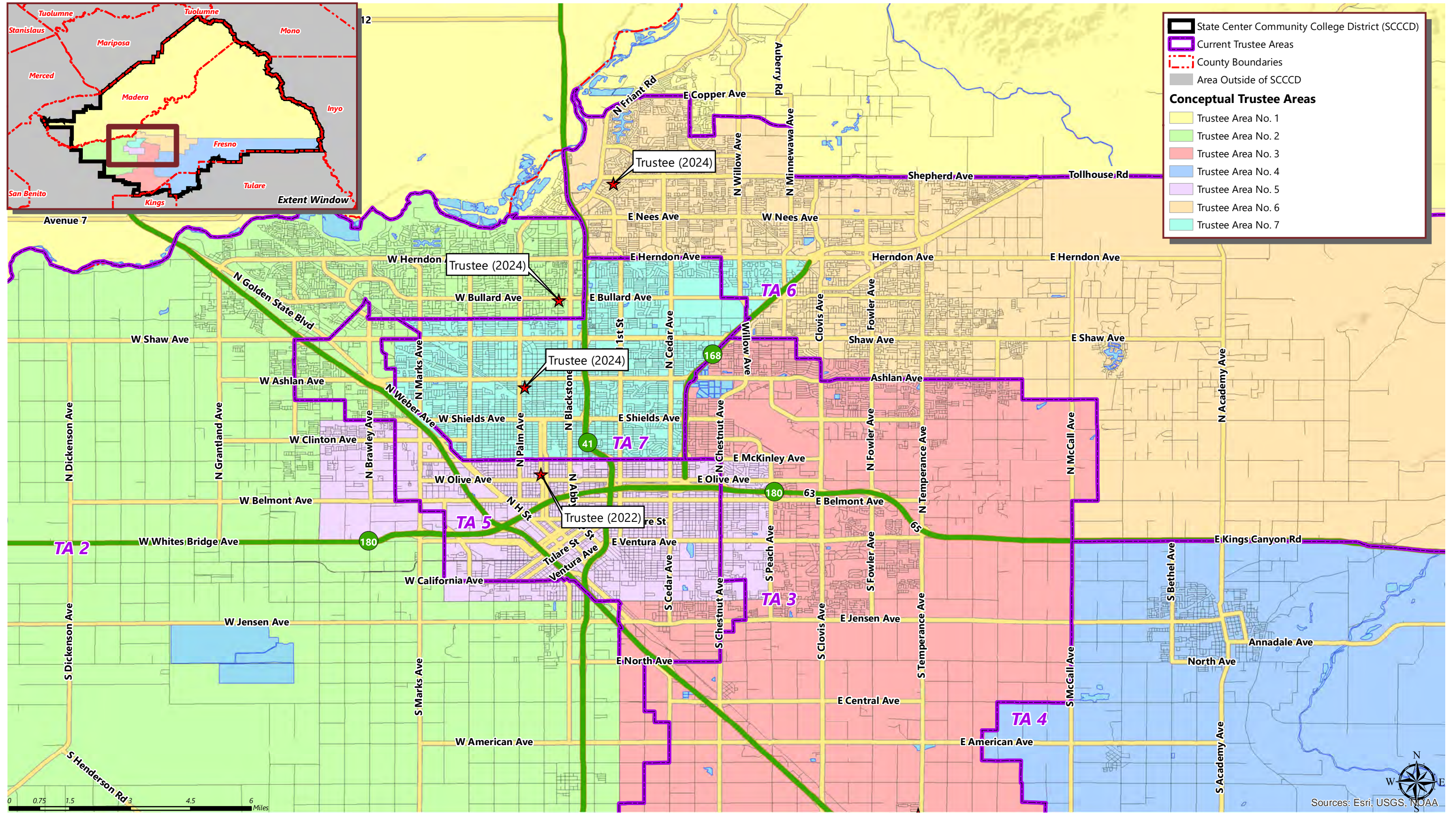


Trustee Area	Total Population (2020 Census)	Variance	Population Age 18 and Over (2020 Census)	Citizen Voting Age Population (2015-2019 Estimate)
Trustee Area 1	158,435	-0.8%	115,226	94,953
Trustee Area 2	161,713	1.3%	119,036	98,379
Trustee Area 3	159,299	-0.3%	113,108	92,023
Trustee Area 4	157,356	-1.5%	110,258	78,167
Trustee Area 5	159,827	0.1%	111,636	81,244
Trustee Area 6	162,980	2.0%	123,583	108,363
Trustee Area 7	158,369	-0.8%	116,643	106,871
Total	1,117,979	3.5%	809,490	660,000



October 2021

Sources: Esri, USGS, NOAA



STATE CENTER COMMUNITY COLLEGE DISTRICT

CONCEPTUAL TRUSTEE AREAS - SCENARIO 2

Total Population:	1,117,979	Ideal Population:	159,711	Variance:	3.5%
--------------------------	------------------	--------------------------	----------------	------------------	-------------

Total Population (2020 Census)							
	Trustee Area 1	Trustee Area 2	Trustee Area 3	Trustee Area 4	Trustee Area 5	Trustee Area 6	Trustee Area 7
Population	158,435	161,713	159,299	157,356	159,827	162,980	158,369
Population Variance	-1,276	2,002	-412	-2,355	116	3,269	-1,342
	-0.8%	1.3%	-0.3%	-1.5%	0.1%	2.0%	-0.8%
Hispanic/Latino	54.3%	48.9%	49.6%	80.3%	66.8%	26.1%	51.5%
White	35.2%	28.4%	24.4%	14.5%	10.6%	52.5%	27.8%
Black/ African American	1.7%	5.9%	3.2%	0.5%	8.0%	2.5%	7.3%
American Indian/ Alaska Native	1.3%	0.5%	0.6%	0.3%	0.7%	0.5%	0.8%
Asian	3.8%	12.7%	18.5%	2.6%	11.5%	12.9%	8.4%
Native Hawaiian/ Other Pacific Islander	0.1%	0.1%	0.1%	0.1%	0.1%	0.2%	0.2%
Other	0.5%	0.6%	0.6%	0.4%	0.5%	0.6%	0.5%
Two or More Races	3.1%	2.9%	2.9%	1.4%	1.9%	4.8%	3.5%

Population 18 and Over (2020 Census)							
	Trustee Area 1	Trustee Area 2	Trustee Area 3	Trustee Area 4	Trustee Area 5	Trustee Area 6	Trustee Area 7
Population	115,226	119,036	113,108	110,258	111,636	123,583	116,643
Hispanic/Latino	48.7%	44.3%	46.3%	77.1%	63.7%	23.3%	47.1%
White	40.5%	32.6%	28.0%	17.3%	13.1%	56.0%	32.6%
Black/ African American	1.9%	5.9%	3.4%	0.5%	8.3%	2.5%	7.1%
American Indian/ Alaska Native	1.3%	0.5%	0.6%	0.3%	0.8%	0.5%	0.8%
Asian	4.0%	13.4%	18.4%	3.0%	11.7%	13.0%	8.5%
Native Hawaiian/ Other Pacific Islander	0.1%	0.2%	0.1%	0.1%	0.1%	0.2%	0.2%
Other	0.5%	0.6%	0.6%	0.4%	0.5%	0.5%	0.5%
Two or More Races	3.1%	2.6%	2.6%	1.4%	1.8%	3.9%	3.1%

Citizens by Voting Age Population Estimate (2015-2019)							
	Trustee Area 1	Trustee Area 2	Trustee Area 3	Trustee Area 4	Trustee Area 5	Trustee Area 6	Trustee Area 7
Population	94,953	98,379	92,023	78,167	81,244	108,363	106,871
Hispanic/Latino	37.9%	38.4%	42.2%	68.7%	56.5%	21.2%	41.3%
White	52.5%	41.6%	34.8%	25.4%	18.1%	64.1%	40.7%
Black/ African American	3.2%	7.5%	3.9%	0.7%	10.8%	2.3%	8.2%
American Indian/ Alaska Native	1.4%	0.3%	0.6%	0.2%	0.7%	0.3%	0.7%
Asian	3.1%	10.7%	16.5%	3.2%	12.2%	10.2%	7.1%
Native Hawaiian/ Other Pacific Islander	0.0%	0.0%	0.1%	0.0%	0.1%	0.1%	0.0%
Other	N/A	N/A	N/A	N/A	N/A	N/A	N/A
Two or More Races	1.8%	1.5%	1.9%	1.7%	1.5%	1.9%	1.9%