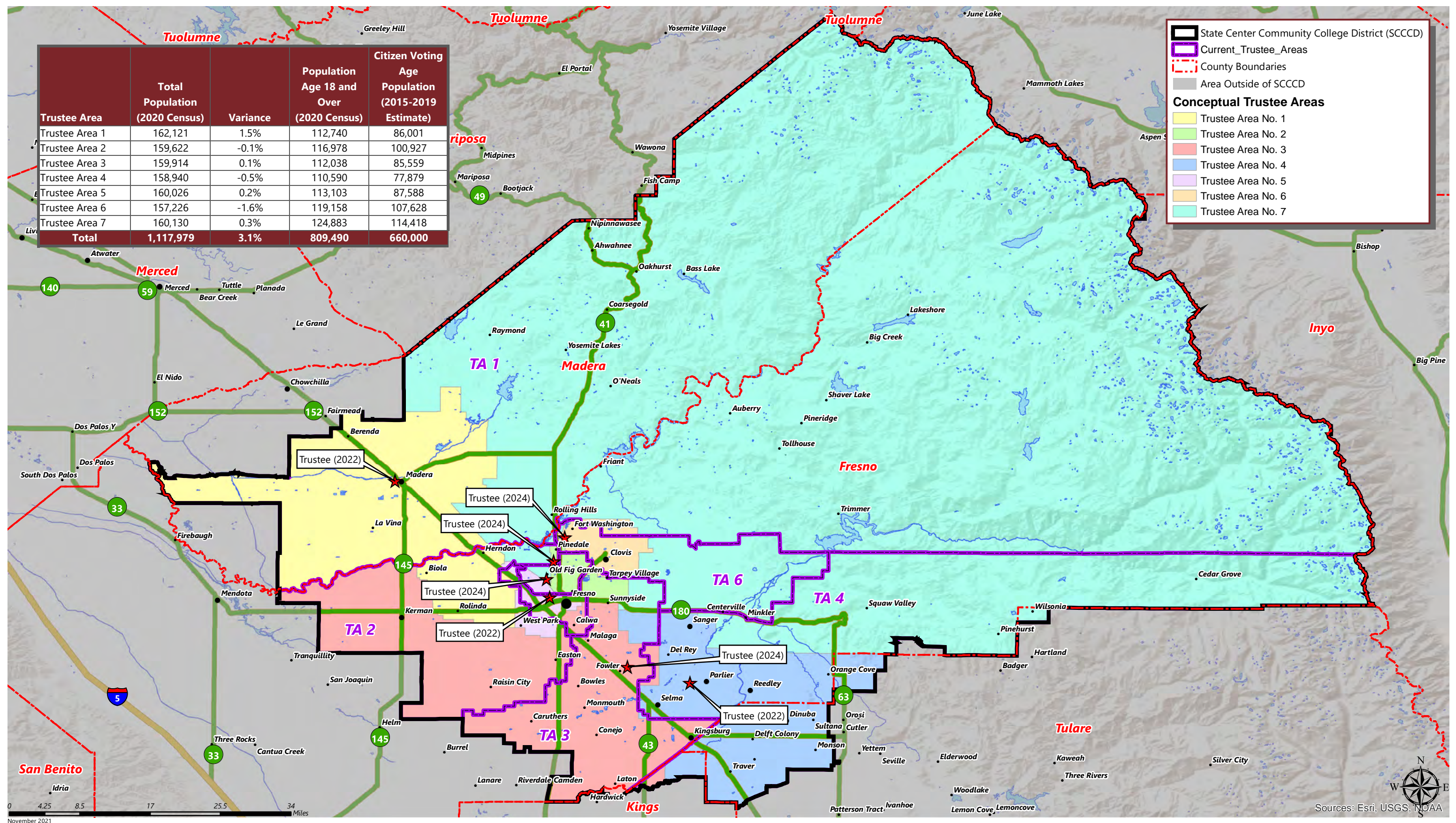


STATE CENTER COMMUNITY COLLEGE DISTRICT

CONCEPTUAL TRUSTEE AREAS - SCENARIO 5 (FROM PUBLIC)

Trustee Area	Total Population (2020 Census)	Variance	Population Age 18 and Over (2020 Census)	Citizen Voting Age Population (2015-2019 Estimate)
Trustee Area 1	162,121	1.5%	112,740	86,001
Trustee Area 2	159,622	-0.1%	116,978	100,927
Trustee Area 3	159,914	0.1%	112,038	85,559
Trustee Area 4	158,940	-0.5%	110,590	77,879
Trustee Area 5	160,026	0.2%	113,103	87,588
Trustee Area 6	157,226	-1.6%	119,158	107,628
Trustee Area 7	160,130	0.3%	124,883	114,418
Total	1,117,979	3.1%	809,490	660,000

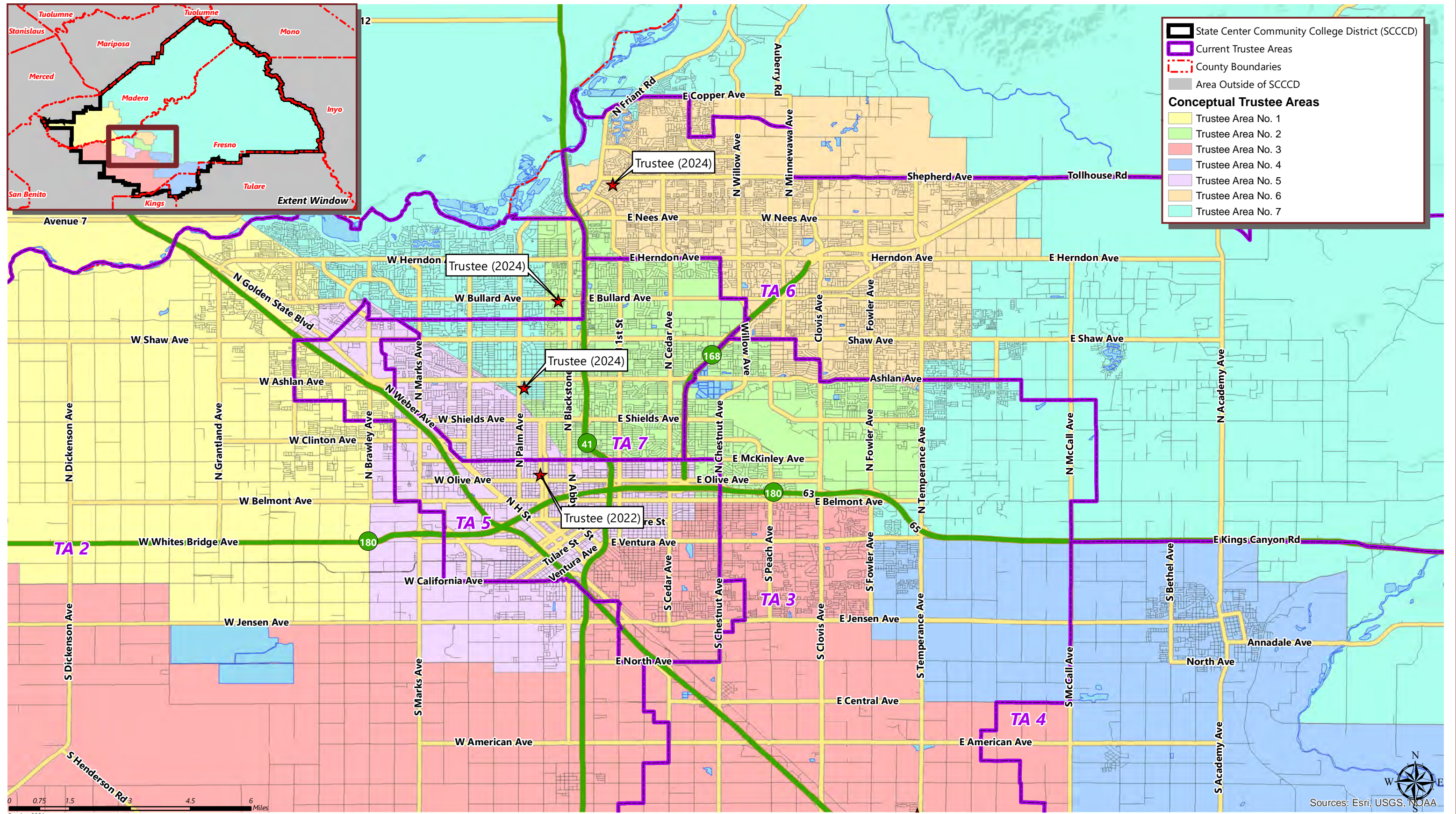


November 2021

Sources: Esri, USGS, NOAA

STATE CENTER COMMUNITY COLLEGE DISTRICT

CONCEPTUAL TRUSTEE AREAS - SCENARIO 5 (FROM PUBLIC)



STATE CENTER COMMUNITY COLLEGE DISTRICT

CONCEPTUAL TRUSTEE AREAS - SCENARIO 5 (FROM PUBLIC)

Total Population:	1,117,979	Ideal Population:	159,711	Variance:	3.1%
--------------------------	------------------	--------------------------	----------------	------------------	-------------

Total Population (2020 Census)							
	Trustee Area 1	Trustee Area 2	Trustee Area 3	Trustee Area 4	Trustee Area 5	Trustee Area 6	Trustee Area 7
Population	162,121	159,622	159,914	158,940	160,026	157,226	160,130
Population Variance	2,410	-89	203	-771	315	-2,485	419
	1.5%	-0.1%	0.1%	-0.5%	0.2%	-1.6%	0.3%
Hispanic/Latino	66.4%	50.5%	64.0%	80.5%	62.3%	26.9%	25.5%
White	16.6%	25.3%	16.0%	12.6%	15.8%	51.5%	56.4%
Black/ African American	4.1%	6.2%	3.4%	0.6%	9.8%	2.5%	2.5%
American Indian/ Alaska Native	0.6%	0.8%	0.4%	0.2%	0.8%	0.5%	1.3%
Asian	9.7%	13.1%	13.7%	4.1%	8.2%	13.0%	8.8%
Native Hawaiian/ Other Pacific Islander	0.1%	0.2%	0.1%	0.1%	0.1%	0.2%	0.1%
Other	0.5%	0.5%	0.5%	0.4%	0.5%	0.6%	0.6%
Two or More Races	2.0%	3.4%	1.8%	1.3%	2.5%	4.8%	4.7%

Population 18 and Over (2020 Census)							
	Trustee Area 1	Trustee Area 2	Trustee Area 3	Trustee Area 4	Trustee Area 5	Trustee Area 6	Trustee Area 7
Population	112,740	116,978	112,038	110,590	113,103	119,158	124,883
Hispanic/Latino	62.2%	46.8%	60.7%	77.7%	58.2%	24.0%	22.3%
White	19.7%	29.5%	19.1%	15.1%	19.3%	55.1%	60.6%
Black/ African American	4.3%	6.2%	3.5%	0.6%	9.9%	2.6%	2.5%
American Indian/ Alaska Native	0.6%	0.8%	0.5%	0.2%	0.8%	0.5%	1.2%
Asian	10.6%	13.0%	13.9%	4.5%	8.6%	13.1%	8.6%
Native Hawaiian/ Other Pacific Islander	0.1%	0.2%	0.1%	0.1%	0.1%	0.2%	0.1%
Other	0.5%	0.5%	0.5%	0.4%	0.6%	0.5%	0.6%
Two or More Races	2.0%	3.1%	1.7%	1.4%	2.4%	4.0%	4.1%

Citizens by Voting Age Population Estimate (2015-2019)							
	Trustee Area 1	Trustee Area 2	Trustee Area 3	Trustee Area 4	Trustee Area 5	Trustee Area 6	Trustee Area 7
Population	86,001	100,927	85,559	77,879	87,588	107,628	114,418
Hispanic/Latino	53.2%	41.9%	51.9%	69.5%	51.4%	22.2%	20.9%
White	30.0%	37.5%	27.1%	23.2%	25.4%	62.2%	66.6%
Black/ African American	6.5%	6.9%	4.4%	0.9%	13.6%	2.9%	2.4%
American Indian/ Alaska Native	0.4%	0.7%	0.5%	0.2%	0.7%	0.3%	1.3%
Asian	8.1%	11.1%	14.5%	4.5%	7.3%	10.2%	7.1%
Native Hawaiian/ Other Pacific Islander	0.0%	0.1%	0.1%	0.1%	0.1%	0.2%	0.0%
Other	N/A	N/A	N/A	N/A	N/A	N/A	N/A
Two or More Races	1.7%	1.9%	1.5%	1.7%	1.6%	2.1%	1.7%