

AGENDA
Regular Meeting
BOARD OF TRUSTEES
STATE CENTER COMMUNITY COLLEGE DISTRICT
1525 E. Weldon
Fresno, California 93704
4:00 p.m., May 2, 2000

- I. Call to Order
- II. Introduction of Guests
- III. Approval of Minutes, Meeting of April 4, 2000
- IV. Delegations, Petitions, and Communications [see footnote, page 3]
 - A. Special Recognition, Fresno City College Student, Nicolas Bruque Dan Larios
- V. Reports of Chancellor and Staff
 - A. PRESENTATIONS
 - 1. Chancellor's Report Judith Redwine
 - 2. Reports by Fresno City College Academic Senate, Classified Senate, and Associated Students Paula Castagna
Cheryl Sullivan
Marylee McGough
Adrian Rodriguez
Meg Todd
Doug Crutchfield
 - 3. Campus Reports Dan Larios, FCC
Tom Crow, RC
Don Yeager, NC
 - 4. Public/Legislative Relations Update Mark Aydelotte
 - B. CONSIDERATION OF CONSENT AGENDA [00-98 through 00-109]
 - C. PERSONNEL
 - 1. Public Hearing on Board's Response to Initial Bargaining Proposals by the California School Employees Association, Local 379 [00-110] Hank Padden

C. PERSONNEL (continued)

- | | | |
|---|----------|-------------|
| 2. Consideration to Approve New Management Position, Dean of Instruction and Student Services, North Centers (Clovis) | [00-111] | Hank Padden |
|---|----------|-------------|

D. GENERAL

- | | | |
|---|----------|-------------------------------|
| 3. Consideration of Quarterly Financial Status Report | [00-112] | Jon Sharpe |
| 4. Consideration of Bids, Miscellaneous Concrete Improvements, Reedley College and Fresno City College | [00-113] | Jon Sharpe |
| 5. Consideration of Bids, Relocatable Addition, Vocational Training Center | [00-114] | Jon Sharpe |
| 6. Consideration of Bids, Relocatable Addition, Reedley College | [00-115] | Jon Sharpe |
| 7. Consideration of Bids, Forestry Building Remodel, Reedley College | [00-116] | Jon Sharpe |
| 8. Consideration of Bids, Selection of Web Site Designer, Districtwide | [00-117] | Jon Sharpe/
Mark Aydelotte |
| 9. Consideration of Resolution Certifying California Environmental Quality Act Compliance for Madera Center Project | [00-118] | Jon Sharpe |
| 10. Consideration to Approve Assessment of Liquidated Damages and Restroom Renovation, Reedley College | [00-119] | Jon Sharpe |

VI. Reports of Board Members

VII. Old Business

VIII. Future Agenda Items

IX. Closed Session

- A. CONFERENCE WITH LABOR NEGOTIATOR [SCFT and CSEA], Hank Padden, Pursuant to Government Code Section 54957.6
- B. PUBLIC EMPLOYEE DISCIPLINE/DISMISSAL/RELEASE, Pursuant to Government Code Section 54957
- C. PUBLIC EMPLOYMENT: Consideration to Appoint Administrator, Special Assignment, Pursuant to Government Code Section 54957
- D. CONFERENCE WITH REAL PROPERTY NEGOTIATOR, (Potential Site Selection), Pursuant to Government Code Section 54956.8

X. Open Session (if any)

- A. Public Employee Discipline/Dismissal/Release [00-120] Hank Padden

XI. Adjournment

The Board chairperson, under Board Policy 9320.1, has set a limit of three minutes each for those who wish to address the Board. General comments will be heard under Agenda Section Delegations, Petitions and Communications at the beginning of the meeting. Those who wish to speak to items to be considered in Closed Session will be given the opportunity to do so following the completion of the open agenda and just prior to the Board's going into Closed Session. Individuals wishing to address the Board should fill out a Request Form and file it with the Vice Chancellor-Personnel, Dr. Padden, at the beginning of the meeting.

CONSENT AGENDA
BOARD OF TRUSTEES MEETING
May 2, 2000

PERSONNEL

1. Employment, Resignation, and Retirement, Certificated Personnel [00-98]
2. Employment, Promotion, Lateral Transfer, Change of Status, Leave of Absence, Termination, Resignation, and Retirement, Classified Personnel [00-99]

GENERAL

3. Consideration to Approve Out of State Travel, Destination Imagination Team, Fresno City College [00-100]
- 3a. Consideration to Approve Out-of-State Travel, Students in Free Enterprise Team, Fresno City College [00-100A]**
4. Consideration to Approve Resolution in the Matter of Year Four Continuing Implementation Grant, School-to-Career, Application and Funding Contract [00-101]
5. Consideration to Approve Agreement #9310, California Department of Education, Lease of Office Space [00-102]
6. Consideration to Approve Contracts between State Center Community College District, the California Department of Education, and the California Community College's Chancellor's Office [00-103]
7. Review of District Warrants and Checks [00-104]
8. Financial Analysis of Enterprise and Special Revenue Operations [00-105]
9. Budget Transfers and Expenditures Report [00-106]
10. Consideration of Claim Against State Center Community College District, Cheryl A. Hart [00-107]
11. Consideration of Bids, Kiosk Information Systems, Fresno City College [00-108]
12. Consideration of Bids, CNC Router, Fresno City College [00-109]

MINUTES OF MEETING OF
BOARD OF TRUSTEES
STATE CENTER COMMUNITY COLLEGE DISTRICT
April 4, 2000

Call to Order A regular meeting of the Board of Trustees of the State Center Community College District was called to order by President Ron Manfredi at 4:02 p.m., April 4, 2000, in the Forum Hall, Reedley College, 995 N. Reed Avenue, Reedley, California.

Trustees Present Ron Manfredi, President
Dorothy Smith, Vice President
H. Ronald Feaver, Secretary
Phillip J. Forhan (arrived at 4:10 p.m.)
Patrick E. Patterson (arrived 4:35 p.m.)
William J. Smith
Leslie Thonesen
Marylee McGough, Student Trustee, Fresno City College
Andy Gonzales, Student Trustee, Reedley College

Also present were:

Judith A. Redwine, Chancellor, SCCC
Thomas Crow, President, Reedley College
Dan Larios, President, Fresno City College
Jon Sharpe, Vice Chancellor, Business, SCCC
Henry Padden, Vice Chancellor, Personnel, SCCC
Don Yeager, Vice Chancellor/President Designate, North Centers

**Introduction of
Guests** Among the others present, the following signed the guest list

Cindy Spring, Executive Secretary to the Chancellor, SCCC
Joe Trofemuk, Legal Services Supervisor, SCCC
Brian Speece, Assistant Vice Chancellor, Business & Operations, SCCC
Paula Castagna, Academic Senate President & Staff, FCC
Anthony Abbott, Academic Senate President & Staff, RC
Woody Smothers, Classified Senate President and Building Maintenance Generalist, RC
Ed Eng, Director of Finance, SCCC
Gene Blackwelder, College Business Manager, RC
Ray Tjahjadi, Director, Information Systems, SCCC
Tony Cantu, Dean of Instruction, FCC
Karen Durham, Administrative Assistant, RC
Dave Kyle, Executive Director, SCCC Foundation
Michael Guerra, College Business Manager, FCC
Gene Blackwelder, College Business Manager, RC
Randy Vogt, Director of Purchasing, SCCC
Kathleen Bonilla, Public Information Officer, FCC

Introduction of
Guests (continued)

Terry Kershaw, Coordinator, Tech Prep Program
Laird Durley, Instructor, RC
Claudia Jorgensen, Student Services Specialist and Classified
Senate Representative, RC
Diana Gaither, Office Assistant III and Classified Senate
Representative, RC
Julia Gonzales, Department Secretary, FCC
Adelfa Lorenzano, Student Activities Assistant, RC
Pao Her, Associated Student Government, FCC
Sharon Grewal, Associated Student Body President, RC
Marty Anderson, Associated Student Body, RC
Gaby Obregon, Associated Student Body, RC

Approval of
Minutes

The minutes of the Board meeting of March 7, 2000, were
presented for approval.

It was moved by Ms. Smith and seconded by Mr. Smith that the
March 7, 2000, minutes be approved.

The motion carried by the following vote:

Ayes - 5
Noes - 0
Absent - 2

Chancellor's Report

Dr. Redwine reported that last week was a busy week for both
campuses as they hosted the evaluation teams from the Western
Association of Schools and Colleges. The accreditation went
well and everyone should be proud of what has been
accomplished over the past five years. She thanked five of the
Board members for their participation in the process.

Assemblymember Sarah Reyes will be holding a press
conference on Friday at 2:00 p.m. at Fresno City College
regarding community college funding issues.

Academic Senate
Report

Dr. Abbott, Reedley College Academic Senate President,
welcomed the Board, Chancellor, and other members of the
District administration to the campus. He shared the results of a
survey he received regarding last year's Reedley College
graduates. The intent of the exit survey was to measure the
students' satisfaction with their experience at the college and to
collect information on their future plans. The survey and data
analysis was conducted by Cyndie Sine in the Office of
Institutional Research. He noted that neither he nor the
Academic Senate did any of the work in putting the survey
together. Dr. Abbott highlighted that 98.5% of the respondents
agreed or strongly agreed that the courses they took helped them

Academic Senate
Report
(continued)

develop critical thinking and problem solving skills. About 94% of the respondents indicated that their courses challenged their academic abilities, and almost 95% agreed they could recommend Reedley College instructors to others. The lowest level of positive responses was instructor availability outside of class; however, 84% of the respondents indicated satisfaction with the opportunities to consult with their teachers outside of class.

Dr. Abbott continued that the college was visited last week by an external accreditation team. While reviewing the college's accreditation report, he noticed that Reedley College enrolled its first students in September 1927. Over the past 75 years, a great many people have worked at the campus, contributing their time, intelligence, and energy to building the college. The faculty who work there today, without exception, want to continue the good work of their predecessors and expand upon it. Perhaps that is why, when the faculty has concerns about instructional quality or about the integrity of the institution, they feel compelled to communicate these concerns. Maintaining the quality of the programs is a constant challenge, particularly in light of the relative under-funding provided by the state for community colleges; \$2,000.00 per student below the national average. Despite the lean budgetary environment, it is important that the faculty feels free to frankly and openly discuss any weaknesses or problems when they arise, because the quality of the programs must be a non-negotiable priority for everyone.

Classified Senate
Report

Mr. Woody Smothers, Reedley College Classified Senate President, welcomed the Board to the campus and stated the Senate was also involved in the accreditation process. He thanked those in the audience representing the Classified Senate and introduced the new Senate representatives for 2000-2001. He announced that Flex Day will begin at 10:00 a.m. on April 18 and the activities include: fire extinguisher safety training, a campus tree walk, lunch on the farm, and an expert on coupon shopping.

Associated Students
Report

Mr. Andy Gonzales, Reedley College Student Trustee, stated that he also had the opportunity to meet with the accreditation team and to share in the process. It was a great experience for him and he feels that without a shadow of doubt he attends the best community college in the Central Valley. As a community, Reedley sold 1,698 Kids Day newspapers of which 1,559 were sold by the college for a total of \$1,888.82 raised to benefit Valley Children's Hospital. The students also raised \$750.00 at the Big Brother Big Sister Bowl-A-Thon; a testament to the hard

Associated Students
Report
(continued)

work and determination of the Associated Student Body leaders. Spring Week is scheduled for next week with a host of activities including a rootbeer chugging contest; the game "Show Me the Money;" along with a fashion show, ping pong tournament, and a pizza party. He concluded his report by inviting everyone to Thursday's tennis match against Fresno City College.

Ms. Sharon Grewal, Reedley College Associated Study Body President, introduced the ASB students in the audience. She reported that she also was involved in the accreditation process and appreciated the opportunity to represent the students. The election for the 2000-2001 ASB officers will be next week.

Campus Report,
Reedley College

Dr. Crow introduced Karen Durham, CSEA liaison, and then reported the following from Reedley College:

The college successfully concluded its Accreditation Team's visit on Thursday, March 30. The team commended RC's "spirit of place" - with the staff, faculty, and administration being "cohesive, loyal, and supportive."

The Strategic Planning Committee will hold a planning session on Wednesday, April 5 from 2:30 to 7:30 p.m. in the Staff Dining Room. Dr. Max Tadlock will facilitate the session.

Congratulations to Adrian Beltran, Clerical Assistant in the Counseling Department and a former Reedley College student, on receiving a \$1,500 Hispanic Scholarship Fund award. Adrian is a first-semester Spanish major at CSUF.

The members of Alpha Gamma Sigma recently attended the state conference in Sacramento where six members (five of whom are CASS students), presented a workshop entitled "Foreign Student Perspectives." Two students, Marla Truscott and Hazel Lee, received Loly Awards, which included \$500 scholarships.

Fourteen Reedley College students were recently announced as Tools for Success winners in the areas of Automotive Technology, Aeronautics, Ag Mechanics, and Machine/Tool. The students will be awarded their sets of tools at a ceremony on Friday, May 12 at 9:30 a.m. in the FCC Theatre.

Art Instructor James Soares has been honored by being accepted into four National Watercolor shows in the past month. Soares is also featured at an exhibit at Townhouse Books in Reedley.

Campus Report,
Reedley College
(continued)

Congratulations to Residence Hall Supervisor Lisa McAndrews on being inducted as a 2000-20001 officer for the Reedley Chamber of Commerce.

As part of Kaleidoscope 2000, the LAND department will be celebrating Arbor Day with programs, exhibits, clinics, a tree planting event, and the dedication of the college's two new Tree Walks.

Author Ron Hansen will give the final presentation of the Spring 2000 Speakers Series on Thursday, April 13 at 7:00 p.m. in the Forum Hall. Hansen's work includes *Nebraska Stories*, *Desperadoes*, *Hitler's Niece*, and *Atticus*, which was a finalist for the National Book Award. The event is open to the public and there is no charge for admission.

The 2000 Staff Recognition Awards for Reedley College will be held on Thursday, May 11 at 1:30 p.m. in the Cafeteria.

The Dental Assisting Department will hold their annual Pinning Ceremony on Thursday, May 18 at 7:30 p.m. in the cafeteria. Twenty-one students will be pinned.

Campus Report,
Fresno City College

From Fresno City College, Dr. Larios reported the following

The Export Center joined Merced College Center for International Trade Development and the U.S. Department of Commerce to host the California-Mexico Agribusiness Leaders Seminar on March 31. The seminar featured guest speaker Richard Todd Drennan, director of the office of Agriculture Affairs at the U.S. Consulate in Nuevo Laredo, Mexico. It also included a live teleconference with Mexico City for a briefing on export opportunities for farm equipment and food products.

The College's annual open house, Showcase 2000, will be held Thursday, April 6 and is shaping up to be a spectacular event. Demonstrations, tours and activities include a civil war encampment and some eye-catching police and fire department equipment. Disabled Awareness Day and the vocational Career Skills Olympics will also be featured that day.

The Debate Team is the Community College 2000 National Parliamentary Debate champions. They earned top honors at the National Parliamentary Debate Championships held at Creighton University in Omaha, Nebraska March 9-13. They also ranked 16th against all two and four year colleges that competed.

Campus Report,
Fresno City College
(continued)

Department of Energy Secretary Bill Richardson has commended student Ning Liao for his participation in the Department of Energy Institute for Biotechnology, Environmental Science, and Computing for Community Colleges. The Institute took place at the Ernest Orlando Lawrence Berkeley National Laboratory during the summer of 1999. Ning spent eight weeks at the laboratory where he received hands-on experience in conducting research.

MS&E Associate Dean Susan Speece has been nominated to be named as an American Association for the Advancement of Science Fellow. In the U.S. it is the second highest honor a scientist can receive. The award will be given at the February 2001 San Francisco meeting.

International students counselor Laura deSantiago Gomez attended the Centers for Academic Program Abroad, International Program Development Workshop in Paris, France in February. The trip gave her first hand knowledge of what international students experience when they arrive in the U.S. CAPA provides college faculty and staff the opportunity to participate in cross-cultural training and instructional opportunities.

Both the Hispanic Male Youth Leadership Conference on March 11 and the Adelante Mujer conference on April 1 were held at FCC. Both conferences gave Hispanic youth the opportunity to learn more about going to college. Attendees also heard the personal stories of prominent Hispanics in the community.

It's time once again to roll up your sleeves and join in the fun of a Partners In Pride Clean Up day. The next one is scheduled for this Saturday, April 8. Check in for the event will begin at 7:30 a.m. in the District parking lot at Weldon and Glenn avenues.

The third annual Media Appreciation Lunch will be held on Friday, April 7. This year's invited guests include many of the on-air news anchors. They will hear about the history of FCC as we begin our plans to celebrate our 90th anniversary.

Accounting Instructor Jim Makofske was recently promoted to Captain in the Naval Reserve. He has been assigned to a new reserve unit based in Irvine, California. The command assists in the administration of military contracts.

Campus Report,
North Centers

Dr. Yeager reported the following from the North Centers:

Oakhurst:

The Center participated in the Pines Resort Job Fair in March to promote the new Hospitality Program. In the future, students from the program will be able to interview with recruiters from the hospitality industry at this event.

The Center also participated in the Eastern Madera County "Showcase of Schools" in March at Oak Creek Middle School, sponsored by the Education Committee of the Madera County Chamber of Commerce.

Madera:

The Third Annual Writers' Conference was held at the Madera Center in March, with over 300 people in attendance. The keynote speaker this year was David Masumoto, a local author and farmer. Students from local middle schools and high schools received awards and recognition from local sponsors and elected officials.

The Madera Kiwanis Club generously gave five scholarships in March to students currently attending the Madera Center.

Over 100 middle school students and their parents attended "College: Making It Happen" held in March. The focus of the event was on early academic preparation for college and availability of financial aid.

The Madera Center's first college dance will be held on Friday evening at Madera Center.

North Centers:

Accreditation team members from the Western Association of Schools and Colleges visited all three of the North Centers last week as a part of their accreditation review of Reedley College.

Students from the North Centers will be holding their first official North Centers' Student Government meeting this week.

Consent Agenda
Action

It was moved by Mr. Smith and seconded by Mr. Gonzales, and carried by the following vote that the Board of Trustees approve the consent agenda as presented:

Consent Agenda
Action
(continued) Ayes - 6
 Noes - 0
 Absent - 1

Employment,
Certificated
Personnel
[00-76]
Action approve certificated personnel recommendations, Item A, as presented. (List A is herewith made a part of these minutes as Appendix I, 00-76).

Employment,
Promotion, Lateral
Transfer, Change of
Status, and Leave
of Absence,
Classified Personnel
[00-77]
Action approve classified personnel recommendations, Items A through F, as presented. (Lists A through F are herewith made a part of these minutes as Appendix II, 00-77).

Study Abroad
Program, Semester
in England, Spring
2001
[00-78]
Action approve the offering of a 12-15 unit Semester in England program in Kingston-upon-Thames for the spring semester, 2001; and appoint Joan Newcomb and Charles Lynes, both from Fresno City College, as instructors for the program.

Consideration to
Approve Out-of-
State Travel, Phi
Theta Kappa
Students, Fresno
City College
[00-79]
Action a) out-of-state travel for one student to attend the 2000 American Association of Community Colleges Convention in Washington, D.C. on April 9-10, 2000;
 b) out-of-state travel for seven students to attend the Phi Theta Kappa Regional Convention in Reno, Nevada on May 4-7, 2000, with the understanding that the trip will be financed without requiring expenditures of District funds; and
 c) out-of-state travel for four students to attend the Phi Theta Kappa International Convention in Orlando, Florida, April 19-23, 2000, with the understanding that the trip will be financed without requiring expenditures of District funds

Consideration to
Approve Out-of-
State Travel,
Student members of
the Latin Jazz Band,
Jazz Ensemble and
Combo, Fresno City
College
[00-80]
Action approve out-of-state travel for members of the Latin Jazz Band, Jazz Ensemble, and Jazz Combo to attend the Reno Jazz Festival at the University of Reno, Reno, Nevada on April 14-15, 2000, with the understanding that the trip will be financed without requiring expenditures of District funds.

Consideration to
Approve Summer
Shakespeare Class
and Field Trip,
Fresno City College
[00-81]
Action

approve the 3-unit summer session class, Theatre Arts 47, offered by Fresno City College, including a field trip to the Shakespeare Festival in Ashland, Oregon, June 19-25, 2000, with the understanding that the activity will result in no excess cost to the District.

Consideration to
Approve Contracts
between the
District, the
California
Department of
Education, and the
California
Community
Colleges
Chancellor's Office
[00-82]
No Action

There were no contract renewals presented for consideration.

Review of District
Warrants and
Checks
[00-83]
Action

review and sign the warrants register for the period March 1, 2000, to March 31, 2000, in the total amount of \$11,522,769.74.

review and sign the check registers for the Fresno City College and Reedley College Co-Curricular and Bookstore Accounts for the period February 23, 2000, to March 24, 2000, in the amount of \$422,042.57.

Consideration of
Claim Against State
Center Community
College District --
Kyla Evangelho
[00-84]
Action

reject the claim submitted on behalf of Kyla Evangelho and direct the Vice Chancellor-Business to give written notice of said action to the claimant.

Consideration of
Resolution for
Participation in
Community College
League of California
2000-01 Cash Flow
(TRANS) Financing
Program
[00-85]
Action

- a) approve the Resolution of the Governing Board that authorizes:
 - 1) the borrowing of funds for fiscal year 2000-01 not to exceed \$10 million;
 - 2) the issuance and sale of 2000-01 Tax and Revenue Anticipation Notes (TRANS);
 - 3) participation in the Tax and Revenue Anticipation Note Financing Program; and
- b) authorize the administration to borrow up to a 15-month period, with a final determination made at time of pricing.

Consideration of
Bids, Relocatable
Addition, Oakhurst
Center
[00-86]
Action

award Bid #9900-29 in the amount of \$164,614.23 to Patch Master of Central California, the lowest responsible bidder for the Relocatable Addition at the Oakhurst Center, and authorize the Chancellor or Vice Chancellor-Business to sign an agreement on behalf of the District.

Consideration of
Bids, HVAC
Upgrades, Reedley
College
[00-87]
Action

award Bid #9900-35 in the amount of \$57,905.00 to Richard A. Spangle Air Conditioning, Inc., the lowest responsible bidder for HVAC upgrades at Reedley College, and authorize the Chancellor or Vice Chancellor-Business to sign an agreement on behalf of the District.

Consideration of
Bids, Floor
Covering Project,
Fresno City College
[00-88]
Action

award Bid #9900-31 in the amount of \$65,000.00 to A & M Carpet, Inc., the lowest responsible bidder for the Floor Covering Project at Fresno City College, and authorize the Chancellor or Vice Chancellor-Business to sign an agreement on behalf of the District.

Consideration to
Approve CMAS
Agreement for
Purchase of
Computer/Video
Projectors, Madera
Center
[00-89]
Action

approve participation in CMAS agreements with Minnesota Western, Inc. for the purchase of computer/video projectors for the Madera Center and other District locations, and authorize purchase orders to be issued against these contracts.

Consideration to
Approve CMAS
Agreement for
Purchase of
Computers and
Peripherals, Madera
Center
[00-90]
Action

approve participation in the CMAS agreement with Dell Marketing for the purchase of computers and peripherals for the Madera Center and other District locations, and authorize purchase orders to be issued against these contracts.

Consideration to
Approve CMAS
Agreement for
Purchase of
Network Cabling,
Fresno City College
[00-91]
Action

approve participation in the CMAS agreement with Anixter, Inc. for the purchase of Network Cabling at Fresno City College, and authorize the Chancellor or Vice Chancellor-Business to sign an agreement on behalf of the District.

Consideration to
Approve Use of
Existing Furniture
Contract, Madera
Center
[00-92]
Action

approve participation in the Fresno Unified School District Bid/Contract #2022 for the purchase of furniture for the Madera Center and other District locations as needed, and authorize purchase orders to be issued against this contract.

*****End of Consent Agenda*****

Public Hearing on
Initial Bargaining
Proposals Presented
by California School
Employees
Association, Local
379
[00-93]

Dr. Padden reviewed that the Government Code Section 3540 et seq., sets forth the sunshine provisions of the Rodda Act. The Board is required to hold public hearings on the initial proposals of the employees and those of the Board. The California School Employees Association presented its initial proposals for a successor contract to the Board on March 7, 2000. CSEA proposals are as follows:

Article 1 – Terms of Agreement

CSEA proposes a three (3) year term.

Article 2 – Recognition

CSEA proposes to delete language from previous contract which made certain positions in payroll and benefits “confidential” positions.

Public Hearing on
Initial Bargaining
Proposals Presented
by California School
Employees
Association, Local
379
[00-93]
(continued)

Article 7 – District/CSEA Relations – CSEA Rights

Section 11

CSEA proposes they be supplied with a list of all classified employees within the bargaining unit containing name, present classification, date of hire, home address, and home telephone number upon written request.

Section 13 – New

CSEA proposes a nondiscrimination clause regarding political affiliation or opinions, race, origin, religion, marital status, age, gender, or physical handicap.

Section 14 – New

CSEA proposes a nondiscrimination clause based upon union activity.

Article 12 – Bereavement Leave

CSEA proposes a minimum of three days bereavement – five (5) days out-of-state travel or more than 200 miles of in-state travel would be required.

Article 20 – Holiday Schedule

CSEA proposes to delete certain outdated language (e.g., Jan. 2, 1998 holiday)

Article 21 – Employee Evaluation

CSEA proposes new language allowing employee to respond to performance evaluations.

CSEA proposes a follow-up review of performance ratings with employee, evaluator and a union representative.

Article 23 – Transfers – Work Location

CSEA proposes to more narrowly define “work site” location and to prohibit requiring a unit member to work at multiple locations.

Public Hearing on
Initial Bargaining
Proposals Presented
by California School
Employees
Association, Local
379
[00-93]
(continued)

Article 29 – Hours of Work

CSEA proposes to eliminate current language regarding seniority assignment/Saturday and Sunday assignments and calls instead for voluntary assignment. If no volunteers, changes to assignment must be negotiated.

CSEA proposes that any person required to work on a Saturday as part of his/her regular work assignment shall receive an additional 10% above his/her regular rate of pay – if required to work a Sunday as part of his/her regular assignment then he/she is to receive an additional 20% of his/her regular rate of pay.

CSEA proposes to eliminate language regarding designation of workday.

CSEA proposes to eliminate language regarding work year.

CSEA seeks unspecified changes in the distribution of overtime that would include seniority, equitable distribution, and right of refusal.

CSEA seeks changes in the hours during which shift differential pay schedules would be honored (the earlier start times would result in a minimum increased cost of approximately \$55,000 annually).

CSEA proposes that the District provide at each building throughout the District lunchroom facilities and restroom facilities for CSEA members use.

CSEA proposes that if the District creates a new full-time position, that it be offered first to part-time persons in that class in descending order of seniority.

Article 31 –Health and Welfare Benefits

Section 1 – Health Insurance

CSEA proposes health insurance be provided employees and dependents at no cost.

Section 2 – Dental Insurance

CSEA proposes Delta Dental be the provider.
CSEA proposes unlimited coverage for dental care at no cost to the employee.

Public Hearing on
Initial Bargaining
Proposals Presented
by California School
Employees
Association, Local
379
[00-93]
(continued)

CSEA proposes a yearly limit on dental coverage of \$2,000.00 per covered employee. (This would increase District financial exposure by as much as \$1,680,000.00.)

Section 3 – Vision Insurance

CSEA proposes insurance be provided at no cost to employee.

Section 5 – Life Insurance

CSEA proposes coverage levels be increased from \$50,000 to \$70,000 per employee and from \$5,000 to \$15,000 for dependent coverage (cost – approximately \$26,208 per year).

Section 7 – Retiree Health Insurance

CSEA proposes that persons retiring prior to age 65, with a minimum of 10 years service immediately preceding retirement from the District, receive health, dental and vision insurance coverage for retiree and dependents at no cost to the employee until such time as employee reaches age 65 (this would cost approximately \$33,000 in year one, \$66,000 in year two, and increase by \$33,000 each year thereafter at today's rates).

CSEA proposes that retirees 65 and older receive a District contribution of \$1700.00 per year (an increase of approximately 9%) and that that amount be increased by 3% per year beginning in September 2001 (current increase is 2%).

Section 9 – Change in Insurance Carrier

CSEA proposes no change in insurance carrier or plan until a negotiated agreement is reached.

Article 34 – Pay and Allowances

CSEA proposes that for 2000-2001 the District pay the employees 7% PERS contribution (\$976,214).

CSEA proposes the salary schedule for 2001-2002 be increased by 7% or the COLA whichever is higher (\$1,044,549).

Public Hearing on
Initial Bargaining
Proposals Presented
by California School
Employees
Association, Local
379
[00-93]
(continued)

CSEA proposes for year three (3) that the salary schedule be increased the greater of 7% or the COLA (\$1,117,667 for a three-year cumulative expenditure of \$5,135,407).

Section 4 - Longevity Pay

CSEA proposes that employees be allowed to keep growth stipend for classes already taken, but needed to promote into higher class.

Section 10 - New - Parking

CSEA proposes free parking for all members of the bargaining unit (cost \$17,640 in current revenues).

Article 37 - Classification Studies

CSEA proposes this Article be deleted.

Article 37 - (new) Early Retirement Incentive Program

CSEA proposes that a person age 50 or more with at least 20 years of service to the District be given a retirement bonus equal to 5% times the number of years of services times the person's highest annual salary. Such bonus to be paid within 60 days of retirement (this could be very costly e.g., \$30,000 salary times 30 years of service times 5% = \$45,000 bonus).

Mr. Manfredi noted the attachment showing the changes to the contract and the fact that it is helpful to be able to see the changes being requested.

Public Hearing

Mr. Manfredi convened a public hearing at 4:40 p.m. There being no comments from the public, the hearing was closed at 4:41 p.m.

Consideration to
Approve New
Management
Position, Dean of
Instruction and
Student Services,
North Centers
(Clovis)
[00-94]

Dr. Padden stated that the North Centers continue to grow at an extremely rapid rate. The Centers have a combined enrollment of 5,489 headcount and 1,317 FTE per semester. (By way of comparison, Reedley College's enrollment is 4,971 headcount and 1,776 FTE.) The Clovis Center alone has 3,443 headcount and has been increasing at the rate of 20% to 30% annually. Madera has a headcount of 1,580 this spring; enrollments there are expected to increase after the new building opens in Fall 2000. Oakhurst experienced a 7.7% increase in headcount and a 4.7% increase in FTE this spring.

When the new building in Madera opens this fall, the Vice Chancellor of the North Centers will be located in Madera, leaving no full-time site manager at Clovis (recall that Clovis did have a full-time site manager until two years ago when Bob Keller left.) The Clovis Center currently has 32 sections in 13 classrooms at Buchanan High School, in addition to those held at the Center itself. Additional sections may be made available through CART if a satisfactory lease can be arranged. There are 207 sections offered at the Clovis Center each term.

The proposed new position would: assist the Vice Chancellor as needed in the administration of the Centers and serve as administrative head of the Centers in the absence of the Vice Chancellor, is generally responsible and provides leadership for instructional improvement throughout the total college program for day, evening, and summer classes; initiates research concerning the educational needs of the community; directs the entire student personnel program including admissions and records, counseling, guidance, and testing; discipline; financial aid and placement; health; veterans services; orientation; disabled student services, student government and activities; registration; CalWORKSs/Welfare-to-Work; and all other student personnel related activities.

The Board discussed at length the need to move forward at the present time with approval of the position, the timeline for recruitment for a start date in August, other positions that have been added in Madera and Oakhurst, the need for a long-range plan for the North Centers that would include a hiring strategy, and the proposed organizational chart indicating a Dean and Coordinator position.

Consideration to
Approve New
Management
Position, Dean of
Instruction and
Student Services,
North Centers
(Clovis)
[00-94]
(continued)
Action

A motion was made by Ms. Smith and seconded by Mr. Smith that this item be tabled for discussion at the Board Retreat with action at the May meeting. The motion carried by the following vote:

Ayes - 6
Noes - 1 (Mr. Patterson)
Absent - 0

California
Community College
Trustees 2000 Ballot
for Board of
Directors
[00-95]
Action

Mr. Manfredi reported that the Board has selected ten names to fill the vacancies on the CCCT Board of Directors this year. Eight of the candidates selected are incumbents.

It was moved by Ms. Smith and seconded by Mr. Forhan that the Board of Trustees authorize the Board Secretary to cast a ballot for Mario Nieto Senour, Mark Takano, Michele R. Jenkins, Anthony Bugarin, John H. Moore, Charles Hayden, Mary Mason, Carolyn Batiste, Kay Albiani, and Walt Rosebrock. The motion carried unanimously.

Consideration of
Bids, Seismic
Retrofit, Art/Home
Economics
Building, Fresno
City College
[00-96]

Mr. Sharpe stated that Bid #9900-22 is for the structural retrofitting for seismic standards of the existing Art/Home Economics Building at Fresno City College. Also included in this bid is the renovation of existing restrooms to upgrade student accessibility. This project is the result of seismic retrofits required by the Division of the State Architect after a survey of educational facilities statewide. The work of this project consists of the addition of new structural elements to the existing structure, demolition of first floor restroom facilities, the construction and installation of new restroom facilities, plumbing and electrical modifications, and modification to the existing signal systems. Funding for this project will be provided by the State Schedule Maintenance and Repair Program (Deferred Maintenance).

Action

A motion was made by Mr. Thonesen and seconded by Mr. Feaver that the Board of Trustees award Bid #9900-22 in the amount of \$223,400.00 to Durham Construction Company, the lowest responsible bidder for the Seismic Retrofit, Art/Home Economics Building, Fresno City College, and authorize the Chancellor or Vice Chancellor-Business to sign an agreement on behalf of the District.

Selection of 1999-00
Independent Auditor
[00-97]

Mr. Sharpe reviewed that the District received two proposals for Independent Auditor and explained that this item was a Request for a Proposal, not a bid, as it is a service contract. The administration is recommending the Board award the contract to the Vavrinek, Trine, Day & Company, even though their proposal is higher. He distributed copies of a reference list for this firm indicating the community college districts they currently serve. Mr. Sharpe continued that six years ago there was a Board subcommittee to select the auditor. However, Mr. Ed Eng and he have interviewed the proposed firm and feel strongly they will provide an excellent audit.

Action

A motion was made by Mr. Forhan and seconded by Mr. Smith that the Board of Trustees authorize utilizing the firm of Vavrinek, Trine, Day & Company for the purpose of conducting the District's annual audits for the period 1999-00 through 2000-02 in the amounts as follows: 1999-00 - \$51,000.00; 2000-01 - \$52,500.00; 2001-02 - \$53,900.00; with the understanding that at the end of the three year period the Board would review before extending the contract for an additional two years. The motion carried unanimously.

Reports of Board
Members

Ms. McGough, Fresno City College Student Trustee, reported the Associated Students were part of the accreditation process and that the team was very impressed with the progress of the students' current projects. The overall process helped the officers to get to know the campus even better and how well it runs. She thanked those that spearheaded the process for exemplifying the idea of teamwork, and thanked Dr. Larios and his administrators for the leadership they are providing. This weekend the Associated Students will be traveling to Anaheim for the CalSACC Conference which is designed to teach students about leadership, lobbying, student issues, and gives students a chance to share information. Fresno City College and Reedley College students will be traveling to the conference together. The bi-annual Vendor Faire will be held next week and will feature an array of discounted merchandise. Petitions to run for a student government office are now available to students and elections will be held in May. The annual Cinco de Mayo Queen Contest is now taking place and contestants representing different clubs are competing to see who can sell the most opportunity drawing tickets, which help raise money for the Cinco de Mayo festivities.

Mr. Forhan stated that the information contained in the survey report handed out by Dr. Abbott could be very valuable to the District and what it means to improving services to the students.

Reports of Board
Members
(continued)

He would like to see a survey on part-time versus full-time faculty by students. Mr. Smith added that it is an opportunity for the District to look at marketing as well.

Ms. Smith advised she is looking forward to representing the Board at the Reedley College graduation this year. She added that the District's employees have priority status to enroll in the Masters and/or Doctoral program being offered through California State University, Fresno and she hopes that the staff will take advantage of this opportunity.

Mr. Manfredi reported he had the opportunity to participate in the Writers' Conference at the Madera Center and complimented the staff for a great event.

Future Agenda
Items

Mr. Manfredi requested a special workshop to discuss on-line curriculum and distance learning.

Mr. Smith stated that some time ago there was discussion about a scholarship award in Bill Stewart's name and asked what has happened regarding this. Mr. Manfredi advised that it was assigned to the Foundation and that he will follow-up on the matter.

Closed Session

Mr. Manfredi stated that the Board, in closed session, will be discussing the following: Conference with Legal Counsel -- Anticipated Litigation: Pursuant to subdivision (b) of Section 54956.9; Public Employee Evaluation/Discipline: Pursuant to Government Code Section 54957; Conference with Labor Negotiator [SCFT and CSEA], Hank Padden, Pursuant to Government Code Section 54957.6; and Public Employment Consideration to Appoint Administrator, Special Assignment. Mr. Manfredi declared a recess at 5:16 p.m.

Open Session

Mr. Manfredi stepped out of the meeting and Ms. Smith assumed the chair. The Board moved into open session at 7:33 p.m., and Ms. Smith announced that the Board had nothing to report from closed session.

Adjournment

The meeting was adjourned at 7:35 p.m. by the unanimous consent of the Board.

H. Ronald Feaver
Secretary, Board of Trustees
State Center Community College District

STATE CENTER COMMUNITY COLLEGE DISTRICT
1525 E. Weldon
Fresno, California 93704

PRESENTED TO BOARD OF TRUSTEES

DATE: May 2, 2000

SUBJECT: Employment, Resignation, and Retirement,
Certificated Personnel

ITEM NO. 00-98

EXHIBIT: Certificated Personnel Recommendations

Recommendation:

It is recommended that the Board of Trustees approve the certificated personnel recommendations, Items A through C, as presented.

CERTIFICATED PERSONNEL RECOMMENDATIONS

A. Recommendation to employ the following persons:

<u>Name</u>	<u>Campus</u>	<u>Range & Step</u>	<u>Salary</u>	<u>Position</u>
Gilmore, Pamela	RC	III, 2	\$42,874	Office Technology Instructor
Minar, Cynthia	FCC	V, 1	\$45,336	Anthropology/ Archeology Instructor
Waterman, Jeanette	RC	III, 1	\$56,518	CalWORK's Coordinator

(Current part-time faculty)
(First Contract August 10, 2000 – May 18, 2001)

B. Recommendation to accept resignation for the following person:

<u>Name</u>	<u>Campus</u>	<u>Effective Date</u>	<u>Position</u>
Quiring, John	FCC	June 30, 2000	Executive Director, Training Institute

C. Recommendation to accept resignation for the purpose of retirement for the following person:

<u>Name</u>	<u>Campus</u>	<u>Effective Date</u>	<u>Position</u>
Neuman, Darlene	FCC	May 19, 2000	Business Office Occupations Instructor

D. Recommendation to re-employ the following persons:

<u>Name</u>	<u>Campus</u>	<u>Range & Step</u>	<u>Salary</u>	<u>Position</u>
Wen, Ixin	FCC	V, 3	\$54,714	Mathmatics Instructor

STATE CENTER COMMUNITY COLLEGE DISTRICT
1525 E. Weldon
Fresno, California 93704

PRESENTED TO BOARD OF TRUSTEES

DATE: May 2, 2000

SUBJECT: Employment, Promotion, Lateral Transfer,
Change of Status, Leave of Absence,
Termination, Resignation, and Retirement,
Classified Personnel

ITEM NO. 00-99

EXHIBIT: Classified Personnel Recommendations

Recommendation:

It is recommended that the Board of Trustees approve classified personnel recommendations.
Items A through I, as presented.

CLASSIFIED PERSONNEL RECOMMENDATIONS

A. Recommendation to employ the following persons (probationary):

<u>Name</u>	<u>Location</u>	<u>Classification</u>	<u>Range/Step/Salary</u>	<u>Date</u>
Neff, Jerry	DO	Programmer Analyst Position No. 1021	73-A \$4094	4/24/00

B. Recommendation to employ the following persons (extra help):

<u>Name</u>	<u>Location</u>	<u>Classification</u>	<u>Hourly Rate</u>	<u>Date</u>
Angel, Lisa	FCC	Registration Assistant	\$ 5.75	3/17/00
Burgin, Linda	FCC	Registration Assistant	5.75	3/31/00
Castillo, Monica	FCC	Registration Assistant	5.75	3/16/00
Frazier, Tiesha	FCC	Registration Assistant	5.75	3/16/00
Gonzalez, Monica	FCC	Registration Assistant	5.75	3/20/00
Mendoza, Renee	FCC	Registration Assistant	5.75	3/17/00
Mitchell, Travis	FCC	Registration Assistant	5.75	3/17/00
Paleo, Linda	FCC	Registration Assistant	5.75	3/16/00
Reyes, Gena	FCC	Registration Assistant	5.75	3/16/00
Rodriguez, Carmelita	FCC	Registration Assistant	5.75	3/16/00
Sibley, Cecilia	FCC	Registration Assistant	5.75	3/24/00

B. Recommendation to employ the following persons (extra help) (continued):

<u>Name</u>	<u>Location</u>	<u>Classification</u>	<u>Hourly Rate</u>	<u>Date</u>
Torres, Daniel	FCC	Registration Assistant	5.75	3/24/00
Egoian, Lillian	RC	Food Service Worker I	5.75	4/5/00
Cervantes, Tirza	FCC	Instructional Aide	5.75	3/31/00
Easter, Lamarra	FCC	Office Assistant I	5.75	4/5/00
Gasparin, Katalin	FCC	Office Assistant I	5.75	3/13/00
Lee, My Houa	FCC	Office Assistant I	5.75	3/24/00
Powell, Robin	FCC	Office Assistant I	5.75	2/16/00
Rangel, Michael	FCC	Office Assistant I	5.75	3/24/00
Terrazas, Frecie	Madera	Office Assistant I	5.75	4/10/00
Gartrell, Elizabeth	Madera	Tutor Assistant I	5.75	2/28/00
Hurtado, Maria	Madera	Tutor Assistant I	5.75	3/13/00
Shareef Rabiah	RC	Tutor Assistant I	5.75	2/11/00
Brown, Elizabeth	Clovis	Custodian	6.19	3/10/00
Chacon, Ramiro	Fresno	Custodian	6.19	3/31/00

B. Recommendation to employ the following persons (extra help) (continued):

<u>Name</u>	<u>Location</u>	<u>Classification</u>	<u>Hourly Rate</u>	<u>Date</u>
Lubs, Mark	FCC	Custodian	6.19	3/31/00
Morelos, Miguel	RC	Custodian	6.19	4/3/00
Wright, Kevin	RC	Custodian	6.19	3/1/00
Collins, Reshonda	FCC	Department Secretary	6.19	3/21/00
Padama, Melanie	RC	Department Secretary	6.19	4/10/00
Ellberg, Hanz	RC	Office Assistant III	6.96	4/10/00
Sanchez, Gregory	FCC	Duplicating Oper Tech	7.42	3/10/00
Mock, Nathan	FCC	Instructional Technician	7.73	3/31/00
Young, Rebecca	FCC	Art Model	7.73	3/13/00
Hovsepian, Erin	FCC	Deaf Interpreter	7.79	3/21/00
Caldera, Gary	DO	Student Pers Svc Asst	8.41	4/3/00
Rorabaugh, Kimberly	Madera	Financial Aid Asst I	9.02	4/10/00
Anderton, Elisa	FCC	Program Dev Asst	9.47	3/21/00
Martin, Barbara	DO	Office Assistant I	10.04	3/23/00

B. Recommendation to employ the following persons (extra help) (continued):

Name	Location	Classification	Hourly Rate	Date
Arifuku, Fred	DO	Bus Driver	10.57	4/17/00
Cornelius, Jeffrey	FCC	Program Dev Coor	10.83	3/31/00
Carter, Margaret	FCC	Program Specialist I	12.50	4/3/00
Flores, Laura	FCC	Program Specialist I	12.50	4/5/00
Frazier, Priscilla	FCC	Program Specialist I	12.50	3/21/00
Torias, Jr. Charles	FCC	Training Institute Instr	25.00	3/23/00

C. Recommendation to approve promotion of the following employee (regular):

Name	Location	Classification	Range/Step/Salary	Date
Harmon, Michael	DO	Maintenance Worker I Position No. 1099 to Maintenance Worker II	46-A \$2229 54-A \$2579	3/1/00
Price, Erin	FCC	Office Assistant I Position No. 2321 to Office Assistant II	38-A \$1742 41-B \$1970	3/1/00
Tran, Thuy	FCC	Office Assistant I Position No. 2325 to Office Assistant II	38-A \$1742 41-B \$1970	3/1/00
Juarez, Claudia	FCC	Office Assistant I Position No. 2314 to Office Assistant II	38-A \$1742 41-B \$1970	4/1/00

D. Recommendation to approve lateral transfer of the following employees (regular):

<u>Name</u>	<u>Location</u>	<u>Classification</u>	<u>Date</u>
Lacy, Ann	FCC to VTC	Administrative Aide Position No. 2046 to Position No. 4002	4/10/00

E. Recommendation to approve change of status of the following employees (regular):

<u>Name</u>	<u>Location</u>	<u>Classification</u>	<u>Range/Step/Salary</u>	<u>Date</u>
Torstensen, Jeffrey	FCC	Department Secretary Position No. 2028 to Administrative Aide Position No. 2046	44-E \$2455 53-B \$2642	1/12/00 thru 1/20/00
(replacing regular employee on leave)				
Willshaw, Bertha	FCC	Office Assistant II Position No. 2017 to	41-E \$2363 41-E+6%	1/31/00 thru 3/15/00; and 3/27/00 thru 4/30/00

(pursuant to CSEA agreement Article 34, Section B, out of class compensation)

F. Recommendation to approve leave of absence of the following employees (regular):

<u>Name</u>	<u>Location</u>	<u>Classification</u>	<u>Date</u>
Whitaker, Maria	FCC	Library/Learning Resource Assistant I Position No. 2092	4/18/00 thru 7/17/00

(unpaid leave pursuant to Family Leave Act)

G. Recommendation to approve termination of the following employee (probationary):

<u>Name</u>	<u>Location</u>	<u>Classification</u>	<u>Date</u>
Yakovetic, Patrice	FCC	Office Assistant III Position No. 2071	4/8/00

H. Recommendation to accept resignation of the following employee (regular):

<u>Name</u>	<u>Location</u>	<u>Classification</u>	<u>Date</u>
Lane, B. Joe	RC	Campus Financial Aid Manager Position No. 3125	4/14/00

I. Recommendation to accept resignation for purposes of retirement of the following employees (regular):

<u>Name</u>	<u>Location</u>	<u>Classification</u>	<u>Date</u>
Aguirre, Moses	RC	Instructional Technician – Auto Position No. 3035	6/29/00
Gowen, Evelyn	FCC	Bookstore Sales Clerk III Position No. 2079	7/1/00

STATE CENTER COMMUNITY COLLEGE DISTRICT
1525 E. Weldon
Fresno, California 93704

PRESENTED TO BOARD OF TRUSTEES

DATE: May 2, 2000

SUBJECT: Consideration to Approve Out-of-State
Travel, Destination Imagination Team,
Fresno City College

ITEM NO. 00-100

EXHIBIT: None

Background:

Fresno City College is seeking Board authorization for the Destination Imagination Team (formerly known as Odyssey of the Mind) to attend the Destination Imagination 2000 Global Tournament at Iowa State University in Ames, Iowa, May 23-28, 2000. The advisor is Greg Ohanian. No funds are being asked of the District.

Recommendation:

It is recommended that the Board of Trustees approve out-of-state travel for the Destination Imagination Team, Fresno City College, to attend the Destination Imagination 2000 Global Tournament at Iowa State University in Ames, Iowa, May 23-28, 2000, with the understanding that the trip will be financed without requiring expenditures of District funds.

STATE CENTER COMMUNITY COLLEGE DISTRICT
1525 E. Weldon
Fresno, California 93704

PRESENTED TO BOARD OF TRUSTEES

DATE: AMENDED
May 2, 2000

SUBJECT: Consideration to Approve Out-of-State Travel, Students in Free Enterprise Team, Fresno City College ITEM NO. 00-100A

EXHIBIT: None

Background:

Fresno City College is seeking Board authorization for the Students in Free Enterprise Team to attend the International SIFE Finals in Kansas City, Missouri, May 20-24, 2000. The advisors are Lydia Anderson and William Syvertsen. No funds are being asked of the District.

Recommendation:

It is recommended that the Board of Trustees approve out-of-state travel for the Students in Free Enterprise Team, Fresno City College, to attend the International SIFE Finals in Kansas City, Missouri, May 20-24, 2000, with the understanding that the trip will be financed without requiring expenditures of District funds.

STATE CENTER COMMUNITY COLLEGE DISTRICT
1525 E. Weldon
Fresno, California 93704

PRESENTED TO BOARD OF TRUSTEES

DATE: May 2, 2000

SUBJECT: Consideration to Approve Resolution in the
Matter of Year Four Continuing Implementation
Grant, School-to-Career, Application and
Funding Contract

ITEM NO. 00-101

EXHIBIT: Resolution

Background:

Under rules established by the State Employment Development Department, the State Center Consortium, (for which the District is the fiscal agent), must reapply for year four funding of its five year School-to-Career grant. In addition, the Board must pass a resolution approving the District's application. A copy of the resolution is attached for your review and approval. The grant contract is in the amount of \$600,000.00.

Recommendation:

It is recommended that the Board of Trustees adopt, as presented, Resolution #00-101 In the Matter of Year Four Continuing Implementation Grant, School-to-Career, Application and Funding Contracts, allowing the District and the State Center Consortium to enter into a contract with the State of California Employment Development Department in the amount of \$600,000.00 and to serve as fiscal agent and to coordinate regional School-to-Career activities for the counties of Fresno, Madera and Mariposa and hereby authorize Henry M. Padden, Vice Chancellor, Personnel, to sign the agreement and enter into contracts with the California Employment Development Department on behalf of the District.

MAY 10, 2000

BEFORE THE GOVERNING BOARD OF THE STATE CENTER COMMUNITY
COLLEGE DISTRICT OF FRESNO COUNTY, CALIFORNIA

In the Matter of Year Four)
Continuing Implementation)
Grant, School-to-Career,)
Application and Funding Contracts)

RESOLUTION #00-101

Whereas, there has been presented to the State Center Community College District (SCCCD) Board of Trustees for its consideration and acceptance a contract whereby the SCCC will serve as the fiscal agent to coordinate regional School-to-Career activities for the counties of Fresno, Madera, and Mariposa and act as an information conduit between those counties and the State of California, Employment Development Department, hereafter referred to as EDD;

Now, therefore be it resolved by the SCCC Board of Trustees that it hereby authorizes Henry M. Padden, Vice Chancellor, Personnel, to sign the agreements and to enter into contracts with the California Employment Development Department on behalf of the District;

The foregoing RESOLUTION was passed and adopted at a meeting of the State Center Community College District Board of Trustees, held on the 2nd day of May, 2000, by the following vote:

Ayes:

Noes:

Absent:

Dated: _____

Clerk of the Board
State Center Community College District

STATE CENTER COMMUNITY COLLEGE DISTRICT
1525 E. Weldon
Fresno, California 93704

PRESENTED TO BOARD OF TRUSTEES

DATE: May 2, 2000

SUBJECT: Consideration to Approve Agreement #9310,
California Department of Education, Lease of
Office Space

ITEM NO. 00-102

EXHIBIT: None

Background:

This is a continuing rental/lease agreement to provide office space and necessary equipment at the Clovis Center for the California Department of Education Central Valley Consultant, Tom Westerfield. The amount of the contract is \$8,334.20, but in no event shall costs exceed \$10,000.00.

Recommendation:

It is recommended that the Board of Trustees approve Agreement #9310 between the California Department of Education and the District in the amount not to exceed \$10,000.00 and authorize Henry M. Padden, Vice Chancellor-Personnel, to sign the agreement and enter into contracts with the California Department of Education on behalf of the District.

STATE CENTER COMMUNITY COLLEGE DISTRICT
1525 E. Weldon
Fresno, California 93704

PRESENTED TO BOARD OF TRUSTEES

DATE: May 2, 2000

SUBJECT: Consideration to Approve Contracts between
State Center Community College District, the
California Department of Education, and the
California Community Colleges Chancellor's Office

ITEM NO. 00-103

EXHIBIT: None

Background:

This item is a placeholder. At this time of year, the District often receives several contract renewals from the Department of Education and the California Community Colleges Chancellor's Office for Child Development, Child Nutrition, Tech Prep, and School-to-Career programs. The contracts are often received immediately prior to the Board meeting and do require Board approval and authorization for signatures.

Recommendation:

It is recommended that the Board of Trustees approve the contract renewals the District will forward from the California Department of Education and the California Community Colleges Chancellor's Office, and authorize Henry M. Padden, Vice Chancellor-Personnel, to enter into and sign said agreements on behalf of the District.

STATE CENTER COMMUNITY COLLEGE DISTRICT
1525 E. Weldon
Fresno, California 93704

PRESENTED TO BOARD OF TRUSTEES

DATE: May 2, 2000

SUBJECT: Review of District Warrants and Checks

ITEM NO. 00-104

EXHIBIT: None

Background:

It is recommended that the Board of Trustees review and sign the warrants register for the period March 28, 2000, to April 28, 2000, in the total amount of \$11,754,083.58.

It is also recommended that the Board of Trustees review and sign the check registers for the Fresno City College and Reedley College Co-Curricular Accounts and the Fresno City College and Reedley College Bookstore Accounts for the period March 14, 2000, to April 21, 2000, in the amount of \$242, 252.51.

STATE CENTER COMMUNITY COLLEGE DISTRICT
1525 E. Weldon
Fresno, California 93704

PRESENTED TO BOARD OF TRUSTEES

DATE: May 2, 2000

SUBJECT: Financial Analyses of Enterprise
And Special Revenue Operations

ITEM NO. 00-105

EXHIBIT: Financial Analyses

Background:

The financial reports for the period ending March 31, 2000, for the campus Bookstores and the Reedley Cafeteria and Residence Hall (Dormitory) are enclosed. These reports consist of a combined balance sheet and a combined statement of revenues and expenses reflecting the financial position and operating results for each of the above enterprise centers. The net revenue for all operations has a positive balance through March 31, 2000.

The enclosed statements are provided for Board information. No action is required.

**STATE CENTER COMMUNITY COLLEGE DISTRICT
ENTERPRISE & SPECIAL REVENUE OPERATIONS
BALANCE SHEET
As of MARCH 31, 2000**

	ENTERPRISE		SPECIAL REVENUE		
	FCC BOOKSTORE*	RC BOOKSTORE*	RC CAFETERIA*	RC DORMITORY*	TOTAL
ASSETS					
Cash in County Treasury					
Cash in Bank	\$ 1,528,672	\$ 365,887	\$ 99,978	\$ 86,835	\$ 1,86,813
Revolving Cash Fund	10,200	20,000	64,630	30,911	95,541
Accounts Receivable	33,840	35,560	9,500	27,388	9,500
Interest Receivable			28,864		56,252
Due from Other Funds			715	1,198	0
Prepaid Expenses	3,311	298			1,913
Inventory	1,083,555	353,745	28,050		28,050
Total Current Assets	\$ 2,659,578	\$ 775,490	\$ 231,737	\$ 146,332	\$ 378,069
Fixed Assets (Net)	1,440,786	150,264			
TOTAL ASSETS	\$ 4,100,364	\$ 925,754	\$ 231,737	\$ 146,332	\$ 378,069
LIABILITIES & FUND BALANCE					
Accounts Payable	\$ 15,467	\$ (6,293)			
Due to Other Funds	43,504	29,274	\$ 143,570	\$ 79,832	\$ 223,402
Warrants Payable			22,109	9	22,118
Total Current Liabilities	\$ 58,971	\$ 22,981	\$ 165,679	\$ 79,841	\$ 245,520
Unreserved Fund Balance	2,957,838	549,028	38,008	66,491	104,499
Reserved Fund Balance	1,083,555	353,745	28,050	0	28,050
Total Fund Balance	\$ 4,041,393	\$ 902,773	\$ 66,058	\$ 66,491	\$ 132,549
TOTAL LIABILITIES & FUND BALANCE	\$ 4,100,364	\$ 925,754	\$ 231,737	\$ 146,332	\$ 378,069

* Does Not Include Indirect Charges

**STATE CENTER COMMUNITY COLLEGE DISTRICT
ENTERPRISE & SPECIAL REVENUE OPERATIONS
STATEMENT OF REVENUE & EXPENDITURES**
Period Ending MARCH 31, 2000

	ENTERPRISE			SPECIAL REVENUE		
	FCC BOOKSTORE*	RC BOOKSTORE*	TOTAL	RC CAFETERIA*	RC DORMITORY*	TOTAL
TOTAL SALES	\$ 4,628,435	\$ 2,041,514	\$ 6,669,949	\$ 465,604	\$ 259,662	\$ 725,266
LESS COST OF GOODS SOLD						
Beginning Inventory	\$ 1,133,073	\$ 457,067	\$ 1,590,140	\$ 32,973	\$	\$ 32,973
Purchases	3,396,811	1,448,486	4,845,297	196,033		196,033
Sub-Total	4,529,884	1,905,553	6,435,437	229,006		229,006
Ending Inventory	1,083,554	353,745	1,437,299	28,050		28,050
Cost of Sales	3,446,330	1,551,808	4,998,138	200,956		200,956
GROSS PROFIT ON SALES	\$ 1,182,105	\$ 489,706	\$ 1,671,811	\$ 264,648	\$ 259,662	\$ 524,310
OPERATING EXPENDITURES						
Salaries	\$ 326,967	\$ 174,831	\$ 501,798	\$ 205,425	\$ 106,118	\$ 311,543
Benefits	79,900	37,322	117,222	54,901	20,356	75,257
Depreciation	89,980	9,580	99,560			0
Supplies	17,121	6,456	23,577	3,994	9,442	13,436
Utilities & Housekeeping	5,671	3,033	8,704		23,589	23,589
Rents, Leases & Repairs	9,749	4,337	14,086	3,088	7,499	10,587
Other	118,342	65,902	184,244	7,679		7,679
TOTAL OPERATING EXPENDITURES	\$ 647,730	\$ 301,461	\$ 949,191	\$ 275,087	\$ 167,004	\$ 442,091
NET OPERATING REVENUE (LOSS)	\$ 534,375	\$ 188,245	\$ 722,620	\$ (10,439)	\$ 92,658	\$ 82,219
OTHER REVENUE						
Vending	\$	\$	\$	\$	\$	\$
Interest	2,836	2,109	4,945	2,885	4,989	7,874
Other	28,084	9,223	37,307	2,535	1,574	4,109
Transfer In-Due from Other Funds				6,513	45	6,558
Transfer In-Lottery						
OTHER EXPENSES						
Transfer to Co-Curricular	112,500	30,000				
Transfer to Bond Redemp Fund					32,775	32,775
New Equipment						0
Other						
NET REVENUE (LOSS)	\$ 452,795	\$ 169,577	\$ 764,872	\$ 1,494	\$ 66,491	\$ 67,985

* Does Not Include Indirect Charges

UNAUDITED

STATE CENTER COMMUNITY COLLEGE DISTRICT
1525 E. Weldon
Fresno, California 93704

PRESENTED TO BOARD OF TRUSTEES

DATE: May 2, 2000

SUBJECT: Budget Transfers and Adjustments Report

ITEM NO. 00-106

EXHIBIT: Report

Background:

The enclosed Budget Transfers and Adjustments Report reflects budget adjustments through the period ended March 31, 2000. The adjustments represent changes to meet the on-going needs of the District, including categorical-funded programs, educational needs of the campuses, and new grants and agreements.

This report is strictly an informational report to the Board representing the changes in the budget and expenditure categories during the past quarter. Since it is for informational purposes only, there is no formal action required by the Board.

STATE CENTER COMMUNITY COLLEGE DISTRICT
GENERAL FUND - ALL FUNDING
Revenue Budget Adjustments/Transfers
As of 03/31/00

	<u>Adopted Budget</u>	<u>Budget Adj/Transfers</u>	<u>Current Budget</u>
81000	FEDERAL REVENUES		
81200	\$ 1,741,405	\$ 787,310	\$ 2,528,715
81300	4,521,613	1,003,628	5,525,241
81400	-	-	-
81500	124,128	128,341	252,469
81600	-	3,843	3,843
81700	2,188,556	568,501	2,757,057
81990	2,466,312	1,595,437	4,061,749
Total	<u>11,042,014</u>	<u>4,087,060</u>	<u>15,129,074</u>
86000	STATE REVENUES		
86100	42,221,080	750,123	42,971,203
86200	6,011,821	925,166	6,936,987
86500	2,180,552	287,508	2,468,060
86700	455,000	5,000	460,000
86800	2,400,000	200,000	2,600,000
86900	525,000	-	525,000
Total	<u>53,793,453</u>	<u>2,167,797</u>	<u>55,961,250</u>
88000	LOCAL REVENUES		
88100	28,735,000	(45,000)	28,690,000
88200	-	21,636	21,636
88300	18,000	266,871	284,871
88400	104,000	34,000	138,000
88500	212,500	(150,000)	62,500
88600	500,000	-	500,000
88700	3,074,000	498,126	3,572,126
88800	1,542,250	195,000	1,737,250
88900	1,522,409	50,850	1,573,259
Total	<u>35,708,159</u>	<u>871,483</u>	<u>36,579,642</u>
Total General Fund Revenues	<u>\$ 100,543,626</u>	<u>\$ 7,126,340</u>	<u>\$ 107,669,966</u>

**STATE CENTER COMMUNITY COLLEGE DISTRICT
GENERAL FUND - ALL FUNDING
Revenue Budget Adjustments/Transfers
As of 03/31/00**

	<u>Adopted Budget</u>	<u>Budget Adj/Transfers</u>	<u>Current Budget</u>
89000 OTHER FIN SOURCES			
89100 Proceeds/Fixed Assets	10,000	5,000	15,000
89400 Proceeds/Long-Term Debt	-	-	-
89800 Incoming Transfers	-	-	-
Total Other Financing Sources	\$ 10,000	5,000	\$ 15,000
Total District Revenues	<u>\$ 100,553,626</u>	<u>\$ 7,131,340</u>	<u>\$ 107,684,966</u>

**STATE CENTER COMMUNITY COLLEGE DISTRICT
GENERAL FUND - ALL FUNDING
Expenditure Budget Adjustments/Transfers
As of 03/31/00**

	<u>Adopted Budget</u>	<u>Budget Adj/Transfers</u>	<u>Current Budget</u>
91000	ACADEMIC SALARIES		
91100	\$ 21,615,778	\$ 116,645	\$ 21,732,423
91200	9,499,551	335,878	9,835,429
91300	7,641,702	(40,488)	7,601,214
91400	1,126,972	442,410	1,569,382
	<u>39,884,003</u>	<u>854,445</u>	<u>40,738,448</u>
	Total		
92000	CLASSIFIED SALARIES		
92100	15,443,610	465,302	15,908,912
92200	615,854	37,212	653,066
92300	2,813,002	728,245	3,541,247
92400	406,037	(91,732)	314,305
92500	1,302,220	(251,932)	1,050,288
92600	312,318	(11,933)	300,385
	<u>20,893,041</u>	<u>875,162</u>	<u>21,768,203</u>
	Total		
93000	BENEFITS		
93100	2,744,759	52,304	2,797,063
93200	-	-	-
93300	1,621,895	112,483	1,734,378
93400	6,912,271	154,017	7,066,288
93500	35,369	2,989	38,358
93600	787,653	27,189	814,842
93700	272,588	7,094	279,682
93900	400,000	-	400,000
	<u>12,774,535</u>	<u>356,076</u>	<u>13,130,611</u>
	Total		
94000	SUPPLIES & MATERIALS		
94200	166,106	50,267	216,373
94300	1,027,829	718,130	1,745,959
94400	1,813,489	319,720	2,133,209
94500	169,567	52,651	222,218
94600	14,000	1,700	15,700
	<u>3,190,991</u>	<u>1,142,468</u>	<u>4,333,459</u>
	Total		

STATE CENTER COMMUNITY COLLEGE DISTRICT
GENERAL FUND - ALL FUNDING
Expenditure Budget Adjustments/Transfers
As of 03/31/00

	<u>Adopted Budget</u>	<u>Budget Adj/Transfers</u>	<u>Current Budget</u>
95000 OTHER OPER EXPENSES			
95100 Utilities	2,458,282	168,580	2,626,862
95200 Rents, Leases and Repairs	1,914,808	350,201	2,265,009
95300 Mileage & Allowances	1,286,284	677,068	1,963,352
95400 Dues & Memberships	120,123	13,039	133,162
95500 Pers. & Cons. Services	4,558,859	2,251,170	6,810,029
95600 Insurance	594,421	46,201	640,622
95700 Advertising & Printing	1,285,948	480,799	1,766,747
95900 Other	686,879	559,812	1,246,691
Total	<u>12,905,604</u>	<u>4,546,870</u>	<u>17,452,474</u>
96000 CAPITAL OUTLAY			
96100 Sites			
96200 Site Improvement	295,600	242,176	537,776
96300 Buildings		385,677	385,677
96400 Bldg Renov & Improvements	530,368	1,425,028	1,955,396
96500 New Equipment	3,968,661	384,672	4,353,333
96600 Replacement Equipment	539,720	512,332	1,052,052
96700 Lease Bldgs & Equipment	9,816	2,608	12,424
96800 Library Books	55,500	(13,070)	42,430
Total	<u>5,399,665</u>	<u>2,939,423</u>	<u>8,339,088</u>
Total General Fund Expenditure	<u>\$ 95,047,839</u>	<u>\$ 10,714,444</u>	<u>\$ 105,762,283</u>
97000 OTHER OUTGO			
97100 Debt Service			
97300 Interfund Transfers	1,492,000		1,492,000
97500 Student Financial Aid			
97600 Other Payments/Students	24,267	12,504	36,771
97900 Contingencies	2,012,390	(1,910,443)	101,947
Total Other Outgo	<u>\$ 3,528,657</u>	<u>\$ (1,897,939)</u>	<u>\$ 1,630,718</u>
Total District Expenditures	<u>\$ 98,576,496</u>	<u>\$ 8,816,505</u>	<u>\$ 107,393,001</u>

STATE CENTER COMMUNITY COLLEGE DISTRICT
1525 E. Weldon
Fresno, California 93704

PRESENTED TO BOARD OF TRUSTEES

DATE: May 2, 2000

SUBJECT: Consideration of Claim Against State Center
Community College District - Cheryl A. Hart

ITEM NO. 00-107

EXHIBIT: Claim

Background:

The District is in receipt of a Claim submitted by Cheryl A. Hart, and the Board is asked to take action in accordance with the Government Code. The Board must reject the Claim where there is a question of District liability and the amount of the Claim is disputed. The Claim has been submitted to the JPA and its claims administrator for defense coverage.

Recommendation:

It is recommended that, in accordance with established procedures, the Board of Trustees reject the Claim submitted by Cheryl A. Hart and direct the Vice Chancellor-Business to give written notice of said action to the claimant.

STATE CENTER COMMUNITY COLLEGE DISTRICT
1525 E. Weldon
Fresno, California 93704

PRESENTED TO BOARD OF TRUSTEES

DATE: May 2, 2000

SUBJECT: Consideration of Bids
Kiosk Information Systems,
Fresno City College

ITEM NO. 00-108

EXHIBIT: None

Background:

RFP #9900-37 is for the purchase of six (6) student information kiosk units to be placed at key locations throughout Fresno City College. These kiosks will provide the campus with a "turn-key" self-service, publicly accessible campus information system. These systems consist of kiosk unit hardware, application software and the information and management infrastructure for the purpose of providing campus information to complete transactions such as ordering transcripts, completing registration/application forms and reviewing class schedules. Additionally, the self-service access to records will provide current and prospective students, employees of the campus, and campus visitors with event listings, campus maps and directions, as well as access to the District web site. These kiosk systems will also result in savings of labor, administrative and postage costs.

Funding for this project will be provided by a combination of Title III and Partnership for Excellence monies. Proposals were received from two (2) contractors as follows:

<u>Bidder</u>	<u>Bid Amount</u>
High Technology Solutions	\$114,380.46
TouchNet Information Systems, Inc.	\$129,594.84

Recommendation:

It is recommended that the Board of Trustees award RFP #9900-37 in the amount of \$114,380.46 to HTS, the lowest responsible bidder for the Kiosk Information Systems at Fresno City College, and authorize that purchase orders be issued against this RFP.

STATE CENTER COMMUNITY COLLEGE DISTRICT
1525 E. Weldon
Fresno, California 93704

PRESENTED TO BOARD OF TRUSTEES

DATE: May 2, 2000

SUBJECT: Consideration of Bids
CNC Router,
Fresno City College

ITEM NO. 00-109

EXHIBIT: None

Background:

Bid #9900-38 provides for the purchase of a router for use in the Technical and Industrial division at Fresno City College. As technology develops, the T & I division is tasked with providing up to date instructional equipment and materials. This piece of equipment is a state of the art computer network controlled router to be used for classroom instruction. This CNC router will be utilized in the CAD/CAM program. The low bid shown below is for the router specified in the bid documents and is of a size that is ideal for instructional purposes. Other bids were for routers that are too large or specialized for instructional use.

Funding for this purchase will be provided by 1999/00 VTEA funds for Fresno City College. Bids were received from three (3) contractors as follows:

<u>Bidder</u>	<u>Award Amount</u>
Motionmaster, Inc.	\$ 52,319.38
Thermwood Corporation	\$118,389.00
Computer Router Services, Inc.	\$155,680.00

Recommendation:

It is recommended that the Board of Trustees award Bid #9900-38 in the amount of \$52,319.38 to Motionmaster, the lowest responsible bidder for the CNC Router at Fresno City College, and authorize a purchase order to be issued against this bid.

STATE CENTER COMMUNITY COLLEGE DISTRICT
1525 E. Weldon
Fresno, California 93704

PRESENTED TO BOARD OF TRUSTEES

DATE: May 2, 2000

SUBJECT: Public Hearing on Board's Response to
Initial Bargaining Proposals by the
California School Employees Association,
Local 379

ITEM NO. 00-110

EXHIBIT: Board's Initial Bargaining Proposals

Background:

The California School Employees Association (CSEA) submitted their initial bargaining proposals for a new agreement and these proposals were sunshined before the public at the last regularly scheduled Board meeting. The District, in accordance with the provisions of the Government Code, will sunshine its initial proposals to the CSEA.

The District proposals:

Article 1 – Term of Agreement

The District proposes a three-year term – July 1, 2000 or date of ratification, which ever is later, through June 30, 2003.

Article 2 – Recognition

The District proposes that Administrative Assistants to the Deans of Instruction, Deans of Students and Business Managers be confidential positions.

Article 9 – Sick Leave

The District proposes that if unit members miss time during the regular work week for illness, and choose to make that time up later, such make-up will be paid at straight time rates.

Article 11 – Personal Necessity Leave

The District proposes members complete a 12-month probationary period before being eligible to take two days for personal leave and supervisor approval shall be necessary.

Article 20 – Holiday Schedule

The District proposes:

- 1) a 12-month probationary period before a person shall be eligible for paid holidays between Christmas and New Year's Day.
- 2) if a person regularly works a Saturday or Sunday or both, and a holiday falls on both a Friday and a Monday, work may be made up on the previous Monday or Tuesday.

Article 21 – Employee Evaluations

The District proposes:

- 1) a 12-month probationary period.
- 2) no transfers can take place during a unit member's probationary period.

Article 22 – Recruitment, Transfer, Promotions, Eligibility Lists

The District proposes no transfers to another unit until successful completion of a 12-month probationary period.

Article 23 – Transfers, Work Location

The District proposes clean up language regarding Reedley and the North Centers.

Article 27 – Grievance Procedure

The District proposes adding the "appropriate Vice Chancellor" to the appeal process at Level II.

Article 28 – Vacation Plan

The District proposes:

- 1) that 50% of earned vacation must be used by mid-year.
- 2) vacation does not become a vested right until completion of a 12-month probationary period.

Article 29 – Hours of Work

The District proposes to:

- 1) delete the section on Work Load.
- 2) delete "Monday through Friday" from the definition of Work Week.
- 3) if work is missed during a unit member's regular work week, work made up on the sixth or seventh day to a total of 40 hours shall be at the member's regular rate of pay.
- 4) a person called in for the "minimum 3-hours" shall complete three hours of duty.

Article 31 – Health and Welfare Benefits

Section 1 – Health Insurance

The District proposes to delete language requiring “mutual agreement” on health plans.

Section 2 – Dental Insurance

The District proposes successful completion of 12-months employment in order to be eligible for District paid premium contribution.

Section 5 – Life Insurance

The District proposes:

- 1) deletion of carrier name on plan
- 2) successful completion of 12-months of employment in order to be eligible for District premium contribution.

Section 6 – Premium Contribution

The District proposes to delete the section.

Article 23 – Openers

The District proposes language consistent with “Term”.

Article 34 – Pay and Allowances

Section 1 – Salary

The District proposes:

- 1) defines compensation
- 2) recognizes need to bargain salary, etc.
- 3) seeks more information from Governor’s “May Revise”
- 4) step advancement on salary schedule dependent upon “positive evaluation – effectively meets standards

Article 36 – Disciplinary Action

The District proposes a probationary period of 12-months (260 days in paid status)

Article 38 – (New)

The District proposes the establishment of a Custodial/Grounds Substitute Pool which would qualify participants for selection as regular employees in lieu of eligibility lists)

Recommendation:

It is recommended that the Board President open the meeting for public comment on the Board’s initial proposal to CSEA. Following the open comment period, no action is necessary by the Board at this time.

PAGE NO. 00 110

**INITIAL PROPOSAL FROM THE
STATE CENTER COMMUNITY COLLEGE DISTRICT
TO THE
CALIFORNIA SCHOOL EMPLOYEES ASSOCIATION
LOCAL 379
2000-2003 BARGAINING**

The collective bargaining proposal submitted herein by the State Center Community College District Board of Trustees are expressly pursuant to the Educational Employment Relations Act and Article V, WAIVER OF BARGAINING, of the current Collective Bargaining Agreement between the parties.

It is the intention of the State Center Community College District Board of Trustees to bargain in good faith over the proposals submitted by the respective parties to the Collective Bargaining Agreement.

Any article proposed for amendment by the Exclusive Representative in accordance with Article V, shall be deemed herein to remain unchanged in the Collective Bargaining Agreement unless otherwise expressly stated.

**ARTICLE 1
TERM OF AGREEMENT**

ARTICLE I, TERM OF AGREEMENT, shall remain unchanged except for the following amendments.

The term of agreement shall include the full statutory allowance of three years from **July 1, 2000** ~~July 1, 1997~~, or the date the Agreement is ratified and/or approved, whichever is later, to **June 30, 2003** ~~June 30, 2000~~.

**ARTICLE 2
RECOGNITION**

The classification of Personnel Assistant/Personnel Commission and Personnel Assistant/Certified Personnel and District Office Payroll positions of: Account Clerk III, Account Tech II, Account Tech I, and Benefits Specialist, **Administrative Assistant to the Deans of Instruction, Deans of Student Services (or combination), and Business Managers** shall hereafter be deemed a confidential position not contained within the bargaining unit represented by the Exclusive Representative CSEA.

**ARTICLE 9
SICK LEAVE**

Members who take time off during the workday for medical or dental appointments shall utilize sick leave for this purpose or, with permission of the supervisor, be allowed the alternative of making up all or a portion of the time on the same day. Members who have

a one (1) hour lunch period may use up to one-half (1/2) hour to make up the time lost. **Employees regardless of part-time, probationary or full-time will not be entitled to overtime pay. Should time loss occur during the regular scheduled workweek and it is necessary to perform additional duties it shall be paid at straight time.**

ARTICLE 11 PERSONAL NECESSITY LEAVE

5. Upon completion of an initial ~~six-month (6-month)~~ **twelve-month (12-month)** probation period, two (2) of the six (6) days may be granted for any reason deemed appropriate by the member **and the supervisor. with prior** Prior approval of the supervisor is necessary. ~~and~~ In no case will there be more than two (2) employees off at any one time in any one work unit under this paragraph.

ARTICLE 20 HOLIDAY SCHEDULE

For employees in the bargaining unit who have satisfactorily completed ~~six (6)~~ **twelve (12)** months of service, four (4) additional holidays shall be granted. The board shall determine placement of these holidays.

For employees whose workweek is defined as Tuesday through Saturday or Wednesday through Sunday and a holiday falls on both a Friday and a Monday (e.g. Lincoln's and Washington's Birthdays), the employee will be given the option to make up the Saturday workday or the Saturday/Sunday workdays on the preceding Monday or Monday and Tuesday should the worksite be closed on those employee's work days.

ARTICLE 21 EMPLOYEE EVALUATIONS

1. The following schedule shall be followed for the completion of the performance evaluation:
 - a. For regular probationary employees at the end of the second and fifth **and eleventh** months of service.
3. When a classified employee of the District assumes the duties and responsibilities of a higher classification on a temporary basis for at least one (1) month, one or more performance evaluations will be completed for that period of time and will be retained in his/her personnel file. **No transfers may take place during a unit member's probationary period.**

**ARTICLE 22
RECRUITMENT, TRANSFER, PROMOTION, ELIGIBILITY LISTS**

Section 2. Lateral Transfer

Any employee in the bargaining unit in the same class or related class as determined by the Personnel Commission may apply for transfer to that position by filing a written notice with the Personnel Department of the District. Persons seeking lateral transfer shall be offered an interview in addition to those persons in the top three (rule of 3) ranks on the eligibility list.

No employee shall be allowed to transfer to another unit until successful completion of 12-month probationary period.

**ARTICLE 23
TRANSFERS-WORK LOCATION**

Work location is defined as Fresno City College, ~~Kings River Community~~ Reedley College, "North Centers", District Office, Vocational Training Center or any such other work location as may be developed. Transfer of members from one work location to another on a temporary basis may be initiated by the District's management at any time such transfer is judged to be in the best interest of the District but shall not exceed thirty (30) days without written consent of the employee. The unit member affected by such transfer shall be given notice as soon as administratively practicable and a conference will be held between the appropriate management person and the unit member in order to discuss the reasons for the transfer.

**ARTICLE 27
GRIEVANCE PROCEDURE**

B. Level II:

1. In the event the grievant is not satisfied with the decision at Level I, he/she may appeal the decision on the appropriate form to the college president, **appropriate Vice Chancellor**, or his/her designee, within five (5) days.
2. This statement shall include a copy of the original grievance and a written copy of the decision rendered by the unit member's supervisor or designee.
3. The college president, **appropriate Vice Chancellor**, or his/her designee, shall communicate the decision to the grievant in writing within seven (7) days of receiving the appeal. Either the grievant or the college president, or his/her designee, may request a personal conference within the above time limits.

ARTICLE 28 VACATION PLAN

Vacation Scheduling

Vacations shall be scheduled by the employee and approved by the immediate supervisor, and may be taken at the convenience of the District at any time during the school year. **Fifty percent (50%) of vacation time earned must be consumed by midyear.** Management may circulate a vacation schedule at the beginning of the academic year in order to survey employee vacation preferences to assist in anticipation of work coverage. Employees are not obligated to the dates indicated and are not required to provide dates if vacation plans are not known in advance. Food service employees shall take vacation at the discretion of the cafeteria manager in not less than two (2) hour increments or more during days school is in session, and shall not exceed forty (40) hours in any one (1) school year. These hours shall be scheduled first on a voluntary basis and, secondly, on a rotational basis. Cafeteria employees with accumulated vacation hours at the end of the school year shall be paid in a lump sum payment for unused vacation. If an employee does not use his/her full annual vacation, the amount not taken shall accumulate for use in the next year. In a work unit where vacation schedules are staggered, the employee with the most seniority shall be given priority for scheduling his/her vacation. Permission to use vacation in advance of earning may be granted by the District.

Vacation time may be taken in increments of one (1) hour.

Earned vacation shall not become a vested right until completion of the initial ~~six (6)~~ **twelve (12)** months of employment, and may not be used until the first day of the calendar month after the completion of ~~six (6)~~ **twelve (12)** months of active service with the District.

ARTICLE 29 HOURS OF WORK

~~Work Load: Any current Saturday and/or Sunday assignment shall be made on the basis of the least seniority or voluntary acceptance within appropriate work unit. In the event that a member is assigned to Saturday and/or Sunday duty, that member shall have the right to reassignment to any vacant or new position assigned a regular Monday through Friday schedule for which he/she qualifies.~~

~~Further, the District agrees to advertise new positions and/or position vacancies in such a manner which will allow for new staff to be hired to work weekend assignments, in order to relieve current staff of such assignments.~~

Work Week: The Board agrees to establish the work week for members as being five (5) consecutive days, ~~Monday through Friday~~, of eight (8) hours per day and forty (40) hours per week. ~~The Board may assign members to work days other than Monday through Friday when the needs of the District so dictate.~~ The length of any member work day

shall be established by the board in compliance with the law for each member relative to the needs of the District. Flex week hours may be granted at the employee's request with approval of the supervisor.

Overtime: The board agrees to compensate members, except police officers at the rate of one and one-half (1-1/2) times the employee's regular rate of pay as described in Article 34, and pursuant to the applicable provisions of the Fair Labor Standards Act and the Education code for each hour of work required in excess of the eight (8) hour work day or forty (40) hour week. The one and one-half (1-1/2) time compensation rate shall be in addition to the regular rate of pay when applied to work performed on a holiday. Police officers shall be entitled to one and one-half (1-1/2) time for more than a forty (40) hour work week. Employees shall be compensated at the rate of one and one-half (1-1/2) times their regular rate of pay for work assigned on the sixth and seventh work day. **If illness occurs during a unit member's normal workweek and the unit member chooses to make up the lost time on the sixth or seventh day as make up – such additional hours to a total of 40 maximum for the week shall be paid at straight time.**

~~Minimum Call-in Time: A member required to work on a day when the employee is not scheduled to work shall receive a minimum of three (3) hours pay at the appropriate rate. The individual called in must complete three hours of duties.~~

ARTICLE 31 HEALTH AND WELFARE BENEFITS

Section 1. HEALTH INSURANCE

~~D. Any health insurance plan(s) offered to unit members shall first be mutually agreed to by the District and the CSEA.~~

The unit member will pay the difference between the District contribution and the cost of any premium in excess of the District contribution for any selected health plan.

Section 2. DENTAL INSURANCE:

C. Unit members and their dependents shall become eligible for dental benefits following successful completion of ~~six (6)~~ **twelve (12)** months employment with the District. During this waiting period, unit members may purchase the insurance by contributing the month premiums.

Section 5. LIFE INSURANCE

A. The District shall provide a level term life insurance program for eligible unit members and their dependents: ~~Provident~~ \$50,000 level term ~~Plan-LTF8~~ plus \$5,000.00 dependent coverage. This benefit shall become effective as soon after the ratification approval process as practicable.

- C. Unit members and their dependents shall become eligible for life benefits following successful completion of ~~six (6)~~ **twelve (12)** months employment with the District. Unit members may purchase the insurance by contributing the monthly premiums during this waiting period.

Section 6.

~~The District shall pay one hundred percent (100%) of the premium for coverage listed in Section 2, 3, 4, and 5, except as otherwise stated herein.~~

**ARTICLE 33
OPENERS**

During ~~1998-99~~ **2001-02** and ~~1999-2000~~ **2002-03** neither party shall be obligated to bargain any amendment to this Agreement unless both parties mutually agree to reopen negotiations.

CSEA shall submit their proposal for a successor contract to the District not later than the regular Board meeting in March ~~2000~~ **2003** and the Board shall hold the public hearing on the proposal at the next regular Board meeting.

If, during the term of this Agreement, the Personnel Commission is terminated, the parties agree to negotiate articles for classification, and reclassification.

**ARTICLE 34
PAY AND ALLOWANCES**

Compensation for members of the Classified Bargaining Unit shall include but not be limited to:

1. salary
2. step and longevity
3. salary/wage-fringe impact
4. health and welfare benefits
5. additional costs as related to the implementation of the Agreement (includes step/longevity increase)

The State Center Community College District recognizes its obligation to bargain over salary and benefits to employees represented by the Exclusive Representative.

Section 3. Salary Schedule Progression

The following formulas shall determine a classified employee's progression on the salary schedule:

~~A new employee receives his/her first salary increment (step) one (1) year subsequent to the employee's anniversary date. An employee's anniversary date is defined as the first of the month following the date of hire, unless the date of hire is the first of the month, then that is considered the anniversary date. Salary step increases shall be granted considered annually on the anniversary date until the member reaches the maximum step (E) of his/her salary range.~~

Employee may advance in salary step increase only if employee meets "effective – meets standards". If employee is not performing he/she should not be allowed advance in salary step until the next evaluation period.

ARTICLE 36 DISCIPLINARY ACTION

CLASSIFIED PERSONNEL/DISCIPLINARY ACTIONS

I. STATUS OF PERMANENT EMPLOYEES

After serving a probationary period of ~~130~~ 260 days in paid status, (police, one calendar year) an employee in the classified service shall thereupon be designated as a permanent employee. No person in permanent classified service shall be suspended, demoted or dismissed, except for reasonable cause as detrimental to the efficiency of the classified service.

ARTICLE 38 CUSTODIAL/GROUNDS SUBSTITUTE POOL

The District shall create a "custodial/grounds pool" of substitute custodian/grounds persons for purposes of day-to-day casual assignments as replacements for employees on leave, substitute assignment, limited term appointment, provisional appointment, emergency appointment and vacancies which are yet to be filled by probationary appointments. Individuals selected for assignments and appointments from the custodial/grounds pool shall not be designated as classified employees and shall not be members of the classified bargaining unit represented by the Exclusive Representative (CSEA). It is understood that in order to ensure the efficiency of the service, employees in the custodial pool may be selected by management for probationary appointment to any position to which they are qualified without application, placement on the eligibility list, oral interview, or any other preliminary selection procedure.

STATE CENTER COMMUNITY COLLEGE DISTRICT
1525 E. Weldon
Fresno, California 93704

PRESENTED TO BOARD OF TRUSTEES

DATE: May 2, 2000

SUBJECT: Consideration to Approve New Management ITEM NO. 00-111
Position, Dean of Instruction and Student Services,
North Centers (Clovis)

EXHIBIT: Job Description and Proposed Organizational Chart

Background:

This item is a placeholder as it was tabled by the Board at the April 4, 2000, meeting for further discussion at the Retreat and action at the May 2, 2000 meeting.

The North Centers continue to grow at an extremely rapid rate. The Centers have a combined enrollment of 5,489 headcount and 1,317 FTE per semester. (By way of comparison, Reedley College's enrollment is 4,971 headcount and 1,776 FTE.) The Clovis Center alone has 3,443 headcount and has been increasing at the rate of 20% to 30% annually. Madera has a headcount of 1,580 this spring; enrollments there are expected to increase after the new building opens in Fall 2000. Oakhurst experienced a 7.7% increase in headcount and a 4.7% increase in FTE this spring.

When the new building in Madera opens this fall, the Vice Chancellor of the North Centers will be located in Madera, leaving no full-time site manager at Clovis (recall that Clovis did have a full-time site manager until two years ago when Bob Keller left.) The Clovis Center currently has 32 sections in 13 classrooms at Buchanan High School, in addition to those held at the Center itself. Additional sections may be made available through CART if a satisfactory lease can be arranged. There are 207 sections offered at the Clovis Center each term.

The proposed new position would: assist the Vice Chancellor as needed in the administration of the Centers and serve as administrative head of the Centers in the absence of the Vice Chancellor, is generally responsible and provides leadership for instructional improvement throughout the total college program for day, evening, and summer classes; initiates research concerning the educational needs of the community; directs the entire student personnel program

including admissions and records, counseling, guidance, and testing; discipline; financial aid and placement; health; veterans services; orientation; disabled student services, student government and activities; registration; CalWORKSs/Welfare-to-Work; and all other student personnel related activities.

Recommendation:

It is recommended that the Board of Trustees authorize a new administrative position, Dean of Instruction and Student Services for the North Centers (Clovis Center initially), effective August 1, 2000, with placement on the Management Salary Schedule, Range 66.

**STATE CENTER COMMUNITY COLLEGE DISTRICT
DEAN OF INSTRUCTION AND STUDENT SERVICES—NORTH CENTERS**

Under the general direction of the North Centers Vice-Chancellor/President Designate and in accordance with provisions of the education code, the rules and regulations of the Board of Governors of the California Community Colleges, and the policies of the District, the Dean of Instruction and Student Services performs the following duties:

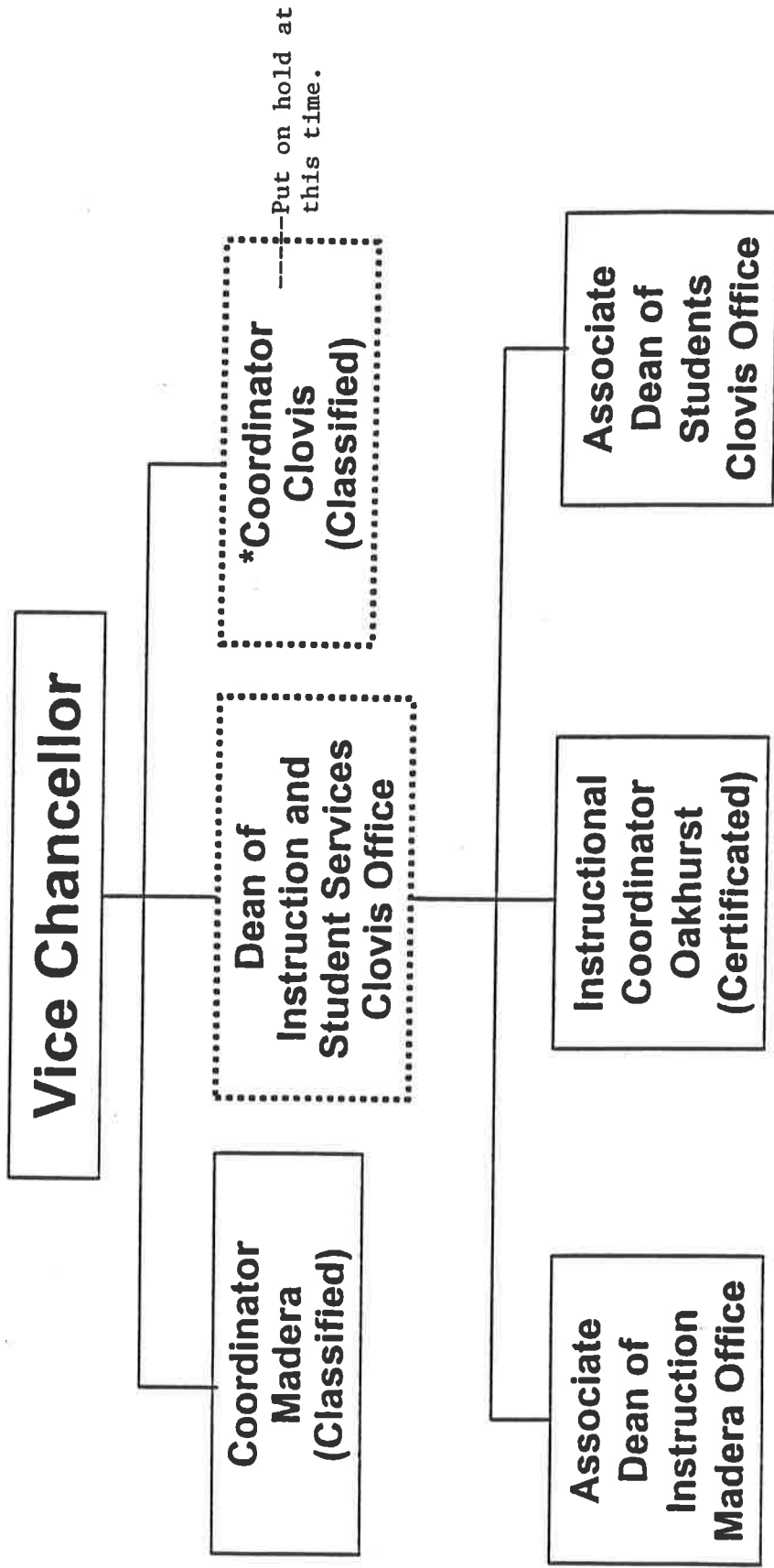
Academic & Instructional Services: Duties and Responsibilities

1. Assists the Vice-Chancellor as needed in the administration of the centers and serves as administrative head of the centers in the absence of the Vice-Chancellor.
2. Is generally responsible for the total instructional program, including curriculum development; consults with associate deans and staff in the curriculum development process to assure that the curriculum implements the centers' education objectives; and maintains a current file of all course outlines.
3. Is generally responsible and provides leadership for instructional improvement throughout the total college program, day, evening, and summer; consults with associate deans and staff and uses class visitations, research studies, and other appropriate methods in promoting improvement of the instructional program.
4. Confers with associate dean regarding certificated staff needs, selection, assignments, teaching load, evaluation, and retention, and makes recommendations to the Vice-Chancellor.
5. Is generally responsible for and, after conferring with associate deans, makes recommendations to the president for the total instructional budget.
6. Represents the centers at local and state articulation meetings; assumes responsibility for institutional articulation.
7. Is generally responsible, with the assistance of the associate deans, for preparation of examination, office, facility, and teaching schedules.
8. Is generally responsible for preparation and distribution of the faculty manual, schedule of courses, and special bulletins describing educational opportunities at the centers.
9. Is generally responsible for supervision of the library, media center, and tutorial center; encourages effective and extensive use of these facilities by faculty and students.

Student Services: Duties and Responsibilities

1. Directs the entire student personnel program including:
 - a. Admissions and Records
 - b. Counseling, Guidance, and Testing
 - c. Discipline
 - d. Financial Aid and Placement
 - e. Health
 - f. Veterans Services
 - g. Orientation
 - h. Disabled Students Services
 - i. Student Government and Activities
 - j. Registration
 - k. CalWORKs/Welfare-To-Work
 - l. All other student personnel-related activities
2. Submits annual report to centers' Vice-Chancellor, including recommendations for improvement of services.
3. Develops, with assistance of staff, objectives for program improvement through in-service training.
4. Recommends personnel for employment to the centers' Vice-Chancellor.
5. Coordinates the recruitment program between high schools and the centers.
6. Furnishes leadership in developing a better working relationship with community agencies.
7. Plans and coordinates research necessary to determine if the student personnel program is meeting needs and how the program may be improved.
8. Responsible for the administration of student body finances.
9. Directs the planning and organization for commencement.

State Center Community College District North Centers Organizational Chart PROPOSAL



* Pending SCCCD Board approval

☐ = Present Positions

⋯☐ = Proposed Positions

Location Designates Home Office

STATE CENTER COMMUNITY COLLEGE DISTRICT
1525 E. Weldon
Fresno, California 93704

PRESENTED TO BOARD OF TRUSTEES

DATE: May 2, 2000

SUBJECT: Consideration of Quarterly Financial
Status Report

ITEM NO. 00-112

EXHIBIT: Report

Background:

Enclosed is the March 31, 2000, Quarterly Financial Status Report (CCFS-311Q) for the District General Fund, as required for community college districts (ECS 84043). In accordance with State instructions, a copy of the report will be forwarded to the State Chancellor's Office.

The quarterly financial report reflects projected revenues and expenditures in line with the annual budget, as amended for additional grants, programs, etc. Also included in this report are projected costs associated with the negotiated and Board-approved part-time bargaining group.

Recommendation:

It is recommended that the Board of Trustees acknowledge the Quarterly Financial Status Report (CCFS-311Q), as presented.

III. Has the district settled any employee contracts during this quarter? Yes No

If yes, complete the following: (If multi-year settlement, provide information for all years covered.)

SALARIES

Contract Period Settled (Specify)	Management		Part-time Academic (Certificated)		Classified	
	Total Salary Cost Increase	%*	Total Salary Cost Increase	%*	Total Salary Cost Increase	%*
Year 1 <u>1999-00</u>	\$ _____	____%	\$ <u>452,139</u>	<u>6.8%</u>	\$ _____	____%
Year 2 <u>2000-01</u>	\$ _____	____%	\$ <u>482,885</u>	<u>6.8%</u>	\$ _____	____%
Year 3 <u>2001-02</u>	\$ _____	____%	\$ <u>515,721</u>	<u>6.8%</u>	\$ _____	____%

*As specified in Collective Bargaining Agreement.

BENEFITS

Contract Period Settled	Management Total	Academic Total	Classified Total
Year 1 <u>1999-00</u>	\$ _____	\$ <u>31,379</u>	\$ _____
Year 2 <u>2000-01</u>	\$ _____	\$ <u>33,877</u>	\$ _____
Year 3 <u>2001-02</u>	\$ _____	\$ <u>35,791</u>	\$ _____

Include a statement regarding the source of revenues to pay salary and benefit increases, e.g., from the district's reserves, from cost-of-living, etc.

IV. Did the district have significant events for the quarter (include incurrence of long-term debt, settlement of audit citations or legal suits, significant differences in budgeted revenues or expenditures, borrowing of funds (TRANS), issuance of COPs, etc.)? Yes No

If yes, list events and their financial ramifications. (Include additional pages of explanation if needed.)

V. Does the district have significant fiscal problems that must be addressed this year? Yes No
Next year? Yes No

If yes, what are the problems and what actions will be taken? (Include additional pages of explanation if needed.)

CERTIFICATION

To the best of my knowledge, the data contained in this report are correct.

Am Shye
District Chief Business Officer
Date 4/26/00

Quarter Ended: March 31, 2000

State Center Community College District

To the best of my knowledge, the data contained in this report are correct. I further certify that this report ~~was~~ will be presented at the governing board meeting specified below, afforded the opportunity to be discussed and entered into the minutes of that meeting.

District Superintendent Date

Governing Board Meeting Date: May 2, 2000

STATE CENTER COMMUNITY COLLEGE DISTRICT
 Annual Budget Report Ending 03/31/00
 Options - All Statuses

04-19-00
 Fiscal Year: 2000

GL CLASS: 8 - REVENUE

GL Account	YTD Encumbrances	MTD Actual	YTD Actual	Annual Budget	Available % Avail
MAJ.OBJ: 81 - FEDERAL REVENUES	0.00	645,726.01-	5,589,329.67-	15,129,074.00-	9,539,744.33-
MAJ.OBJ: 86 - STATE REVENUES	85,000.00	33,370.00	43,044,208.97-	55,961,250.00-	13,002,041.03-
MAJ.OBJ: 88 - LOCAL REVENUES	0.00	1,227,594.35-	21,567,255.62-	36,579,642.00-	15,012,386.38-
MAJ.OBJ: 89 - OTHER FINANCIAL SOURCES	0.00	0.00	15,162.60-	15,000.00-	162.60
GL CLASS: 8 - REVENUE	85,000.00	1,839,950.36-	70,215,956.86-	107,684,966.00-	37,554,009.14-
					34.87

STATE CENTER COMMUNITY COLLEGE DISTRICT
 Annual Budget Report Ending 03/31/00
 Options - All Statuses

04-19-00
 Fiscal Year: 2000

LOC.GRP: 1 - DISTRICT OFFICE

GL Account	YTD Encumbrances	MTD Actual	YTD Actual	Annual Budget	Available & Avail
MAJ.OBJ: 91 - ACADEMIC SALARIES	0.00	87,136.91	735,516.77	1,253,779.00	518,262.23
MAJ.OBJ: 92 - CLASSIFIED SALARIES	0.00	404,944.71	3,518,573.11	4,717,379.00	1,198,805.89
MAJ.OBJ: 93 - EMPLOYEE BENEFITS	1,770.00	180,927.11	1,420,561.89	2,039,931.00	617,599.11
MAJ.OBJ: 94 - SUPPLIES & MATERIALS	66,038.09	26,086.18	215,872.75	294,227.00	12,316.16
MAJ.OBJ: 95 - OTHER OPER EXP & SERVICE	705,305.04	295,597.77	2,561,017.47	5,047,221.00	1,780,898.49
MAJ.OBJ: 96 - CAPITAL OUTLAY	81,968.51	118,799.10	266,219.19	569,757.00	221,569.30
MAJ.OBJ: 97 - OTHER OUTGO	0.00	0.00	723,500.00	1,223,500.00	500,000.00
LOC.GRP: 1 - DISTRICT OFFICE	855,081.64	1,113,491.78	9,441,261.18	15,145,794.00	4,849,451.18

STATE CENTER COMMUNITY COLLEGE DISTRICT
 Annual Budget Report Ending 03/31/00
 Options - All Statuses

04-19-00
 Fiscal Year: 2000

GL Account	YTD Encumbrances	MTD Actual	YTD Actual	Annual Budget	Available & Avail
MAJ.OBJ: 91 - ACADEMIC SALARIES	0.00	2,579,658.81	19,264,205.81	26,972,083.00	7,707,877.19
MAJ.OBJ: 92 - CLASSIFIED SALARIES	0.00	1,136,416.23	9,547,176.32	12,635,688.00	3,088,511.68
MAJ.OBJ: 93 - EMPLOYEE BENEFITS	0.00	635,462.09	5,433,335.91	7,908,004.00	2,474,668.09
MAJ.OBJ: 94 - SUPPLIES & MATERIALS	823,985.36	232,885.66	1,619,032.91	2,753,743.00	310,724.73
MAJ.OBJ: 95 - OTHER OPER EXP & SERVICE	1,072,383.99	589,729.40	4,495,557.24	9,318,858.00	3,750,916.77
MAJ.OBJ: 96 - CAPITAL OUTLAY	641,383.24	280,566.41	1,952,407.77	4,914,707.00	2,320,915.99
MAJ.OBJ: 97 - OTHER OUTGO	0.00	1,509.73	166,717.29	636,526.00	469,808.71
LOC.GRP: 2 - FRESNO CITY COLLEGE	2,537,752.59	5,456,228.33	42,478,433.25	65,139,609.00	20,123,423.16

STATE CENTER COMMUNITY COLLEGE DISTRICT
 Annual Budget Report Ending 03/31/00
 Options - All Statuses

04-19-00
 Fiscal Year: 2000

LOC.GRP: 3 - REEDLEY COLLEGE

GL Account	YTD Encumbrances	MTD Actual	YTD Actual	Annual Budget	Available % Avail
MAJ.OBJ: 91 - ACADEMIC SALARIES	0.00	902,553.28	6,682,027.50	9,230,712.00	2,548,684.50
MAJ.OBJ: 92 - CLASSIFIED SALARIES	0.00	324,635.03	2,678,379.24	3,673,967.00	995,587.76
MAJ.OBJ: 93 - EMPLOYEE BENEFITS	0.00	208,645.04	1,725,582.70	2,438,741.00	713,158.30
MAJ.OBJ: 94 - SUPPLIES & MATERIALS	249,223.80	115,062.26	580,234.00	988,858.00	159,400.20
MAJ.OBJ: 95 - OTHER OPER EXP & SERVICE	308,788.39	164,738.50	1,166,585.88	2,563,686.00	1,088,311.73
MAJ.OBJ: 96 - CAPITAL OUTLAY	262,731.36	68,080.63	739,423.36	2,530,325.00	1,528,170.28
MAJ.OBJ: 97 - OTHER OUTGO	0.00	0.00	70,700.00	199,202.00	128,502.00
=====	=====	=====	=====	=====	=====
LOC.GRP: 3 - REEDLEY COLLEGE	820,743.55	1,783,714.74	13,642,932.68	21,625,491.00	7,161,814.77
=====	=====	=====	=====	=====	=====
LOC.GRP: 3 - REEDLEY COLLEGE					33.12

STATE CENTER COMMUNITY COLLEGE DISTRICT
Annual Budget Report Ending 03/31/00
Options - All Statuses

LOC.GRP: 4 - MADERA CENTER

GL Account	YTD Encumbrances	MTD Actual	YTD Actual	Annual Budget	Available & Avail
MAJ.OBJ: 91 - ACADEMIC SALARIES	0.00	177,371.91	1,240,580.61	1,626,483.00	385,902.39
MAJ.OBJ: 92 - CLASSIFIED SALARIES	0.00	37,458.05	328,247.62	455,273.00	127,025.38
MAJ.OBJ: 93 - EMPLOYEE BENEFITS	0.00	35,632.32	290,242.46	405,516.00	115,273.54
MAJ.OBJ: 94 - SUPPLIES & MATERIALS	43,445.08	20,361.41	125,476.12	175,031.00	6,109.80
MAJ.OBJ: 95 - OTHER OPER EXP & SERVICE	43,465.62	9,292.02	139,434.68	272,259.00	89,358.70
MAJ.OBJ: 96 - CAPITAL OUTLAY	34,289.12	105,555.60	198,271.85	246,399.00	13,838.03
MAJ.OBJ: 97 - OTHER OUTGO	0.00	0.00	0.00	436,490.00	436,490.00
=====	=====	=====	=====	=====	=====
LOC.GRP: 4 - MADERA CENTER	121,199.82	385,671.31	2,322,253.34	3,617,451.00	1,173,997.84
=====	=====	=====	=====	=====	=====
					32.45

STATE CENTER COMMUNITY COLLEGE DISTRICT
 Annual Budget Report Ending 03/31/00
 Options - All Statuses

04-19-00
 Fiscal Year: 2000

LOC.GRP: 5 - CLOVIS CENTER

GL Account	YTD Encumbrances	MTD Actual	YTD Actual	Annual Budget	Available & Avail
MAJ.OBJ: 91 - ACADEMIC SALARIES	0.00	190,108.66	1,246,818.34	1,373,652.00	126,833.66
MAJ.OBJ: 92 - CLASSIFIED SALARIES	0.00	30,312.74	221,469.50	260,396.00	38,926.50
MAJ.OBJ: 93 - EMPLOYEE BENEFITS	0.00	31,610.84	230,742.53	308,499.00	77,756.47
MAJ.OBJ: 94 - SUPPLIES & MATERIALS	30,056.50	10,098.27	53,462.98	86,300.00	2,780.52
MAJ.OBJ: 95 - OTHER OPER EXP & SERVICE	20,968.39	19,375.30	135,206.54	172,250.00	16,075.07
MAJ.OBJ: 96 - CAPITAL OUTLAY	9,581.13	8,345.98	13,886.06	68,300.00	44,832.81
	60,606.02	289,851.79	1,901,585.95	2,269,397.00	307,205.03
LOC.GRP: 5 - CLOVIS CENTER					13.54

GL Account	YTD Encumbrances	MTD Actual	YTD Actual	Annual Budget	Available & Avail
MAJ.OBJ: 91 - ACADEMIC SALARIES	0.00	46,969.38	281,731.45	281,739.00	7.55
MAJ.OBJ: 92 - CLASSIFIED SALARIES	0.00	3,165.07	24,099.56	25,500.00	1,400.44
MAJ.OBJ: 93 - EMPLOYEE BENEFITS	0.00	3,593.05	24,833.61	29,920.00	5,086.39
MAJ.OBJ: 94 - SUPPLIES & MATERIALS	1,709.44	1,562.03	3,794.21	35,300.00	29,796.35
MAJ.OBJ: 95 - OTHER OPER EXP & SERVICE	11,281.37	2,776.37	27,055.96	78,200.00	39,862.67
MAJ.OBJ: 96 - CAPITAL OUTLAY	0.00	0.00	783.52	9,600.00	8,816.48
LOC.GRP: 6 - OAKHURST CENTER	12,990.81	58,065.90	362,298.31	460,259.00	84,969.88
					18.46

STATE CENTER COMMUNITY COLLEGE DISTRICT
1525 E. Weldon
Fresno, California 93704

PRESENTED TO BOARD OF TRUSTEES

DATE: May 2, 2000

SUBJECT: Consideration of Bids
Miscellaneous Concrete Improvements,
Reedley College and Fresno City College

ITEM NO. 00-113

EXHIBIT: None

Background:

Bid #9900-39 is for concrete improvements at various locations at the Reedley College and Fresno City College campuses. Included in this project is the removal and replacement of sidewalks, ramps and curbs and gutters at Reedley College, and the removal and replacement of pool decks and stadium concrete embankments at Fresno City College. Also included are various other smaller concrete projects as well as landscape and irrigation improvements required in conjunction with the concrete improvements. The bid was structured in such a way as to provide unit costs for the work required to allow the work to remain within budget parameters.

Funding for this project will be provided by a combination of 99/00 Decision Package funds, general funds previously approved by the Board, and 1998/99 carryover monies. The engineer's estimate for the complete work of this project is \$152,000.00. Bid prices shown are for the full project costs as well as those identified for award. Bids were received from four (4) contractors as follows: Proposals were received from three (3) contractors as follows:

<u>Bidder</u>	<u>Bid Amount</u>	<u>Award Amount</u>
Patch Master of Central Calif.	\$177,639.83	\$137,404.34
Scheidt, Haydon and Hall, Inc.	\$185,577.00	\$141,241.34
Stan Phillips Concrete	\$188,529.00	\$150,496.69

Recommendation:

It is recommended that the Board of Trustees award Bid #9900-39 in the amount of \$137,404.34 to Patch Master of Central Calif., the lowest responsible bidder for the Miscellaneous Concrete Improvements at Reedley College and Fresno City College, and authorize the Chancellor or Vice Chancellor-Business to sign an Agreement on behalf of the District.

STATE CENTER COMMUNITY COLLEGE DISTRICT
1525 E. Weldon
Fresno, California 93704

PRESENTED TO BOARD OF TRUSTEES

DATE: May 2, 2000

SUBJECT: Consideration of Bids
Relocatable Addition,
Vocational Training Center

ITEM NO. 00-114

EXHIBIT: None

Background:

At the January meeting, the Board of Trustees approved the piggyback purchase of a child care portable classroom and two general use portable classrooms for the Vocational Training Center. Bid 9900-33 is for the necessary site development to allow for the placement of these relocatable classrooms. Included in this project is the preparation of the building pads, electrical and signal system improvements, and additional plumbing and landscaping improvements. Scheduling of this project will allow for placement of these relocatable classrooms during the summer months prior to the start of the fall semester. This bid was necessitated by the need for additional and upgraded classroom facilities at the Vocational Training Center.

Funding for this project will be provided by Partnership for Excellence monies from Fresno City College. The engineer's estimate for this project is \$86,099.00. Bids were received from three (3) contractors as follows:

<u>Bidder</u>	<u>Award Amount</u>
Halder Construction	\$ 92,276.00
Durham Construction Company	\$ 94,836.00
Stan Phillips Concrete	\$103,276.00

Recommendation:

It is recommended that the Board of Trustees award Bid #9900-33 in the amount of \$92,276.00 to Halder Construction, the lowest responsible bidder for the Relocatable Addition at the Vocational Training Center, and authorize the Chancellor or Vice Chancellor-Business to sign an Agreement on behalf of the District.

STATE CENTER COMMUNITY COLLEGE DISTRICT
1525 E. Weldon
Fresno, California 93704

PRESENTED TO BOARD OF TRUSTEES

DATE: May 2, 2000

SUBJECT: Consideration of Bids
Relocatable Addition,
Reedley College

ITEM NO. 00-115

EXHIBIT: None

Background:

At the January meeting, the Board of Trustees approved the piggyback purchase of a portable computer lab and two general use portable classrooms for the Reedley College Campus. The placement of these relocatable classrooms will create a total of five new classrooms. Bid 9900-34 provides for the necessary site development to allow for the placement of these relocatable buildings. Included in this project is the preparation of the building pads, electrical and signal system improvements, and necessary landscaping improvements. Scheduling of this project will allow for placement of these relocatable classrooms during the summer months. This bid was necessitated by the need for additional classroom facilities at the Reedley College Campus.

Funding for this project will be provided by 1998/99 carryover monies from Reedley College. The engineer's estimate for this project is \$89,785.00. Bids were received from four (4) contractors as follows:

<u>Bidder</u>	<u>Award Amount</u>
Mark Wilson Construction, Inc.	\$78,800.00
Durham Construction Company	\$79,390.00
Halder Construction	\$89,123.00
Stan Phillips Concrete	\$94,450.00

Recommendation:

It is recommended that the Board of Trustees award Bid #9900-34 in the amount of \$78,800.00 to Mark Wilson Construction, Inc., the lowest responsible bidder for the Relocatable Additions at Reedley College, and authorize the Chancellor or Vice Chancellor-Business to sign an Agreement on behalf of the District.

STATE CENTER COMMUNITY COLLEGE DISTRICT
1525 E. Weldon
Fresno, California 93704

PRESENTED TO BOARD OF TRUSTEES

DATE: May 2, 2000

SUBJECT: Consideration of Bids
Forestry Building Remodel,
Reedley College

ITEM NO. 00-116

EXHIBIT: None

Background:

Bid 9900-40 provides for the remodeling of existing space in the Forestry building at Reedley College. The work of this project will create five additional faculty offices and includes selective demolition and the construction of new partitions, doors, frames and finishes. Also included are modifications of existing fire alarm, mechanical and electrical systems and other interior and exterior renovations. This bid was necessitated by the need for additional faculty offices at the Reedley College Campus.

Funding for this project will be provided by 1998/99 carryover monies from Reedley College. The engineer's estimate for this project is \$70,008.00. Bids were received from five (5) contractors as follows:

<u>Bidder</u>	<u>Award Amount</u>
Mark Wilson Construction, Inc.	\$49,500.00
D & S Construction, Inc.	\$55,800.00
Durham Construction Company	\$57,800.00
Halder Construction	\$58,740.00
Dale Atkins Contractor	\$85,400.00

Recommendation:

It is recommended that the Board of Trustees award Bid #9900-40 in the amount of \$49,500.00 to Mark Wilson Construction, Inc., the lowest responsible bidder for the Forestry Building Remodel at Reedley College, and authorize the Chancellor or Vice Chancellor-Business to sign an Agreement on behalf of the District.

STATE CENTER COMMUNITY COLLEGE DISTRICT
1525 E. Weldon
Fresno, California 93704

PRESENTED TO BOARD OF TRUSTEES

DATE: May 2, 2000

SUBJECT: Consideration of Bids
Selection of Web Site Designer,
Districtwide

ITEM NO. 00-117

EXHIBIT: None

Background:

In December 1999, proposals were solicited for the redesign of the various web sites utilized by the District. Using the Reedley College web site as a model, the goal of RFP 9900-19 was to enhance and expand the web sites at the District Office, Fresno City College, Reedley College and the North Centers. Design firms were required to submit their ideas for increasing the visibility of the District with a graphic statement that stands out and represents the District's traditions, innovation, and long standing in the national and international educational community.

This new design is required to provide a common look and feel across all District sites while providing the necessary customization for each individual site. It must support all college services and accommodate future interactive services such as college applications, bookstore and other e-commerce applications, and web based instruction. This redesign will also link seamlessly with Datatel Web Advisor to provide functionality to allow students to register, review course availability, grades, financial aid information, request transcripts and admission applications and perform self service degree applications.

Proposals were evaluated by a web site selection committee consisting of representatives from the colleges and centers. Design firms were required to appear before the committee to present their proposals and ideas to develop efficient, attractive, easy to follow and accessible web pages for the designated District locations. Proposals were evaluated from a technical, educational, administrative and marketing perspective. Based upon these evaluations, a recommendation was made to award to The Madison Avenue Group, Inc. The proposal from the Madison Avenue Group was most closely aligned with the requirements of the Request for Proposal and was determined to be cost effective.

Funding for this project will be provided by the General Fund.

Five (5) proposals were received from four (4) design firms as follows:

<u>Bidder</u>	<u>Bid Amount</u>
The Madison Avenue Group, Inc.	\$ 83,750.00
MCICK2	\$ 59,870.00
MCICK2	\$179,930.00
SmarTech	\$197,000.00
Pen Lizard Design	\$229,200.00

Recommendation:

It is recommended that the Board of Trustees award RFP 9900-19, Selection of Web Site Designer, Districtwide, in an amount not to exceed \$83,750.00, and authorize an agreement to be finalized and signed by the Chancellor or Vice Chancellor-Business on behalf of the District.

STATE CENTER COMMUNITY COLLEGE DISTRICT
1525 E. Weldon
Fresno, California 93704

PRESENTED TO BOARD OF TRUSTEES

DATE: May 2, 2000

SUBJECT: Consideration of Resolution Certifying
California Environmental Quality Act
Compliance for Madera Center Project

ITEM NO. 00-118

EXHIBIT: Compliance Report and Resolution

Background:

In 1995 an Environmental Impact Report for the Madera State Center Community College Specific Plan, which included the Madera Center Master Plan, was prepared for Madera County. Subsequent to the dissemination of the Environmental Impact Report (EIR) and Responses, the Madera County Board of Supervisors certified the Specific Plan EIR in November 1995. Because Madera County was the Lead Agency for the Specific Plan Project, it was also responsible for preparing and processing the Specific Plan EIR.

In addition to the original Environmental Impact Report, the District prepared a Mitigated Negative Declaration relating to the Phase 1A Project primarily because the off-site improvements, including the sewer route, were a deviation from the original Environmental Impact Report. This Mitigated Negative Declaration was ultimately adopted by the SCCC Board of Trustees on January 13, 1998.

State CEQA Guidelines provide that an EIR or Negative Declaration is required for a project. This means the certified Specific Plan EIR and the adopted Phase 1 Mitigated Negative Declaration comprise the required CEQA compliance documentation for Phase 1B and subsequent development phases unless the conditions deviate from those identified in either document.

Governmental agencies, as such, are not required to file a Notice of Determination with the State Clearinghouse but rather file their EIR documents through the County recording process. Since Madera County was the original EIR Lead Agency, they filed the appropriate documents with the local County Recorder's Office; however, a Notice of Determination was never filed with the State Clearinghouse as is required for education projects. Therefore, in order to have State Clearinghouse approval for Phase 1B and subsequent projects, it is necessary to adopt a Resolution recognizing the environmental effects of the projects, as shown in the Specific Plan EIR, and to subsequently file a Notice of Determination for Phase 1B and future Master Plan Projects.

Recommendation:

It is recommended that the Board of Trustees accept the Compliance Report and approve the Resolution Certifying California Environmental Quality Act Compliance for the Madera Center Project.

State Center Community College District
MADERA CENTER
CALIFORNIA ENVIRONMENTAL QUALITY ACT
COMPLIANCE REPORT

April 19, 2000

I. Background, Purpose, and Scope

A. Background

The State Center Community College District (SCCCD) is developing the Madera Center on a 14-acre site located south of the City of Madera, on the north side of Avenue 12, between Roads 30 and 30½, and approximately one mile east of Highway 99, in Madera County, California. The Madera Center is master planned to accommodate 6,000 students from Madera County and northern Fresno County. The center is developing in phases as warranted by enrollment growth and as funding resources allow. The initial classroom and support facilities opened in 1996. Construction of additional classroom and support facilities is underway and planning for subsequent facilities has begun.

B. Purpose and Scope

Development of the Madera Center is subject to environmental review under the California Environmental Quality Act¹ (CEQA) and the Guidelines for Implementation of the California Environmental Quality Act² (State CEQA Guidelines). The purposes of this report are:

- To describe the CEQA compliance actions the SCCCDD has completed for the Madera Center;
- To describe additional CEQA compliance actions the SCCCDD must complete for pending and future development phases; and
- To provide the documentation required for the additional CEQA compliance actions.

II. Completed CEQA Actions

A. Introduction

The Madera Center has been environmentally assessed in two CEQA documents: the *Environmental Impact Report for the Madera State Center Community College Specific Plan* (SCH# 93082100) and the *State Center Community College District Madera Center Campus Phase One Project Mitigated Negative and Initial Study* (SCH# 97112043).

¹ Public Resources Code, Division 13, Sections 21000-21177

² California Code of Regulations, Title 14, Division 6, Chapter 3, Sections 15000-15387 and Appendices A-K

B. Specific Plan EIR

The *Environmental Impact Report for the Madera State Center Community College Specific Plan (Specific Plan EIR)* was prepared for Madera County by Michael Brandman Associates in 1995. The specific plan project evaluated in the EIR encompassed 1,867 acres located south of the City of Madera, including the Madera Center site. The land uses proposed for the specific plan area included residential, commercial, office, light industrial, schools, parks, and the Madera Center.

As described in the *Specific Plan Draft EIR*, "one of the roles of this document is to serve as the project EIR for the Madera County campus of the State Center Community College District. The campus is a key development within the Plan Area" (3.12). State CEQA Guidelines Section 15161 defines a project EIR as one that "...examines the environmental impacts of a specific development project" and focuses "... primarily on the changes in the environment that would result from development of the project. The EIR shall examine all phases of the project including planning, construction, and operation."

The *Specific Plan EIR* evaluated the Madera Center at a project level based on a master plan prepared by the SCCCDC in 1993. As described in the *Draft Specific Plan EIR*:

The campus is planned to occupy approximately 115 acres north of Avenue 12 and east of Road 30. It would serve the growing population in the northern end of the District, i.e., Madera County and northern Fresno County. Ultimately, the campus would support 320,000 square feet of development with an enrollment of 6,000 students, of which 3,600 are projected to be day students. Parking would be provided for 2,000 cars. Direct employment at the college is estimated to constitute 270 full time equivalent positions, including faculty, staff, and administrative employees. Indirect employment generated in the community is estimated to be 526 positions (Mass, Rao, Taylor and Associates 1992). The academic programs of the college are planned to consist of transfer/general education (courses transferable to the University of California or California State University systems), occupational education, developmental education with courses in math and English communication, and physical education/athletics (State Center Community College District 1993). (3-12 – 3-15)

The Madera County Board of Supervisors certified the *Specific Plan EIR* on November 7, 1995 and adopted the specific plan on the same date.

Madera County was responsible for preparing and processing the *Specific Plan EIR* because it was the Lead Agency for the specific plan project. It was the government agency with primary responsibility for approving the specific plan.

The SCCCDC participated in the *Specific Plan EIR* process as a Responsible Agency. Under CEQA, a Responsible Agency is a public agency that proposes to carry out or approve a project for which a Lead Agency is preparing an EIR. In this case, the SCCCDC was proposing to carry out the Madera Center project, which was a component of the specific plan project, and for which Madera County was the Lead Agency and was preparing an EIR.

C. Phase One Mitigated Negative Declaration

The *State Center Community College District Madera Center Campus Phase One Project Mitigated Negative Declaration and Initial Study* was prepared for the SCCC by Michael Paoli & Associates in 1997. The Madera Center improvements addressed in the *Phase One Mitigated Negative Declaration* were, in actuality, the second phase of development at the Madera Center. The Initial Phase, which was completed in 1996, encompassed a permanent multi-use student services building, eleven portable buildings housing classrooms and offices, a temporary maintenance building, and a landscaped, 368-space parking lot with access from Avenue 12. The SCCC relied on the *Specific Plan EIR* as the CEQA documentation for the Initial Phase.

The Phase One project encompassed a number of on- and off-site improvements, all of which have been completed or are under construction. Major on-site facilities included an approximately 25,000-square foot permanent classroom/office building; a permanent central plant building for boilers, chillers and main electrical panels; a temporary 450-space parking lot, and open playfields and athletic fields.

Phase One off-site work included constructing streets improvements along the Avenue 12 frontage of the site and the sewer main and related facilities necessary to connect the Madera Center to the City of Madera sewer system.

The *Phase One Mitigated Negative Declaration* was adopted by the SCCC Board of Trustees in January 1998. The Mitigated Negative Declaration and Initial Study incorporated the *Specific Plan EIR* by reference.

The SCCC prepared the *Phase One Mitigated Negative Declaration* in addition to referencing the *Specific Plan EIR* for two reasons. First, modifications had been made to the campus master plan since the EIR was prepared. Second, the SCCC determined that the EIR did not adequately address certain aspects of the sewer connection to the City of Madera.

III. Proposed Phase 1B

The SCCC is continuing to develop the Madera Center following the modified master plan evaluated in the *Specific Plan EIR* and *Phase One Mitigated Negative Declaration*. Preliminary plans for the proposed next phase of development, referred to as the Madera Center Phase 1B Project (Phase 1B Project), are under development. The Phase 1B Project encompasses construction of Building 11 in Academic Village One and related utility service and site development improvements. Phase 1B also includes interior modifications to Classroom and Academic Services Building 31.

Building 11 would have an outside gross area of approximately 49,300 square feet (31,740 assignable square feet). It would be a two-story structure containing general classrooms, science laboratory classrooms, and faculty offices.

IV. Additional CEQA Actions

A. Use of EIR and Mitigated Negative Declaration for Phase 1B and Subsequent Project Phases

The State CEQA Guidelines provide that only one EIR or Negative Declaration is required for a project unless conditions specified in Sections 15162(a)(1)-(3) occur the EIR has been certified or the Negative Declaration adopted. For the Madera Center, this means the certified *Specific Plan EIR* and the adopted *Phase One Mitigated Negative Declaration* comprise the required CEQA compliance documentation for Phase 1B and for subsequent development phases unless the conditions in Sections 15162(a)(1)-(3) occur. The conditions, and the relationship of Phase 1B to them, are as follows:

- *Substantial changes are proposed in the project which will require major revisions of the previous EIR or negative declaration due to the involvement of new significant environmental effects or a substantial increase in the severity of previously identified significant effects. (Section 15162(a)(1))*

The SCCCDC has made only minor modifications to the Madera Center master plan since the plan was prepared and evaluated in the *Specific Plan EIR*. None of modification would involve new significant environmental effects or a substantial increase in the severity of any previously identified significant effects. The modifications were addressed in the *Phase One Mitigated Negative Declaration*. As described in the Phase One Initial Study, "the master plan has been updated since the EIR was completed in 1995 to reflect the actual site area and configuration and a more detailed analysis of educational program needs and facilities requirements. The overall master plan concept, however, remains the same as described in the *Specific Plan Draft EIR...*" (A-2)

- *Substantial changes occur with respect to the circumstances under which the project is undertaken which will require major revisions of the previous EIR or negative declaration due to the involvement of new significant environmental effects or a substantial increase in the severity of previously identified significant effects. (Section 15162(a)(2))*

No substantial changes have occurred with respect to the circumstances under which the Madera Center is being developed since the *Specific Plan EIR* was certified or *Phase One Mitigated Negative Declaration* was adopted. Physical conditions on the Madera Campus site have not changed with the exception of development that has taken place following the master plan. The SCCCDC monitors land use and planning activity in the specific plan area surrounding the campus and is not aware of any changes in the physical or human environment of this area or in the public land use planning or environmental policy for the area.

- *New information of substantial importance, which was not known and could not have been known with the exercise of reasonable diligence at the time the previous EIR was certified as complete or the negative declaration was adopted, shows any of the following: (Section 15162(a)(3))*

(A) *The project will have one or more significant effects not discussed in the*

previous EIR or negative declaration;

- (B) *Significant effects previously examined will be substantially more severe than shown in the previous EIR;*
- (C) *Mitigation measure or alternatives previously found not to be feasible would in fact be feasible, and would substantially reduce one or more significant effects of the project, but the project proponents decline to adopt the mitigation measure or alternative; or*
- (D) *Mitigation measure or alternatives which are considerably different from those analyzed in the previous EIR would substantially reduce one or more significant effects on the environment, but the project proponents decline to adopt the mitigation measure or alternative.*

As previously described, the SCCCD monitors land use and planning activity for the specific plan area. This monitoring has not resulted in the identification of any new information that shows any of conditions described in subsections (A) – (D).

B. SCCCD Actions

State CEQA Guidelines Section 15096(a) specifies, “a Responsible Agency complies with CEQA by considering the EIR or negative declaration prepared by the Lead Agency and by reaching its own conclusions on whether and how to approve the project involved.” Section 15096 also specifies the duties of a Responsible Agency. These duties, as they relate to the SCCCD’s role as a Responsible Agency for the *Specific Plan EIR*, are as follows:

- Participate in the preparation of the *Specific Plan EIR* by providing background information on the Madera Center, attending meetings to discuss the scope and content of the EIR, and reviewing and commenting on the EIR. (Sections 15096(b)-(d))
- Prior to reaching a decision on the Madera Center project, the SCCCD must consider the environmental effects of the project as shown in the *Specific Plan EIR*. (Section 15096(f))
- When considering alternatives or mitigation measures, the SCCCD is responsible for mitigating or avoiding only the direct or indirect environmental effects of those parts of the project that it decides to carry out, finance, or approve. (Section 15096(g)(1))
- The SCCCD cannot approve the project if it finds any feasible alternative or feasible mitigation measures within its powers that would substantially lessen or avoid any significant effect the project would have on the environment. (Section 15096(g)(2))
- The SCCCD must make the findings required by Section 15091 for each significant effect of the project and must make the findings in Section 15093 if necessary. (Section 15096(h))
- The SCCCD should file a Notice of Determination for the project. (Section 15096(i))

The SCCCDC participated in the preparation of the *Specific Plan EIR* as required by Sections 15096(b)-(d)), but has not completed the actions specified in Sections 15096(f)-(i). To address this situation, the District will complete the required actions when considering the approval of Phase 1B. The *Specific Plan EIR* and *Phase One Mitigated Negative Declaration*, thereafter, will serve as the CEQA documentation for Phase 1B and for subsequent phases of Madera Center development unless the conditions described in Sections 15162(a)(1)-(3) occur.

C. Documentation for Required Actions

The actions the SCCCDC Board of Trustees must take to comply with CEQA for Phase 1B and subsequent phases are presented in a resolution enclosed with this report. The resolution includes the following exhibits, each of which provides documentation necessary to support the actions:

- Exhibit A contains the Executive Summary from the *Specific Plan EIR*. Topics addressed in the summary include the project description, areas of controversy/issues to be resolved, alternatives, and significant environmental impacts and mitigation measures.
- Exhibit B presents the *Findings Regarding Significant Impacts, Project Alternatives, and Statement of Overriding Consideration for the State Center Community College Specific Plan* that were adopted by the Madera County Board of Supervisors when the *Final Specific Plan Final EIR* was certified. The Madera Center was evaluated at a project level in the *Specific Plan EIR* and, therefore, the findings are applicable to the Madera Center project.
- Exhibit C lists the mitigation measures for the Madera Center project. The mitigation measures presented are based on the measures adopted by the Madera County Board of Supervisors for the *Specific Plan EIR*. As provided in State CEQA Guidelines Section 15096, the SCCCDC, as a Responsible Agency for the *Specific Plan EIR*, "...has responsibility for mitigating or avoiding only the direct or indirect environmental effects of those parts of the project which it decides to carry out, finance, for approve." Therefore, the mitigation measures presented in Exhibit C are limited to those that relate to direct or indirect environmental effects of the Madera Center project. In some cases, the wording of the mitigation measures has been modified to fit the circumstances of the Madera Center project; however, the basic intent of the measures has not been changed.
- Exhibit D provides the Mitigation Monitoring and Reporting Program the SCCCDC must adopt pursuant to State CEQA Guidelines Section 15097 to ensure the adopted mitigation measures are implemented in the project design, construction and operation.

RESOLUTION NO. 00-118

**RESOLUTION CERTIFYING CALIFORNIA ENVIRONMENTAL QUALITY
ACT COMPLIANCE FOR MADERA CENTER PROJECT**

WHEREAS, the State Center Community College District (SCCCD) is developing the Madera Center project in Madera County; and

WHEREAS, the Madera Center project is subject to the requirements of the California Environmental Quality Act (CEQA); and

WHEREAS, the Madera Center project was evaluated at a project level in the *Environmental Impact Report for the Madera State Center Community College Specific Plan (State Center EIR)* prepared by Madera County; and

WHEREAS, on November 7, 1995, the Madera County Board of Supervisors adopted Resolution No. 95-290, a resolution certifying the *State Center EIR* and approving the *State Center Community College Specific Plan* and general plan amendment with findings and conditions; and

WHEREAS, Madera County was the Lead Agency for the *State Center EIR* and the SCCCDC was a Responsible Agency; and

WHEREAS, State CEQA Guidelines Section 15096(a) provides that a Responsible Agency complies with CEQA by considering the EIR or negative declaration prepared by the Lead Agency and by reaching its own conclusion on whether and how to approve the project involved; and

WHEREAS, State CEQA Guidelines Section 15096(f) requires that the SCCCDC, as a Responsible Agency, consider the environmental effects of the Madera Center project as shown in the *State Center EIR* prior to reaching a decision on the project; and

WHEREAS, State CEQA Guidelines Section 15096(g) provides that the SCCCDC shall not approve the Madera Center project if it finds any feasible alternative or feasible mitigation measures within its powers that would substantially lessen or avoid any significant effect the project would have on the environment; and

WHEREAS, State CEQA Guidelines Section 15096(h) provides that the SCCCDD shall make the findings in Section 15091 for each significant effect of the project and shall make the findings in Section 15093 if necessary; and

WHEREAS, State CEQA Guidelines Section 15097 requires that the SCCCDD adopt a Mitigation Monitoring and Reporting Program to ensure the mitigation measures and project revision identified in the *State Center EIR* that pertain to the Madera Center project are implemented; and

WHEREAS, State CEQA Guidelines Section 15162(a) provides that when an EIR has been certified or a negative declaration adopted for a project, no subsequent EIR shall be prepared for that project unless (1) substantial changes are proposed in the project, (2) substantial changes occur with respect to the circumstances under which the project is undertaken, or (3) new information of substantial importance related to significant effects, mitigation measures, or alternatives becomes available; and

WHEREAS, in January 1998, the SCCCDD Board of Trustees (Board) adopted a Mitigated Negative Declaration for the Madera Center Phase One Project; and

WHEREAS, the actions and findings encompassed by this resolution are based upon the record in this matter. The record consists of (1) the *Final Environmental Impact Report for the Madera State Center Community College Specific Plan*; (2) the *Madera State Center College Specific Plan*; (3) all materials contained in the EIR files and specific plan files on file with the Madera County Planning Department and the Clerk of the Madera County Board; (4) all materials contained in SCCCDD files on the Madera Center project; (5) the Mitigated Negative Declaration for the Madera Center Phase One Project; (6) the Madera Center CEQA Compliance Report; and (7) any oral or written testimony presented at the SCCCDD Board meeting at which this resolution was considered.

IT IS HEREBY RESOLVED as follows:

1. The Board certifies that it has considered the environmental effects of the Madera Center project as shown in the *State Center EIR*. A summary of these effects from the Draft EIR is set forth in Exhibit A, which is attached hereto and incorporated

herein by this reference.

2. The Board finds and declares that no subsequent EIR or Mitigated Negative Declaration shall be prepared for Phase 1B of the Madera Center project because (a) no substantial changes have occurred in the project, (b) no substantial changes have occurred with respect to the circumstances under which the project is being undertaken, and (c) no new information of substantial importance related to significant effects, mitigation measures, or alternatives has become available.

3. The Board finds and declares that no subsequent EIR or Mitigated Negative Declaration shall be prepared for phases of the Madera Center project subsequent to Phase 1B unless required pursuant to State CEQA Guidelines Section 15162.

4. The Board finds and declares that the *State Center EIR* identified significant impacts in the areas of air quality, noise, land use, water, and aesthetics/light and glare. Measures to lessen impacts in these areas have been included in the *Madera State Center Community College Specific Plan*; however, the impacts in these areas remain significant. Because these impacts remain significant even after implementation of relevant measures designed to mitigate these impacts, they are considered significant adverse effects that cannot be avoided if the specific plan, including the Madera Center project, is implemented. In that respect, the Board hereby adopts the Findings Regarding Significant Impacts, Project Alternatives, and Statement of Overriding Consideration set forth in Exhibit B, which is attached hereto and incorporated herein by this reference. The Board finds that the specific social, economic, and other benefits of the project as set forth in Exhibit B and other reasons set forth therein make infeasible the project alternatives identified in the EIR, that said benefits outweigh the remaining significant adverse effects, and, therefore, justify approval of the Madera Center project.

5. With respect to the mitigation measures identified in the *Specific Plan EIR*, the Board determines that the measures set forth in Exhibit C, which is attached hereto and incorporated herein by this reference, are applicable to the Madera Center project and shall be incorporated in the project, including Phase 1B and subsequent phases of the project.

6. The Board hereby adopts the Mitigation Monitoring and Reporting Program set forth in Exhibit D, which is attached hereto and incorporated herein by this reference.

7. The Board hereby directs the Vice Chancellor-Business or his designee to file a Notice of Determination for the Madera Center project.

* * * * *

The foregoing Resolution was adopted upon motion of Trustee _____, seconded by Trustee _____, at a regular meeting of the Board of Trustees of the State Center Community College District on this ____ day of April, 2000, by the following vote, to wit:

AYES:

NOES:

ABSENT:

Ron Manfredi, President
Board of Trustees
State Center Community College District

Resolution No. 00-118

EXHIBIT A

Summary of Environmental Effects

The Executive Summary from the *Draft Environmental Impact Report for the State Center Community College Specific Plan* is presented in this Exhibit A beginning on page A-2. Topics addressed in the summary include the project description, areas of controversy/issues to be resolved, alternatives, and significant environmental impacts and mitigation measures.

SECTION 2 EXECUTIVE SUMMARY

2.1 INTRODUCTION

The Madera State Center Community College Specific Plan project encompasses approximately 1,867 acres located in the valley region of Madera County, just southeast of the City of Madera. The Plan Area is located approximately seven miles north of the Fresno County border and San Joaquin River along State Route (SR) 99. SR 99 and the Southern Pacific Railroad form the western boundary of the Plan Area. The Santa Fe Railroad generally defines the eastern boundary of the Plan Area. Avenue 13 is the northern project boundary and the Plan Area extends slightly south of Avenue 12.

Currently, the Plan Area supports primarily agricultural uses including vineyards and orchards. The Plan Area also includes 22 residences, and some commercial and industrial uses on Road 29 and near the SR 99 corridor. The primary natural feature within the Plan Area is Cottonwood Creek which supports high quality riparian vegetation, including mature stands of cottonwoods and willows.

2.2 PROJECT DESCRIPTION SUMMARY

The proposed Specific Plan has been prepared to be consistent with the Madera County General Plan designation for the Plan Area. The designation is "New Growth Area" (NGA) which requires an Area Plan to be prepared to specify the mix and density of future land uses in accordance with Madera County General Plan goals, policies, and implementation programs. The Specific Plan is proposed to serve as the Area Plan for the Madera State Center Community College NGA. The Specific Plan is required to be approved prior to changing the existing zoning designations in the Plan Area. Existing zoning designations include Agricultural Rural Exclusive - 20 Acre (ARE-20), Agricultural Rural Exclusive - 40 Acre (ARE-40), Commercial-Rural-General (CRG), Commercial-Rural Highway (CRH), Industrial Urban-Rural Heavy (IH), and Public Open Space (POS).

The Madera State Center Community College Specific Plan provides for a multi-use community focused around a community college facility. Land uses proposed in the Specific Plan include single family and multi-family residences, commercial and retail uses, professional office space, light industrial uses, the community college, public schools and parks, and other civic uses. At Buildout the proposed Specific Plan provides for 4,500 dwelling units, 14,000 residents, and 4,300 jobs.

A key development within the Plan Area is the proposed Madera County campus of the State Center Community College District. The campus is planned to serve the growing population in the northern end of the District, i.e., Madera County and northern Fresno County. Ultimately, the campus would support 320,000 square feet of development with an enrollment of 6,000 students. The academic programs of the college are planned to consist of transfer/general education (courses transferrable to the University of California or California State University systems), occupational education, developmental education with courses in math and English communication, and physical education/athletics (State Center Community College District 1993).

A community pathway network is proposed to interconnect uses within the Plan Area, and is intended to allow convenient travel within the Plan Area without the use of an automobile. A transit corridor and two transit stations are also planned to allow for current and future modes of transportation.

2.3 AREAS OF CONTROVERSY/ISSUES TO BE RESOLVED

The EIR addresses the areas of environmental controversy and environmental issues to be resolved which are known to the Madera County or were raised by agencies during the public review of the Notice of Preparation. The following summarizes the primary areas of controversy/issues to be resolved related to the proposed Specific Plan, and in which section these issues are addressed.

- ▶ Project compatibility with surrounding land uses (Section 4.5, Noise; 4.6, Land Use, and Section 4.10, Aesthetics/Light and Glare)
- ▶ Local and regional traffic (Section 4.9, Transportation and Circulation)
- ▶ Effects on biological resources (Section 4.8, Biological Resources)
- ▶ Increased noise levels associated with development of the Plan Area (Section 4.5, Noise)
- ▶ Increase air quality emissions (Section 4.4, Air Quality)

2.4 SUMMARY OF ALTERNATIVES

In accordance with §15126(d) of the CEQA Guidelines, Section 5, Alternatives of this EIR includes a comparative evaluation of the proposed project with alternatives to the project. Additionally, the alternatives were discussed in the terms of achieving the project objectives. This EIR includes an evaluation of the following alternatives to the Madera State Center Community College Specific Plan project:

- ▶ No Project Alternative
- ▶ Alternative Site (including alternative areas considered by the State Center Community College District for its new campus)
- ▶ Less Intense Development Alternative

Section 5, Alternatives, of this EIR provides descriptions and analysis of each alternative. The No Project Alternative would be the environmentally superior alternative. Among the other alternatives, the Less Intense Development Alternative would result in fewer environmental impacts, than the proposed project. Neither the No Project nor the Less Intense Development alternative would achieve the objectives of the project. The Alternative Site would result in the same significant and unavoidable environmental impacts than the proposed project and would meet all of the objectives of the project. However, because it is unlikely that the project applicant will be able to acquire 1,867 acres of contiguous land at an alternative site along the SR 99 corridor, or in one of the other areas considered for the college, this alternative is considered rejected as infeasible. Therefore, the proposed project is considered the preferred project among the alternatives

2.5 SUMMARY OF SIGNIFICANT ENVIRONMENTAL IMPACTS AND MITIGATION MEASURES

Section 4 describes the environmental impacts that would result from the implementation of the proposed Specific Plan. Table 2-1 presents a matrix that summarizes the impacts of the proposed Specific Plan and mitigation measures for these impacts. The matrix provides the following:

- ▶ A list of all identified environmental impacts of the proposed Specific Plan, organized by topic area.
- ▶ Determination of which impacts are significant before mitigation, as noted by the symbol "S" for "Significant" in the Level of Significance Before Mitigation (LSBM) column. Madera County must adopt CEQA Findings of Fact, pursuant to the State CEQA Guidelines, §15091, for impacts designated "S" in the LSBM column of Table 2-1.
- ▶ Identification of effects found not to be significant, as noted by the symbol: "LS" for "Less-Than-Significant."
- ▶ A list of all mitigation measures.
- ▶ Determination of the level of significance after mitigation, as noted by the symbol: "LS" for Less-Than-Significant (when impacts are already LS before mitigation), "MLS" for "Mitigated to Less-Than-Significant", or "SU" for "Significant and Unavoidable." "Level of Significance After Mitigation" (LSAM) column. Madera County must adopt a Statement of Overriding Considerations, pursuant to the State CEQA Guidelines §15093, for impacts designated "SU" in the LSAM column of Table 2-1.

**TABLE 2-1
SUMMARY OF REVISED PROJECT IMPACT AND MITIGATION MEASURES**

IMPACT	LSBM	MITIGATION	LSAM
4.2 EARTH RESOURCES			
4.2-1: Modification of Unique Geologic Features. No substantial geologic features are visible, or are known to exist in, the Plan Area and, consequently, less than significant impacts would occur with project implementation.	LS	No mitigation measures are required.	LS
4.2-2: Increased Exposure of Seismicity and Faulting. Earthquake potential and surface rupture in the Plan Area is considered to be low and, consequently, the proposed project would result in less-than-significant impacts related to exposure of people or structures to seismicity and faulting.	LS	No mitigation measures are required.	LS
4.2-3: Increased Exposure to Other Geologic Hazards. The Plan Area is anticipated to experience only low levels of groundshaking with a seismic event and, therefore, the corresponding risk of liquefaction would be considered low. Madera County has not experienced subsidence and the Plan Area is not expected to experience subsidence due to groundwater withdrawal. Consequently, the proposed project would result in less-than-significant impacts associated with liquefaction and subsidence.	LS	No mitigation measures are required.	LS
4.2-4: Alteration of Onsite Soils. The proposed project would result in less-than-significant soils impacts (refer also to Section 4.3, Hydrology and Water Quality, for a discussion of hydrologic impacts and Section 4.6, Land Use, for a discussion of impacts on agricultural soils).	LS	No mitigation measures are required.	LS

Legend
 LSBM = Level of significance before mitigation
 LSAM = Level of significance after mitigation
 MLS = Mitigated to a less-than-significant level
 SU = Significant and unavoidable
 LS = Less-than-significant without mitigation
 S = Significant before mitigation

**TABLE 2-1
SUMMARY OF REVISED PROJECT IMPACT AND MITIGATION MEASURES**

IMPACT	LSBM	MITIGATION	LSAM
<p>4.2-5: Increase in Cumulative Exposure to Geologic Hazards. The proposed project would not substantially contribute to an increased risk of people or structures to major geologic hazards and would, therefore, result in less-than-significant cumulative impacts.</p>	LS	No mitigation measures are required.	LS
<p>4.3 HYDROLOGY AND WATER QUALITY</p>			
<p>4.3-1: Alteration of Runoff Characteristics of the Plan Area. With the implementation of the proposed drainage system, including retention and detention basins, and conveyance facilities, runoff from the site would be discharged at levels comparable to the pre-project condition, which would be considered a less-than-significant impact.</p>	LS	No mitigation measures are required.	LS
<p>4.3-2: Drainage Impacts With Interim Development. Because no phasing plan has been identified for the proposed drainage improvements, drainage impacts to interim development are considered significant.</p>	S	<p>4.3-A: A flooding and drainage improvement phasing plan shall be prepared to address potential flood hazards to interim development of the Plan Area.</p>	MLS
<p>4.3-3: Change in Onsite Flood Hazards. Because the Plan Area flood plain is shallow (1 foot or less), onsite flood hazards would be adequately addressed by raised finished floor elevations and structural floodproofing; therefore, onsite flooding impacts would be less-than-significant.</p>	LS	No mitigation measures are required.	LS
<p>4.3-4: Changes to Upstream and Downstream Floodplains. Neither the flooding characteristics of Cottonwood Creek nor the flood hazards of upstream or downstream property would be changed by the Specific Plan, because Plan Area flood flows are contained in onsite retention basins; therefore, no impact to upstream or downstream flooding would occur.</p>	LS	No mitigation measures are required.	LS
<p>4.3-5: Increased Short-term Degradation of Surface Water Quality. The potential increase in sediment and toxins entering into Cottonwood Creek and flowing from the Plan Area would result in a significant short-term impact on surface water quality.</p>	S	<p>4.3-B: Reduce short-term degradation of surface water quality through the implementation of Best Management Practices in compliance with the National Pollution Discharge Elimination System (NPDES) permit.</p>	MLS

**TABLE 2-1
SUMMARY OF REVISED PROJECT IMPACT AND MITIGATION MEASURES**

IMPACT	LSBM	MITIGATION	LSAM
<p>4.3-6: Increase Long-term Degradation of Surface Water Quality. Due to the potential increases in typical urban runoff contaminants, long-term impacts on surface water quality is considered significant.</p>	S	<p>4.3-C: Reduce long-term degradation of surface water quality through the implementation of a Water Quality Management Plan.</p>	MLS
<p>4.3-7: Increased Volumes of Runoff and Reduced Recharge. The cumulative increase in runoff volumes and reduced groundwater recharge would be adverse, but less-than-significant.</p>	LS	<p>No mitigation measures are required.</p>	LS
<p>4.3-8: Cumulative Increase in Flooding. The project would not contribute to cumulative increases in flooding either upstream or downstream of the Plan Area, so cumulative flooding impacts of the project would be less-than-significant.</p>	LS	<p>No mitigation measures are required.</p>	LS
<p>4.3-9: Cumulative Increase in Surface Water Degradation. Because new development in the region would increase the loading of urban runoff contaminants into surface water, cumulative impacts on surface water quality would be considered significant.</p>	S	<p>4.3-B: Reduce short-term degradation of surface water quality through the implementation of Best Management Practices in compliance with the National Pollution Discharge Elimination System (NPDES) permit.</p> <p>4.3-C: Reduce long-term degradation of surface water quality through the implementation of a Water Quality Management Plan.</p>	MLS
<p>4.4 AIR QUALITY</p>			
<p>4.4-1: Construction Equipment Exhaust Emissions. In some instances, short-term construction exhaust emissions could be offset by the cessation of previously-existing agricultural equipment emissions. However, given that agricultural equipment emissions vary from year to year, pre-existing agricultural exhaust emissions are not deducted from projected construction exhaust emissions in order to ensure a conservative, or worst-case analysis</p>	S	<p>4.4-A: Construction equipment shall be tuned and operated in a manner that reduces exhaust emissions.</p>	SU

**TABLE 2-1
SUMMARY OF REVISED PROJECT IMPACT AND MITIGATION MEASURES**

IMPACT	LSBM	MITIGATION	LSAM
<p>4.4-2: Fugitive Dust Emissions. Because construction of land uses contemplated under the proposed Specific Plan could result in exceedances of the SJVUAPCD's thresholds for PM₁₀, which would also contribute to existing Basin-wide exceedances of PM₁₀ standards, fugitive dust generation would be a short-term potentially significant impact.</p>	S	<p>4.4-B: Fugitive dust suppression measures shall be implemented.</p>	SU
<p>4.4-3: Asphalt Paving Emissions. Because asphalt paving emissions of ROG are not expected to exceed the SJVUAPCD's threshold for that pollutant and would be required to comply with SJVUAPCD Rule 4641, asphalt paving emissions would be considered a short-term less-than-significant impact.</p>	LS	<p>No mitigation measures are required.</p>	LS
<p>4.4-4: Stationary Source Emissions. Because stationary source emissions associated with buildout of the Specific Plan would exceed the SJVUAPCD's threshold for NO_x, this would be considered a significant impact.</p>	S	<p>4.4-C: Energy-saving design features shall be incorporated into individual projects.</p>	SU
<p>4.4-5: Increased Regional Mobile Source Emissions. Because mobile source emissions generated by buildout of the Specific Plan would result in exceedances of the SJVUAPCD's thresholds for ROG, NO_x, PM₁₀, and CO and would contribute to the Basin-wide non-attainment for state and federal ozone and PM₁₀ standards, regional mobile source emissions would be a significant impact.</p>	S	<p>4.4-D: Transportation control measures shall be explored and implemented where feasible.</p>	SU
<p>4.4-6: Increased Local Mobile Source Emissions. Because existing background CO concentrations are low in the project vicinity and roadways are not projected to be congested (LOS E or worse) with project implementation, no adverse impacts from potential CO hot spots are anticipated from development under the proposed Specific Plan, and local mobile source impacts would be less-than-significant.</p>	LS	<p>No mitigation measures are required.</p>	LS

**TABLE 2-1
SUMMARY OF REVISED PROJECT IMPACT AND MITIGATION MEASURES**

IMPACT	LSBM	MITIGATION	LSAM
<p>4.4-7: Cumulative Stationary Source Emissions. Because buildout of the Specific Plan, in conjunction with cumulative development, would generate ROG and NO_x emissions related to the natural gas consumption and residential fireplace use in excess of the applicable SJVUAPCD thresholds for those pollutants, cumulative stationary source emissions would be significant.</p>	S	<p>4.4-C: Energy-saving design features shall be incorporated into individual projects.</p>	SU
<p>4.4-8: Cumulative Mobile Source Emissions. Because buildout of the Specific Plan, in conjunction with other reasonably foreseeable development in the project vicinity, would generate mobile source emissions in excess of SJVUAPCD thresholds for ROG, NO_x, PM₁₀, and CO, cumulative mobile source emissions would constitute a significant impact.</p>	S	<p>4.4-D: Transportation control measures shall be explored and implemented where feasible.</p>	SU
<p>4.5 NOISE</p>			
<p>4.5-1: Increased Construction Noise. Because construction of land uses facilitated by the proposed Specific Plan could generate noise levels in excess of the County standards for non-transportation noise sources at noise-sensitive receptors, construction noise would be a short-term potentially significant impact on noise-sensitive receptors surrounding specific construction sites.</p>	S	<p>4.5-A: Construction activities near noise-sensitive uses shall be prohibited during nighttime hours and shall employ noise-suppression devices.</p>	SU
<p>4.5-2: Increased Noise From Stationary Sources. Because commercial and light industrial uses that would be implemented under the proposed Specific Plan and the existing IKG Borden plant could generate noise levels at proposed residential uses across the street in excess of County standards for non-transportation noise sources, stationary noise sources would be considered a potentially significant impact.</p>	S	<p>4.5-B: Noise-sensitive uses proposed near stationary noise sources shall incorporate setbacks or other noise attenuation measures.</p>	MLS
<p>4.5-3: Aircraft Noise Impacts. Because aircraft-related noise levels at noise-sensitive land uses proposed in the Plan Area are not projected to exceed 60 dBA L_{dn}, aircraft noise would be considered a less-than-significant impact</p>	LS	<p>No mitigation measures are required.</p>	LS

**TABLE 2-1
SUMMARY OF REVISED PROJECT IMPACT AND MITIGATION MEASURES**

IMPACT	LSBM	MITIGATION	LSAM
<p>4.5-4: Railroad Noise Impacts. Because noise exposure at proposed residential uses adjacent to the SFRR tracks could exceed 65 dBA L_{dn}, railroad noise would be potentially significant.</p>	S	<p>4.5-C: Setbacks or other means of noise attenuation shall be incorporated along roadways where traffic noise levels are projected to exceed County standards.</p>	MLS
<p>4.5-5: Increased Traffic Noise. Because traffic noise generated by buildout of the proposed Specific Plan could result in noise exposures in excess of County standards at existing residences along Avenues 12 and 13 and proposed new residences near SR 99 and adjacent to Avenue 12, Avenue 13, Road E, Road 29, Road 30, and Road 30½, traffic noise would be considered a significant impact.</p>	S	<p>4.5-C: Setbacks or other means of noise attenuation shall be incorporated along roadways where traffic noise levels are projected to exceed County standards. Noise impacts to existing residences along Avenues 12 and 13 cannot be feasibly mitigated.</p>	SU
<p>4.5-6: Cumulative Stationary Noise Sources. Because buildout of the proposed Specific Plan, in conjunction with other reasonably foreseeable development in the project vicinity, could result in stationary source noise levels that exceed applicable County standards, cumulative stationary source noise impacts would be potentially significant.</p>	S	<p>4.5-B: Noise-sensitive uses proposed near stationary noise sources shall incorporate setbacks or other noise attenuation measures.</p>	MLS
<p>4.5-7: Cumulative Traffic Noise. Because cumulative-plus-project traffic noise levels at existing offsite and proposed onsite residential uses located along Avenues 12 and 13, Roads E, 29, 30, and 30½, as well as at residences within approximately 1,200 feet of the SR 99 centerline are projected to exceed applicable County standards, cumulative traffic noise would be considered a significant impact.</p>	S	<p>4.5-C: Setbacks or other means of noise attenuation shall be incorporated along roadways where traffic noise levels are projected to exceed County standards. Noise impacts to existing residences along Avenues 12 and 13 cannot be feasibly mitigated.</p>	SU
<p>4.6 LAND USE</p>			
<p>4.6-1: Potential Land Use Incompatibilities. Because of the potential conflicts between the proposed urban land uses under the Specific Plan and the existing onsite and surrounding agricultural activities, land use compatibility impacts are considered potentially significant.</p>	S	<p>Impact 4.6-1 would remain significant and unavoidable.</p>	SU

**TABLE 2-1
SUMMARY OF REVISED PROJECT IMPACT AND MITIGATION MEASURES**

IMPACT	LSBM	MITIGATION	LSAM
<p>4.6-2: Consistency with Madera County General Plan. The proposed Specific Plan is consistent with the policies of the Madera County General Plan; therefore, no significant impacts would occur related to conflict with an environmental plan or goal of the County.</p>	LS	No mitigation measures are required.	LS
<p>4.6-3: Consistency with Madera County Zoning Ordinance. Because the proposed action is consistent with the planning framework within the County, which is based on large-scale comprehensive planning, impacts related to the Madera County Zoning Ordinance are considered less-than-significant.</p>	LS	No mitigation measures are required.	LS
<p>4.6-4: Loss of Farmland. Because the Specific Plan will result in the development of urban uses on land that is classified as Prime Farmland and Farmland of Statewide Importance, the impact on onsite agricultural land is considered significant.</p>	S	Impact 4.6-4 would remain significant and unavoidable.	SU
<p>4.6-5: Cumulative Urban Intensification of Madera County. Due to cumulative urban intensification, impacts related to reduction in farmland acreage and potential land use conflicts between urban uses and agricultural activities are considered significant.</p>	S	Impact 4.6-5 would remain significant and unavoidable.	SU
<p>4.7A LAW ENFORCEMENT</p>			
<p>4.7A-1: Increased Demand for Law Enforcement Services. Law enforcement service levels would be considered adequate with the maintenance of the Madera County Sheriff's Department service goal of 1 to 1.25 police officers per 1,000 population. With the increase in local tax revenues and, if needed, the formation of a County Services Area containing the Plan Area, the service level would be maintained and the impact of increased demand on law enforcement services would be less-than-significant.</p>	LS	No mitigation measures are required.	LS
<p>4.7A-2: Short-term Increases in Crime. Increased calls for service resulting from vandalism and theft could cause a significant impact to the Sheriff's Department.</p>	S	<p>4.7A-A: Construction sites shall be fenced and private security guards shall be provided during non-construction hours to deter vandalism and theft at construction sites.</p>	MLS

**TABLE 2-1
SUMMARY OF REVISED PROJECT IMPACT AND MITIGATION MEASURES**

IMPACT	LSBM	MITIGATION	LSAM
<p>4.7A-3: Increased Response Times. Because the proposed project would include the provision of adequate funding for additional law enforcement personnel and equipment (i.e., increased local tax revenues and, if needed, the formation of a County Services Area), Sheriff's Department response times would not be substantially affected, resulting in a less-than-significant impact.</p>	LS	No mitigation measures are required.	LS
<p>4.7A-4: Cumulative Demand for Law Enforcement Services. Because, pursuant to the Madera County General Plan, all new development within Madera County will be required to pay its fair share of the cost of providing law enforcement services, cumulative development would not be expected to reduce the Madera County Sheriff's Department service ratio to an unacceptable level. Therefore, cumulative development within the County would result in less-than-significant impacts to law enforcement services.</p>	LS	No mitigation measures are required.	LS
<p>4.7B FIRE PROTECTION</p>			
<p>4.7B-1: Increased Demand on Local Fire Protection Services. Increased tax revenues, collection of County mitigation fees for fire protection, and if necessary, the formation of a County Services Area would ensure the provision of sufficient funds for the additional personnel, equipment, and facilities needed to maintain adequate service levels and acceptable CDF response times within the Plan Area. Therefore, implementation of the Specific Plan would result in a less-than-significant impact on local fire protection services.</p>	LS	No mitigation measures are required.	LS
<p>4.7B-2: Increased Cumulative Demand on Local Fire Protection Services. Because, pursuant to the Madera County General Plan, all new development within Madera County will be required to develop or fund fire protection facilities that maintain adequate service levels and response times, cumulative development would not be expected to reduce CDF's service levels or increase its response times to unacceptable levels. Therefore, cumulative development within the County would result in less-than-significant impacts to fire protection services.</p>	LS	No mitigation measures are required.	LS

**TABLE 2-1
SUMMARY OF REVISED PROJECT IMPACT AND MITIGATION MEASURES**

IMPACT	LSBM	MITIGATION	LSAM
4.7C PARKS AND RECREATION			
<p>4.7C-1: Increased Need for Parkland. Because the proposed Specific Plan includes the provision of a sufficient amount of improved parkland to meet County parkland and Quimby Act requirements, the increased need for parkland would be considered a less-than-significant impact.</p>	LS	No mitigation measures are required.	LS
<p>4.7C-2: Increased Need for Trails and Parks. Because the Specific Plan would establish pedestrian and bicycle pathways within the Plan Area, there would be a less-than-significant impact on trails and bikeways.</p>	LS	No mitigation measures are required.	LS
<p>4.7C-3: Cumulative Need for Parkland. Because the proposed Specific Plan includes provisions to mitigate its own impact on park facilities, the project's contribution to cumulative park and recreation impacts is considered less-than-significant.</p>	LS	No mitigation measures are required.	LS
4.7D SCHOOLS			
<p>4.7D-1: Increased Demand for School Facilities. Because of the uncertainty of school funding, impacts to school facilities from the implementation of the proposed Specific Plan are considered significant.</p>	S	<p>4.7D-A: Ensure adequate school facilities on a project-by-project basis by requiring written documentation from the school district acknowledging that adequate school facilities exist or will be provided by development project applicants.</p>	MLS
<p>4.7D-2: Improved Community College Facilities. The new campus of the State Center Community College District would provide enhanced college educational facilities and opportunities to the region, which would be a beneficial consequence of development of the Specific Plan. In the context of CEQA impact categories of the EIR, this consequence would be categorized as less-than-significant.</p>	LS	No mitigation measures are required.	LS

**TABLE 2-1
SUMMARY OF REVISED PROJECT IMPACT AND MITIGATION MEASURES**

IMPACT	LSBM	MITIGATION	LSAM
<p>4.7D-3: Cumulative Demand for School Facilities. Because cumulative development within the District could result in potential overcrowding conditions, cumulative impacts on school facilities are considered significant.</p>	S	<p>7.4D-A: Ensure adequate school facilities on a project-by-project basis by requiring written documentation from the school district acknowledging that adequate school facilities exist or will be provided by development project applicants.</p>	MLS
<p>4.7E WATER</p>			
<p>4.7E-1: Increased Groundwater Withdrawals. Because the increase in groundwater withdrawal associated with buildout of the Plan Area would be offset by decreased withdrawal in other areas of the county (due to availability of MID water no longer used in the Plan Area), no decline of the regional water table would occur. Therefore, any project impact related to increased groundwater withdrawal would be considered less-than-significant.</p>	LS	<p>No mitigation measures are required.</p>	LS
<p>4.7E-2: Adequacy of Proposed Water System. With the payment of water well construction fees and construction of the proposed water facilities, the proposed water system would be adequate, resulting in less-than-significant impacts to water system infrastructure.</p>	LS	<p>No mitigation measures are required.</p>	LS
<p>4.7E-3: Potential to Interrupt Water Supply. The interruption of water supplies resulting from an upset condition, such as loss of power to groundwater pumps, is considered a potentially significant impact.</p>	S	<p>4.7E-A: Backup power supplies shall be incorporated into the design of the water system.</p>	MLS
<p>4.7E-4: Quality of Plan Area Groundwater Supply. Because the potential for groundwater contamination from the vineyard pesticide DBCP exists within the Plan Area and because no current groundwater monitoring data is available, the impact to the project's water supply related to groundwater quality is potentially significant.</p>	S	<p>4.7E-B: Ensure the provision a safe urban water supply for the Plan Area by requiring regular testing of groundwater pumping wells and implementing wellhead treatment, if necessary.</p>	MLS

**TABLE 2-1
SUMMARY OF REVISED PROJECT IMPACT AND MITIGATION MEASURES**

IMPACT	LSBM	MITIGATION	LSAM
<p>4.7E-5: Increased Reliance on Groundwater Resources. Because cumulative development within the County would result in additional decline of the regional water table, and because a regional groundwater management plan is not yet in place, the cumulative impact to groundwater supply would be considered significant and unavoidable.</p>	S	<p>4.7E-C: Require the implementation of water demand management programs prior to approval of individual projects to minimize the water demands of new development.</p>	SU
<p>4.7F WASTEWATER/SEWER</p>			
<p>4.7F.1: Increased Need for Treatment Capacity. Because the updated Master Plan for the Sanitary Sewer System for the Urban Growth Area of the City of Madera will include the Plan Area in future capacity needs determinations, the increased demand on the City's sewage treatment system will be accommodated through a planned expansion, if determined necessary by the City, and the impact on wastewater treatment capacity would be considered less-than-significant.</p>	LS	<p>No mitigation measures are required.</p>	LS
<p>4.7F-2: Increased Sewage Generation. Increased wastewater generation in the amount of approximately 2.8 mgd on a daily basis is considered a significant impact, requiring the need for a complete sewer system, including additional interceptor capacity along Avenue 13.</p>	S	<p>4.7F-B: Payment of sewage connection fees for the expansion of distribution lines and sewer treatment capacity and the construction of onsite facilities.</p>	MLS
<p>4.7F-3: Need for Additional Treatment Capacity. Because the updated Master Plan for the Sanitary Sewer System for the Urban Growth Area of the City of Madera will include the Plan Area and other development in the project's vicinity in its determination of future sewage-treatment capacity needs, the proposed project's contribution to cumulative impacts to the City's sewage treatment capacity would be less-than-significant.</p>	LS	<p>No mitigation measures are required.</p>	LS

**TABLE 2-1
SUMMARY OF REVISED PROJECT IMPACT AND MITIGATION MEASURES**

IMPACT	LSBM	MITIGATION	LSAM
4.7G SOLID WASTE			
<p>4.7G-1: Increased Demand on Local Solid Waste Disposal Facilities. Because of the substantial amount of solid waste generated by development of the Specific Plan and uncertainties about the future capacity of the Fairmead Landfill, impacts on solid waste facilities from the implementation of the Specific Plan would be considered potentially significant.</p>	S	<p>4.7G-A: Require the provision of adequate solid waste facilities.</p>	MLS
<p>4.7G-2: Increased Cumulative Demand on Solid Waste Disposal Facilities. Because the status of future landfill capacity is uncertain, the project development would contribute to a potentially significant cumulative impact on solid waste facility capacities.</p>	S	<p>4.7G-A: Require the provision of adequate solid waste facilities.</p>	MLS
4.7H ENERGY			
<p>4.7H-1: Increased Demand on Local Electrical Services. Because the project's electricity demand cannot be accurately estimated (for non-residential uses) at this preliminary planning stage, it cannot be determined at this date whether existing and planned facilities would be adequate to serve the project or whether new or improved facilities would be necessary. Therefore, the project could result in potentially significant impacts to electricity services.</p>	S	<p>4.7H-A: Require the provision of adequate electricity services for individual projects in the Plan Area.</p>	MLS
<p>4.7H-2: Consistency With PG&E Policies Regarding Land Uses Within Easements. Because implementation of the Specific Plan would not result in the placement of structures or facilities within the PG&E easement and would not restrict access to PG&E facilities by PG&E personnel, no impact associated with inconsistency with PG&E easement-restrictions policies would be expected to occur.</p>	LS	<p>No mitigation measures are required.</p>	LS

**TABLE 2-1
SUMMARY OF REVISED PROJECT IMPACT AND MITIGATION MEASURES**

IMPACT	LSBM	MITIGATION	LSAM
<p>4.7H-3: Increased Demand on Natural Gas Services. Because the project's natural gas demand cannot be accurately estimated (for non-residential uses) at this preliminary planning stage, it cannot be determined at this date whether existing facilities would be adequate to serve the project or whether new or improved facilities would be necessary. For this reason, the project could result in potentially significant impacts to natural gas services.</p>	S	<p>4.7H-B: Require the provision of adequate natural gas services for individual projects in the Plan Area.</p>	MLS
<p>4.7H-4: Increased Cumulative Demand on Local Electrical and Natural Gas Services. Because development within the Plan Area could affect existing and planned facilities, the proposed Specific Plan would potentially contribute to a significant cumulative impact on electricity and natural gas services.</p>	S	<p>4.7H-A: Require the provision of adequate electricity services for individual projects in the Plan Area. 4.7H-B: Require the provision of adequate natural gas services for individual projects in the Plan Area.</p>	MLS
<p>4.8 BIOLOGICAL RESOURCES</p>			
<p>4.8-1: Loss of Agricultural Habitat. Because no special-status plant or wildlife species, or substantial populations of common species, would be adversely affected, the loss of approximately 1,690 acres agricultural habitat would be considered a less-than-significant impact.</p>	LS	No mitigation measures are required.	LS
<p>4.8-2: Loss of Riparian Woodland Habitat Disturbance to the Streambed of Cottonwood Creek. Because of the importance of Cottonwood Creek as wildlife habitat, the loss of riparian vegetation and associated wildlife, and the disturbance to the streambed, as result of the proposed road and bridge crossings would be considered a significant impact.</p>	S	<p>4.8-A: Coordinate with the appropriate state and/or federal agency on the replacement of removed riparian vegetation, on any alteration of the streambed, or on any dredging or fill occurring in the creek as a result of bridge and road crossings constructed over Cottonwood Creek.</p>	MLS
<p>4.8-3: Indirect Degradation of the Cottonwood Creek Corridor. Implementation of the design guidelines and policies in the Specific Plan concerning the Cottonwood Creek corridor will maintain potential indirect habitat degradation impacts at a less-than-significant level.</p>	LS	No mitigation measures are required.	LS

**TABLE 2-1
SUMMARY OF REVISED PROJECT IMPACT AND MITIGATION MEASURES**

IMPACT	LSBM	MITIGATION	LSAM
<p>4.8-4: Loss and Disturbance of Freshwater Marsh Habitat. Because of the status of wetlands as sensitive natural resources with state and federal agencies, any loss of, or disturbance to, wetland areas would be considered a significant impact.</p>	S	<p>4.8-B: Implement measures to protect, maintain, and enhance sensitive wetland areas.</p>	MLS
<p>4.8-5: Loss or Disturbance of Burrowing Owl and/or Swainson's Hawk Nests. Because of the sensitive nature of the Swainson's hawk and the burrowing owl, the loss of active nests of these species, and the possible loss of associated foraging habitat, as a result of Specific Plan implementation would be considered a significant impact.</p>	S	<p>4.8-C: Conduct a survey for Swainson's hawk and burrowing owl nests during the breeding season prior to grading and construction activities.</p>	MLS
<p>4.8-6: Cumulative Biological Resources Impact. Because of the generally low value of agricultural areas to native plant and wildlife population, and because of the large amounts of agricultural land in the vicinity and region, the contribution to the ongoing loss of agricultural habitats as a result of implementation of the Specific Plan is a less-than-significant impact.</p>	LS	<p>No mitigation measures are required.</p>	LS
<p>4.9 TRANSPORTATION AND CIRCULATION</p>			
<p>4.9-1: Degradation of Roadway Level of Service. Because buildout of the Specific Plan would result in LOS worse than D along Avenue 12 between the SR 99 northbound ramps and Road 29, including the overcrossing of the railroad, roadway level of service impacts would be considered significant at this location.</p>	S	<p>4.9-A: Roadway widening shall occur along sections of Avenue 12 projected to operate at LOS E or worse with buildout of the Specific Plan.</p>	MLS
<p>4.9-2: Cumulative Degradation of Roadway Level of Service. Because buildout of the Specific Plan, in conjunction with other reasonably foreseeable development in the vicinity, would result in a LOS E at Avenue 12 between the SR 99 northbound ramps and Road 30 1/2, including the overcrossing of the railroad, cumulative roadway level of service impacts would be considered significant.</p>	S	<p>4.9-A: Roadway widening shall occur along sections of Avenue 12 projected to operate at LOS E or worse with buildout of the Specific Plan.</p>	MLS

TABLE 2-1
SUMMARY OF REVISED PROJECT IMPACT AND MITIGATION MEASURES

IMPACT		LSBM	MITIGATION	LSAM
4.10 AESTHETICS/LIGHT AND GLARE				
<p>4.10-1: Alteration of Views. Development of the Specific Plan would substantially change the visual character and create an obstruction to, and across, the Plan Area through the creation of urban development. Because the conversion of open views to views of developed and urban uses is generally considered to be a negative visual change, this is considered to be a significant visual impact.</p>		S	<p>4.10-A: Project developers within the Plan Area shall prepare a landscaping plan for the perimeter of the Plan Area.</p> <p>4.10-B: Project developers within the Plan Area shall submit plans for fences, walls, and signs.</p> <p>4.10-C: Project developers within the Plan Area shall submit grading and landscaping plans.</p>	SU
<p>Impact 4.10-2: Increased Light and Glare. A substantial increase in the sources of nighttime lighting and glare, in combination with lack of design controls for nighttime lighting in the Specific Plan, would result in a significant light and glare impact to surrounding rural residential uses that are not currently subject to such effects.</p>		S	<p>4.10-D: All lighting of commercial areas shall be low intensity and shielded such that light is directed downward and not toward adjacent uses.</p> <p>4.10-E: Street lights shall be provided in accordance with Madera County standards.</p>	SU
<p>4.10-3: Increased Cumulative Alteration of Views. Because future development, including the development of the Plan Area, is expected to substantially alter the existing visual character within the County, the proposed Specific Plan would contribute to a significant cumulative visual and aesthetic impact within the County.</p>		S	<p>4.10-A: Project developers within the Plan Area shall prepare a landscaping plan for the perimeter of the Plan Area.</p> <p>4.10-B: Project developers within the Plan Area shall submit plans for fences, walls, and signs.</p> <p>4.10-C: Project developers within the Plan Area shall submit grading and landscaping plans.</p>	SU
<p>4.10-4: Increased Cumulative Light and Glare. Because future development, including the development of the Plan Area, is expected to substantially increase night lighting in the County, the proposed Specific Plan would contribute to a significant cumulative night lighting impact.</p>		S	<p>4.10-D: All lighting of commercial areas shall be low intensity and shielded such that light is directed downward and not toward adjacent uses.</p> <p>4.10-E: Street lights shall be provided in accordance with Madera County standards.</p>	SU

**TABLE 2-1
SUMMARY OF REVISED PROJECT IMPACT AND MITIGATION MEASURES**

IMPACT	LSBM	MITIGATION	LSAM
4.11 CULTURAL RESOURCES			
<p>4.11-1: Effect on Cultural Resources within the Plan Area. Because the presence of important onsite cultural resources cannot be dismissed, the impact to cultural resources resulting from project development would be considered potentially significant.</p>	S	<p>4.11-A: Require project-by-project archaeological field investigations and commitments to resource avoidance or data recovery, if important resources are encountered.</p>	MLS
<p>4.11-2: Cumulative Effects on Cultural Resources. Because recorded information regarding the existence and extent of culturally- and historically- important sites in the region is minimal and the potential to disturb important resources cannot be dismissed, the cumulative impact to cultural resources would be considered potentially significant.</p>	S	<p>4.11-A: Require project-by-project archaeological field investigations and commitments to resource avoidance or data recovery, if important resources are encountered.</p>	MLS
<p>LSBM = Level of significance before mitigation LSAM = Level of significance before mitigation MLS = Mitigated to a less-than-significant level SU = Significant and unavoidable LS = Less-than-significant without mitigation S = Significant</p>			

Resolution No. 00-118

EXHIBIT B

Findings Regarding Significant Impacts, Project Alternatives, and Statement of Overriding Consideration for State Center Community College Specific Plan

*The Findings Regarding Significant Impacts, Project Alternatives, and Statement of Overriding Consideration for the State Center Community College Specific Plan presented in this Exhibit B beginning on page B-2 are from Exhibit O of Madera County Board of Supervisors Resolution No. 95-290, adopted on November 7, 1995. Resolution 95-290 certified the *Final Environmental Impact Report for the State Center Community College Specific Plan* and approved the *State Center Community College Specific Plan* and a related amendment to the *Madera County General Plan* with findings and conditions. The Madera Center was evaluated at a project level in the *Specific Plan EIR* and, therefore, the findings are applicable to the Madera Center project.*

Exhibit "O"

FINDINGS REGARDING SIGNIFICANT IMPACTS, PROJECT ALTERNATIVES, AND STATEMENT OF OVERRIDING CONSIDERATIONS FOR STATE CENTER COMMUNITY COLLEGE SPECIFIC PLAN

I. INTRODUCTION

In accordance with the California Environmental Quality Act ("CEQA") Section 21081 and State CEQA Guidelines Sections 15091 and 15093, the Board of Supervisors of the County of Madera adopts and makes the following findings regarding the potential unavoidable significant environmental impacts of the State Center Community College Specific Plan ("Plan" or "Project"), the alternatives to the proposed Project, and a statement of overriding considerations concerning the anticipated economic, social, and other benefits of the Project.

The Environmental Impact Report ("EIR") for the State Center Community College Specific Plan indicates that the Project will result in a number of significant and potentially significant unavoidable adverse impacts. These are impacts that will remain significant or potentially significant even after the implementation of the applicable mitigation measures designed to lessen these impacts, as set forth in the EIR. The significant and unavoidable adverse impacts of the Project are summarized on pages 9-13 of this document. A discussion of alternatives to the original Project identified in the EIR, along with the Board's findings thereon, is found on pages 14-15 of this document. A Statement of Findings of Overriding Considerations is found on pages 16-18 of this document.

///

///

///

1 II. FINDINGS OF SIGNIFICANT AND POTENTIALLY SIGNIFICANT
2 UNAVOIDABLE IMPACTS

3 A. Air Quality

4 *Impacts*

5 Development in accordance with the Plan will result in significant and
6 unavoidable adverse emissions due to short-term construction emissions and
7 long-term operational emissions. Short-term construction emissions will result
8 from construction equipment operations and grading activities. Long-term
9 operational emissions will result from onsite energy consumption and regional
10 mobile source emissions.

11 *Mitigation Measures*

12 Construction equipment shall be tuned and operated in a manner that
13 reduces exhaust emissions. Fugitive dust suppression measures shall be
14 implemented. Energy-saving design features shall be incorporated into
15 individual projects. Transportation control measures shall be explored and
16 implemented where feasible.

17 *Findings*

18 This is considered a Significant and Unavoidable Impact. There are no
19 additional mitigation measures available to reduce this impact to a less-than
20 significant level.

21 B. Land Use

22 *Impacts*

23 There will be the conversion of up to 1,690 acres of existing on-site
24 agricultural land to urban uses as a result of the Plan. Approximately 70% of
25 this land is designated Prime Farmland; approximately 15% is Farmland of
26 Statewide importance; and about 15% is Unique Farmland. Because the Plan
27 would result in the development of Urban Uses on land that is classified as
28 Prime Farmland and Farmland of Statewide importance, the impact on on-site

1 agricultural land is considered significant. Furthermore, the Plan's growth-
2 inducing characteristics, especially in conjunction with other related develop-
3 ment projects, have the potential to exacerbate land use conflicts between
4 urban development and adjacent agricultural lands.

5 ***Mitigation Measures***

6 Buffers shall be provided along the perimeter of individual developments
7 within the Plan Area where development sites border existing agricultural uses.
8 Prior to approval of any individual development project, project applicants
9 shall submit to the County Planning Department plans for maintenance of edge
10 or buffer treatments along the edges of sites that abut properties still in
11 agricultural uses. Such treatments shall include some combination of walls,
12 landscaped berms, and/or setbacks, subject to County approval.

13 ***Findings***

14 Implementation of the recommended mitigation measures will partially
15 reduce the impacts of land use incompatibility within the Plan Area during the
16 years prior to full project buildout; however, the land use impacts associated
17 with the conflicts between urban and agricultural uses and their incompatibility
18 remain as significant unavoidable impacts of the Project for which no further
19 mitigation is feasible.

20 **C. Noise**

21 ***Impacts***

22 Traffic generated by the development of the Specific Plan will result in
23 increased noise levels to existing residences along Avenue 12 and Avenue 13.
24 Construction of land uses facilitated by the Plan could create noise levels above
25 those acceptable to the County. Construction noise would be short-term,
26 nonetheless, potentially a significant impact.

27 ***Mitigation Measures***

28 Construction activities near noise-sensitive uses shall be prohibited during

1 nighttime hours and shall employ noise-suppression devices. Noise-sensitive
2 uses proposed near stationary noise sources shall incorporate setbacks or other
3 noise attenuation measures. Setbacks or other means of noise attenuation shall
4 be incorporated along roadways where traffic noise levels are projected to
5 exceed County standards.

6 *Findings*

7 After implementation of the recommended mitigation measures, noise
8 impacts will be reduced, but not to a less-than-significant level, and significant
9 unavoidable short-term and long-term impacts will remain. In particular, traffic
10 noise impacts to existing residences along Avenue 12 and Avenue 13 cannot be
11 feasibly reduced to a less-than-significant level. Mitigation is not feasible
12 because driveway openings to the street preclude construction of effective
13 noise barriers. Therefore, these impacts are significant and unavoidable for
14 approximately 25 existing residences next to the Plan Area on Avenue 13 and
15 one residence next to the Plan Area on Avenue 12.

16 D. Aesthetics/Light and Glare

17 *Impacts*

18 The proposed Specific Plan and related projects in the area will change the
19 existing rural character of the area and alter existing views. The proposed Plan
20 would also result in significant and unavoidable increases in night lighting
21 within the Plan area.

22 *Mitigation Measures*

23 Project developers within the Plan Area shall (1) prepare a landscaping plan
24 for the perimeter of the Plan Area, (2) submit plans for fences, walls and signs,
25 and (3) submit grading and landscaping plans. All lighting of commercial areas
26 shall be low intensity and shielded such that light is directed downward and not
27 toward adjacent uses. Street lights shall be provided in accordance with
28 Madera County standards.

1 ***Findings***

2 After implementation of the recommended mitigation measures, visual
3 impacts and light and glare impacts will be reduced, but not to a less-than-
4 significant level. The loss of open views and the increase in night lighting
5 remain as significant unavoidable impacts of the Project for which no further
6 mitigation is feasible.

7 **E. Schools**

8 ***Impacts***

9 The proposed Project would result in the development of approximately
10 4,500 residential dwelling units at full buildout. Based on assumed student
11 generation factors, the Project would result in approximately 2,856 additional
12 kindergarten through twelfth grade students for the Madera Unified School
13 District. The District as a whole is currently overcrowded and it is assumed
14 that existing campuses would not be capable of accommodating this large
15 number of additional students. In addition, development of the Project and
16 related projects within the School District would continue to result in
17 overcrowding of existing schools. Cumulative impacts on school facilities
18 therefore are considered significant. On the positive side, the Project includes
19 a new campus of the State Center Community College District. This campus
20 will provide educational facilities for 6,000 students and meet the needs of the
21 growing population of Madera and northern Fresno Counties. The develop-
22 ment of this campus will have a beneficial effect related to the enhancement
23 of educational opportunities at the college level.

24 ***Mitigation Measures***

25 Adequate school facilities shall be ensured on a project-by-project basis by
26 requiring written documentation from the School District acknowledging that
27 adequate school facilities exist or will be provided by development project
28 applicants. In addition, the Plan shall be modified to include two elementary

1 school sites and one middle school site located as per Exhibit "Q" which is
2 attached hereto.

3 ***Findings***

4 Implementation of the recommended mitigation measures will reduce the
5 direct impacts of the Project on school facilities to a level of less-than-
6 significant. However, the cumulative impact of the Project and other projects
7 within the Madera Unified School District remains significant and unavoidable
8 because of the current and projected overcrowded conditions. No further
9 mitigation measures are available to reduce this cumulative impact to a level
10 of less-than-significant.

11 F. Traffic

12 ***Impacts***

13 The proposed Project includes substantial improvements to the existing
14 roadway network. The improvements include widening of existing roadways,
15 realignment of existing roadways, and new roadways. The roadways in the
16 Plan have been sized to accommodate Project and future traffic. Nevertheless,
17 it is expected that at project buildout (2020) Avenue 12 between SR 99
18 northbound ramps and Road 29, including the Southern Pacific Railroad
19 overcrossing, will operate at Level-of-service "D" or worse. This is considered
20 to be a significant impact. It is also expected that the cumulative roadway
21 level-of-service impacts can be considered significant based on traffic projec-
22 tions at Plan buildout along with other reasonably foreseeable development in
23 the vicinity. Traffic impacts of specific land uses with the Plan Area will be
24 addressed when such specific uses are proposed. This Board has established
25 a road impact mitigation fee program which may address some of those
26 impacts. However, traffic impacts could remain significant without further
27 mitigation measures.

28 ///

1 **Mitigation Measures**

2 Roadway widening shall occur along sections of Avenue 12 projected to
3 operate at Level-of-Service "E" or worse with buildout of the Specific Plan. The
4 developers of this Project will contribute their proportionate share towards the
5 costs of road improvements made necessary by the Project.

6 **Findings**

7 The Project's impacts on traffic and circulation are reduced by implementa-
8 tion of the recommended mitigation measures. However, because specific
9 programs for the implementation of necessary transportation improvements
10 and mitigation measures have not been established at this time (other than the
11 road impact mitigation fee program), the mitigation of off-site Plan and
12 cumulative impacts is considered to be unresolved and, therefore, potentially
13 significant.

14 **III. PROJECT ALTERNATIVES FINDINGS**

15 The primary objective of the Project is to provide a Specific Plan for the Plan
16 Area that is consistent with the goals, policies, and implementation programs
17 of the new General Plan. The specific objectives of the Project are (1) create
18 a development which provides an integrated mix of residential, commer-
19 cial, employment-generating, and recreational land uses within the Plan Area;
20 (2) develop a College District with a community college as its focus and a
21 Highway/Commercial District with "big box" commercial/industrial uses within
22 the Plan Area; (3) provide a fiscally-sound, phased development that results in
23 net tax revenues to the County; (4) create a multi-purpose trail network to
24 serve as an effective circulation system; (5) provide the opportunity for mass
25 transit on a local and regional level; (6) provide protection to development
26 within the Plan Area from potential 100-year flood events, as required by the
27 new General Plan; and (7) provide for the protection and enhancement of the
28 Cottonwood Creek Corridor.

1 The *EIR* addressed the environmental effects of three alternatives besides the
2 proposed Project and also examined the ability of the alternatives to feasibly
3 attain most of these Project objectives.

4 Alternative 1, the "No Project Alternative," assumes no additional
5 development/activities in the Plan Area. The Plan Area would remain in
6 agriculture with rural residential and a few industrial uses. Although no
7 development would be permitted under this alternative, the current zoning
8 designations for the Plan Area, which include ARE-20, ARE-40, CRG, CRH, I-H,
9 and POS would be retained. This alternative would result in no new
10 environmental impacts. The significant unavoidable adverse impacts associated
11 with implementation of the Project would be avoided because no new
12 development would occur. This alternative is considered to be environmental-
13 ly superior to the proposed Project. However, none of the project objectives
14 would be achieved.

15 Alternative 2, the "Alternative Site Alternative," would differ from the
16 proposed Project only in that it would place the Project on an alternative site
17 meeting certain criteria. Sites studied by the State Center Community College
18 District as a part of its comprehensive site study for its new campus and
19 potential sites along State Route 99 were considered. Implementation of the
20 Plan at an alternative site would be expected to result in significant and
21 unavoidable adverse impacts comparable to those produced by the proposed
22 Project. Neither the alternative site nor the proposed Project is environmental-
23 ly superior to the other. The alternative site would be expected to meet all of
24 the objectives of the Project. However, because of multiple ownership of the
25 alternative site and because the proposed Project site is designated as a New
26 Growth Area on the new General Plan and the alternative site is not, this
27 alternative is rejected as infeasible in favor of the proposed Project.

28 Alternative 3, the "Less Intense Development Alternative," would differ

1 from the proposed Project in that it would severely limit development so as to
2 reduce the impact of air quality emissions to a less-than-significant level. This
3 alternative would also substantially reduce impacts related to aesthetics, light,
4 and glare. Impacts related to land use compatibility between urban uses and
5 agricultural uses and the loss of farmland would be expected to remain
6 significant and unavoidable. Since this alternative would result in less severe
7 impacts than the Proposed Project, it is considered to environmentally
8 superior. However, this alternative would not meet the project objectives,
9 especially the creation of a College District within the Plan Area. The size of
10 the development under this alternative would not be able to function as a
11 multi-use community. Finally, this alternative would not be consistent with the
12 projected development intensity envisioned by the new General Plan.
13 Therefore, this alternative is rejected in favor of the proposed Project.

14 IV. STATEMENT OF OVERRIDING CONSIDERATIONS FINDINGS

15 The Board of Supervisors finds that, to the extent that any impacts
16 (including, without limitation, any cumulative impacts) attributable to the
17 Project remain unmitigated or are considered to be unavoidable, such impacts
18 are acceptable in light of the overriding economic, social, and other benefits
19 and considerations set forth herein. In other words, the Board of Supervisors
20 finds that the following economic, social, and other benefits and considerations
21 outweigh the unmitigated or unavoidable impacts of the Project, thereby
22 warranting approval of the Project.

23 1. Increased Educational Opportunities.

24 A key development within the Plan Area is the proposed Madera County
25 campus of the State Center Community College District. The campus is
26 planned to serve the needs of the growing population of Madera and northern
27 Fresno Counties. Ultimately, this campus will support 320,000 square feet of
28 campus development and provide educational facilities for 6,000 students. The

1 academic programs of the college are planned to consist of transfer/general
2 education (courses credits transferable to the University of California or the
3 California State University systems), occupational education, developmental
4 education with courses in math and English communication, and physical
5 education/athletics. Development of the campus will have a beneficial effect
6 on the community and the region by enhancing the college-level educational
7 opportunities available to area residents.

8 **2. Increased Employment Opportunities.**

9 The Project will indirectly result in the creation of an estimated 4,300 new
10 permanent employment positions in Madera County by the year 2020. This
11 includes an estimated 270 full-time-equivalent positions, including faculty, staff,
12 and administrative employees, directly attributable to the new State Center
13 Community College campus and 526 positions indirectly attributable to the
14 campus. During the 25-year timeframe of the Plan and beyond, hundreds of
15 temporary construction jobs will also be created for local contractors

16 **3. Increased Housing Opportunities.**

17 The Project will improve the supply and diversity of housing types available
18 in this part of the County. Presently, there is only scattered rural residential
19 housing in the vicinity of the Plan Area and scattered agricultural residences
20 It is estimated that approximately 4,500 new dwelling units, including both
21 single-and multi-family units, will be developed by 2020 under this Plan

22 **4. Additional Park and Recreational Facilities and Opportunities**

23 The County currently provides little in the way of parks and recreational
24 facilities. The policies and programs of the new General Plan, however,
25 establish park and park facility standards and require new development to
26 dedicate land or provide funding to meet the standards. These policies also
27 provide for the location for these facilities where they are needed while
28 minimizing environmental impacts and conflicts with other land uses. The

1 General Plan's policies and programs also promote a Countywide trail system
2 and require new development to contribute to a trail system and preservation
3 of the County's areas of scenic beauty. This Project meets the General Plan's
4 requirements for parkland by designating 43 acres of the Plan Area as
5 Neighborhood Parks. An additional 44 acres are designated as Pedestrian
6 Easement/Open Space.. These areas will provide landscaped playground areas
7 as well as serving as trailways connecting residential, park, and school areas.
8 The trail system will connect to points adjacent to the Plan Area and eventually
9 be interconnected to future trail systems. With full application of these policies
10 and implementation of the programs, the County should be able to ensure that
11 residents of Madera County have increased access not only to parkland and
12 active recreational opportunities, but also open-space areas for their passive
13 enjoyment. The implementation of the Project, therefore, will provide more
14 and better park and recreational facilities and opportunities for current and
15 future residents of the County.

16 **5. Increased Economic Activities.**

17 Development of the Project would result in an increase in regional economic
18 activities. This would include the creation of direct construction opportunities,
19 as well as over 4,300 new permanent jobs. Construction related-spending
20 would also result in the inducement of additional Project-related indirect job
21 opportunities in the wholesale and retail services sectors of the regional
22 economy.

Resolution No. 00-118

EXHIBIT C

Madera Center Mitigation Measures

Introduction

The mitigation measures presented in this Exhibit C are based on the mitigation measures adopted by the Madera County Board of Supervisors for the *Final Environmental Impact Report for the State Center Community College Specific Plan*. As provided in State CEQA Guidelines Section 15096, the SCCCD, as a Responsible Agency for the *Specific Plan EIR*, "...has responsibility for mitigating or avoiding only the direct or indirect environmental effects of those parts of the project which it decides to carry out, finance, or approve." Therefore, the mitigation measures presented in this Exhibit from the Specific Plan EIR are limited to those that relate to direct or indirect environmental effects of the Madera Center Project. In some cases, the wording of the mitigation measures presented has been modified to fit the circumstances of the Madera Center Project; however, the basic intent of the measures has not been changed.

Mitigation Measures - General

1. A flooding and drainage improvement plan shall be prepared to address potential project-related flood hazards and shall be included in the project plans submitted to the Department of State Architect for review and approval. (*Specific Plan EIR* Mitigation Measure 4.3-A, modified)
2. The project is subject to the requirements for a National Pollution Discharge Elimination System (NPDES) permit for any construction activity resulting in the disturbance of five or more acres. (*Specific Plan EIR* Mitigation Measure 4.3-B, modified)
3. Construction equipment shall be tuned and operated to minimize exhaust emissions. (*Specific Plan EIR* Mitigation Measure 4.4-A, modified)
4. The project shall comply with San Joaquin Valley Unified Air Pollution Control District Rule 8020 (Control of Fine Particulate Matter from Construction, Demolition, Excavation, and Extraction activities). (*Specific Plan EIR* Mitigation Measure 4.4-B, modified)
5. Energy-saving design features shall be incorporated in the project to the extent feasible, including those described in the Specific Plan Draft EIR, page 4.4-24. (*Specific Plan EIR* Mitigation Measure 4.4-C, modified)
6. Construction activity near noise-sensitive uses (e.g. residences) shall be prohibited during nighttime hours and shall employ noise-suppression devices. Grading and heavy construction activity shall be prohibited between the hours of 7 p.m. and 7 a.m., and all gas- or diesel-powered construction shall be fitted with heavy-duty mufflers to reduce noise impacts. (*Specific Plan EIR* Mitigation Measure 4.5-A, modified)
7. Noise-sensitive uses proposed near stationary noise sources shall incorporate

- setbacks or other noise attenuation measures. (*Specific Plan EIR Mitigation Measure 4.5-B*)
8. Setbacks or other means of noise attenuation shall be incorporated along roadways where traffic noise levels are projected to exceed County standards. (*Specific Plan EIR Mitigation Measure 4.5-C*)
 9. Construction sites shall be fenced and private security guards shall be provided as necessary during non-construction hours to deter vandalism and theft at construction sites. (*Specific Plan EIR Mitigation Measure 4.7A-A, modified*)
 10. A backup power supply shall be incorporated into the design of the project water system to ensure adequate fire flows during power outages. (*Specific Plan EIR Mitigation Measure 4.7E-A, modified*)
 11. A safe water supply shall be ensured for the project by performing regular testing of groundwater pumping wells and implementing wellhead treatment, if necessary. (*Specific Plan EIR Mitigation Measure 4.7E-B, modified*)
 12. The project design shall incorporate water conservation measures to the maximum feasible. (*Specific Plan EIR Mitigation Measure 4.7E-C, modified*)
 13. The project shall be connected to the City of Madera wastewater collection and treatment system in accordance with the requirements of the City. (*Specific Plan EIR Mitigation Measure 4.7F-B, modified*)
 14. Adequate electricity, natural gas, and solid waste disposal services shall be required for the project. (*Specific Plan EIR Mitigation Measure 4.7G-A, 4.7H-A, and 4.7H-B, modified*)
 15. The project shall protect, maintain, and enhance any sensitive wetland areas to the extent feasible and shall comply with applicable state and federal requirements before impacting wetland areas (*Specific Plan EIR Mitigation Measure 4.8-B, modified*)
 16. A qualified biologist shall conduct a preconstruction survey for Burrowing Owls within 30 days of the on-set of project construction. This survey shall be conducted according to methods described in the *Staff Report on Burrowing Owl Mitigation* (CDFG 1995).

If preconstruction surveys undertaken during the nesting season (February through July) locate active nest burrows within or near construction zones, an appropriate construction-free setback shall be established around these nests until the conclusion of the breeding season. The distance of the setback shall be determined by a qualified ornithologist in consultation with the California Department of Fish and Game. At the conclusion of the nesting season, these owls may be relocated as discussed below.

If preconstruction surveys undertaken during the non-breeding season (August through January) locate resident owls, these individuals may be relocated to alternative habitat. The relocation of resident owls shall be conducted according to a relocation plan prepared by a qualified biologist in consultation with the California Department of Fish and Game. Passive relocation as described in the

Draft Report on Burrowing Owl Mitigation shall be the preferred method of relocation. The plan shall provide for the owls' relocation to nearby land possessing available nesting habitat. (*Specific Plan EIR Mitigation Measure 4.8-C, modified*)

17. Roadway widening shall occur along the section of Avenue 12 adjacent to the site as has been agreed upon by Madera County and SCCCD. (*Specific Plan EIR Mitigation Measure 4.9-A, modified*)
18. Exterior lighting shall be low intensity and shielded such that the light is directed downward and not toward adjacent uses. (*Specific Plan EIR Mitigation Measure 4.10-D, modified*)
19. Street lights shall be provided in accordance with Madera County standards. (*Specific Plan EIR Mitigation Measure 4.10-E*)
20. Prior to the start of construction, all contractors and subcontractors for the project shall be informed in writing of the potential for the discovery of important paleontological resources below the ground surface on the project site. If any such resources are found, all work shall halt within the area in question and a qualified paleontological resources specialist shall evaluate the find and make recommendations for further action.
21. Prior to the start of construction, all contractors and subcontractors for the project shall be informed in writing of the potential for the discovery of important cultural resources below the ground surface on the project site and the legal consequences for damaging or destroying such resources. If any such resources are found, all work shall halt within the area in question and a qualified cultural resources specialist shall evaluate the find and make recommendations for further action. (*Specific Plan EIR Mitigation Measure 4.11-A, modified*)
22. If human remains are discovered during the project activities, the Madera County Coroner must be notified immediately. The Coroner has two working days to examine the remains and 24 hours to recommend proper treatment or disposition of the remains, following the Native American Heritage Commission guidelines. (*Specific Plan EIR Mitigation Measure 4.11-A, modified*)

Mitigation Measures – Phase One

Mitigation measures adopted for the *Phase One Mitigated Negative Declaration* shall continue to apply to that phase.

Resolution No. 00-118

EXHIBIT D

**Madera Center Mitigation Measures
Monitoring and Reporting Program**

State CEQA Guidelines Section 15097 requires that the District adopt a Mitigation Monitoring and Reporting Program (MMRP) to ensure the mitigation measures necessary to avoid or reduce potentially significant project impacts are implemented in the project design, construction and operation. The project Mitigation Monitoring and Reporting Program shall be as follows:

1. The Vice Chancellor-Business, or his designee, shall be responsible for implementing mitigation measures described and for administering this Mitigation Monitoring and Reporting Program.
2. For design and construction-related mitigation measures (see Exhibit C, items 1, 2, 3, 4, 5, 6, 7, 8, 9, 10, 11, 12, 13, 14, 17, 18, 19, 20, 21, and 22):
 - a. The mitigation measures shall be submitted to the project architect, engineer, or contractor, as appropriate, for inclusion in project construction plans and contracts.
 - b. The District's project inspector shall monitor construction activity to ensure compliance with the mitigation measures and shall report any potential violations to the Vice Chancellor-Business.
 - c. Prior to acceptance of the project improvements, the Vice Chancellor-Business, or his designee, shall determine that the mitigation measures have been incorporated in the project and shall advise the Board of Trustees of this determination.
3. For biological resources-related mitigation measures (see Exhibit C, items 15 and 16):
 - a. The Vice Chancellor-Business, or his designee, shall be responsible for securing the professional services required and implementing the measures within the time frames described in the measures.
 - b. Prior to the start of any clearing or construction, the Vice Chancellor-Business, or his designee, shall determine that the mitigation measures have been implemented to the extent required by the measures for that point in the project development process (including any required coordination with the California Department of Fish and Game) and that any construction-related aspects of the measures have been incorporated in the project construction plans and contracts.
 - c. Prior to acceptance of the project improvements, the Vice Chancellor-Business, or his designee, shall determine that the mitigation measures have been incorporated in the project and shall advise the Board of Trustees of this determination.

STATE CENTER COMMUNITY COLLEGE DISTRICT
1525 E. Weldon
Fresno, California 93704

PRESENTED TO BOARD OF TRUSTEES

DATE: May 2, 2000

SUBJECT: Consideration to Approve Assessment of
Liquidated Damages and Acceptance of
Construction Project, Restroom Renovation,
Reedley College

ITEM NO. 00-119

EXHIBIT: None

Background:

Bid #9899-16 for the renovation of restrooms at Reedley College was originally awarded to Rene M. Charest Co. on August 3, 1999. The work of this project required the modification of existing restrooms in the Cafeteria, Library, Gymnasium, Social Science, and Disabled Student Services buildings to allow for improved access for disabled students. The contract called for completion of the project no later than November 7, 1999.

The original contract was terminated for failure to perform on December 2, 1999 and Frontier Pacific Insurance Company, the surety for this contract, was notified of this termination. After lengthy negotiations with Frontier Pacific, the surety hired a new contractor to complete the project in accordance with the original plans and specifications. The new contractor, DBL Construction, completed the work of the contract on March 24, 2000. The actual delay attributable to the original contractor has been determined to be 138 days. Because of this 138 day delay, per the terms and conditions of the contract, it is appropriate to assess liquidated damages in the amount of \$300.00 per day, as outlined in the contract. With this in mind, it is also appropriate that the administration and the Board of Trustees formalize the assessment of liquidated damages, thereby revising the final contract amount, prior to recording a Notice of Completion.

Recommendation:

It is recommended that the Board of Trustees:

- a) assess liquidated damages in the amount of \$300.00 per day for a period of 138 days, totaling \$41,400.00, and deduct these liquidated damages from the original contract amount, resulting in a final contract price of \$123,800.00; and

ITEM NO. 00-119 - Continued
Page 2

- b) accept the Reedley Restroom Renovation Project; and**
- c) authorize the Chancellor or Vice Chancellor-Business to file a Notice of Completion with the County Recorder.**