

State Center Vision 2035

Commission Workshop (Summer) | 20 July 2023

Agenda



Overview

- Planning Process
- Integrating Vision 2035
- Districtwide Values + Mission
- Mission to Long-Term Goals

LUNCH

Activities

- Data + Gaps
- Draft Long-Term Goals

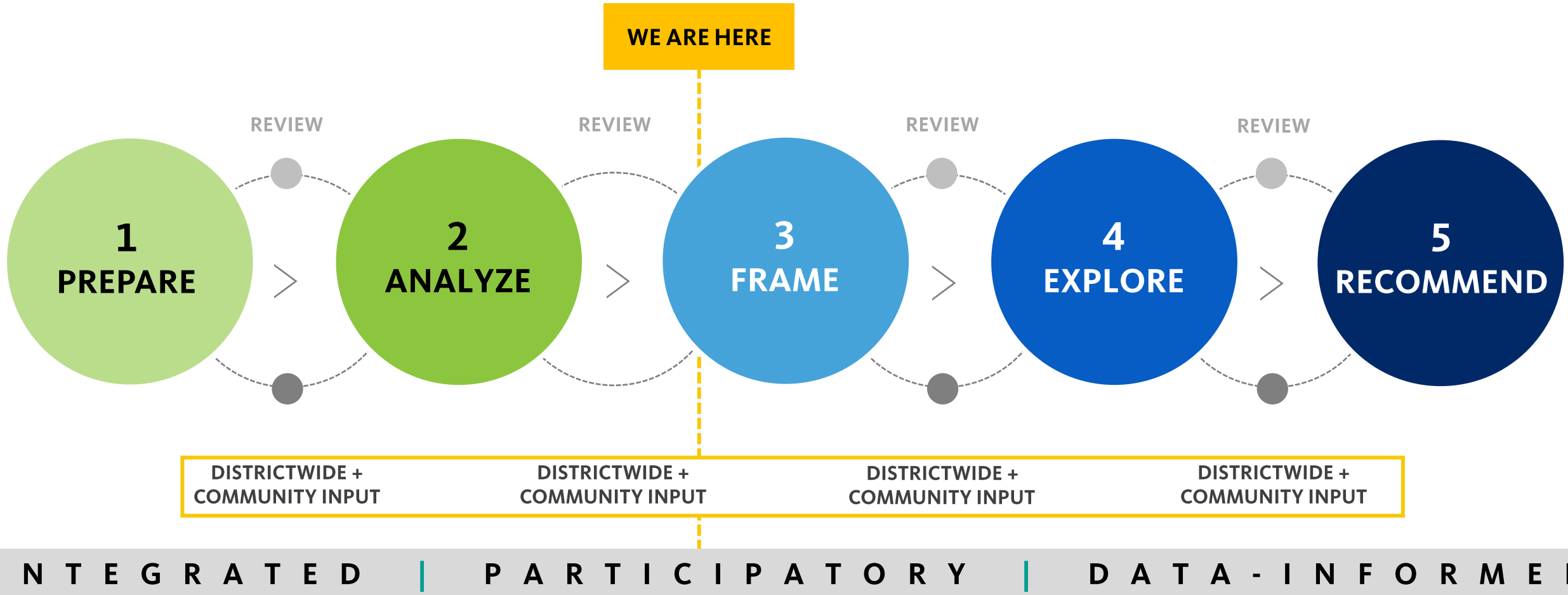


1 Planning Process

Integrated | Participatory | Data-Informed



5-Step Planning Process



FROM MISSION TO LONG-TERM GOALS

Districtwide Engagement



Campus Forums

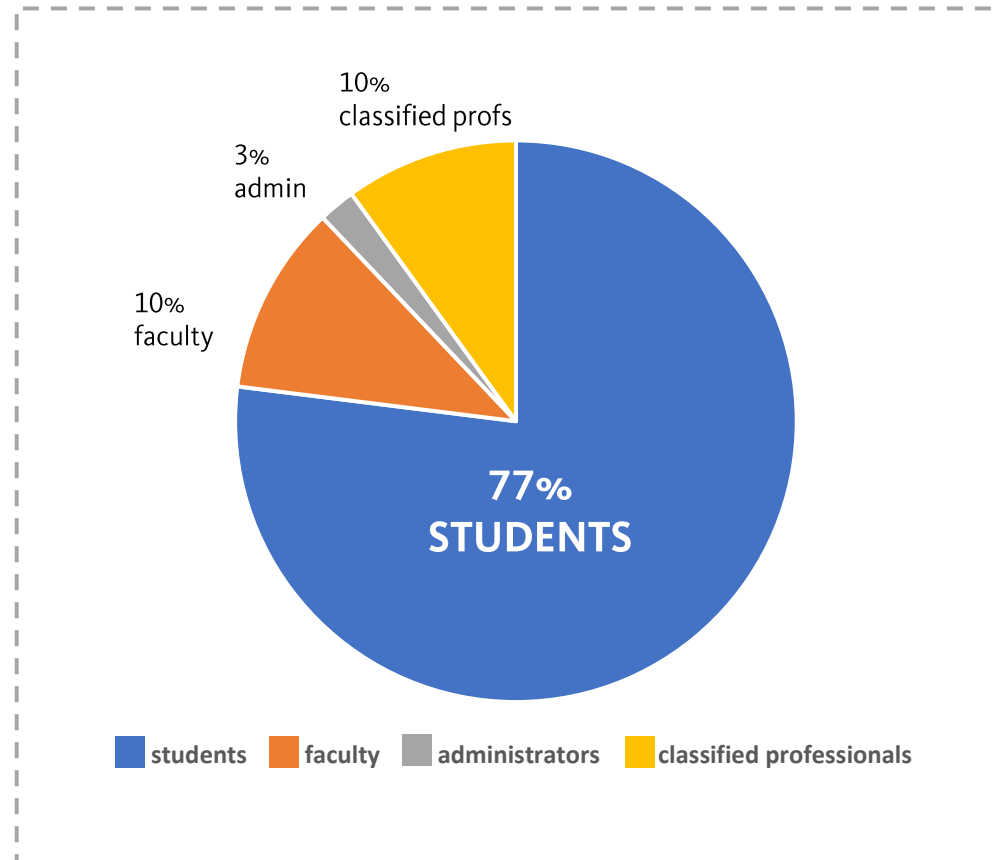


Districtwide Engagement



Online Survey

2,964 RESPONSES!

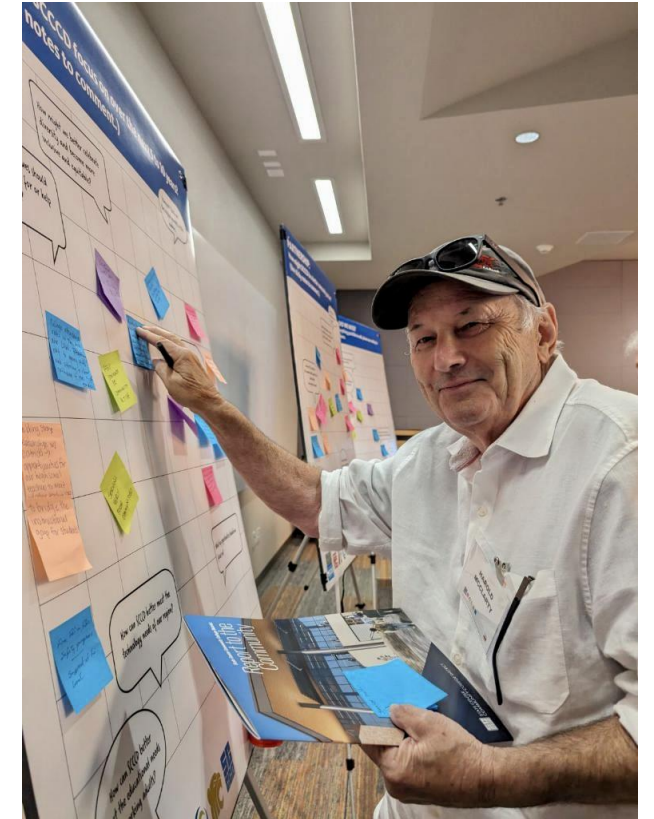
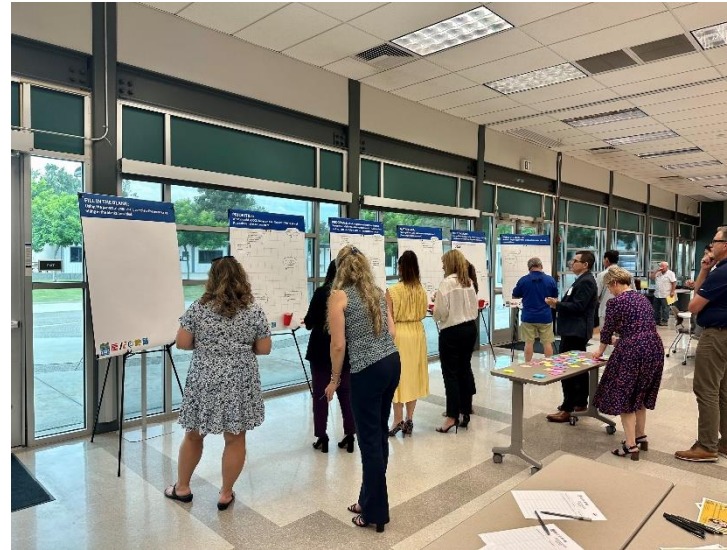


PLANNING PROCESS

Community Voices



Listening Sessions



STATE CENTER 2035 VISION PLAN

The Vision Plan will **reflect our tomorrow** as imagined by students, faculty, classified professionals, administrators, and community members.

The document will **unite the Colleges' long-term aspirations** into a **shared vision** for the district's future.



BE HEARD!
TAKE OUR SURVEY



FOLLOW OUR PROGRESS
sccd.edu/about/2035.html



Community Survey



PLANNING PROCESS

Community Voices



Listening Sessions



2

Integrating Vision 2035

With College Planning



Why?

- Develop a **shared vision for the future**
- Integrate with the **College Planning**
- Integrate the **Districtwide Mission, Vision, Values, and Districtwide Goals** with the **Districtwide Facilities Plan**

Question



Don't we need an Ed Plan to inform the Facilities Plan?

*Yes – but not the traditional, long version of
the Ed Plan*

Ed Plan Components – TRADITIONAL



- Letter from the President
- History of the College
- Planning Process
- Acknowledgements
- Integrated Planning Model

- Mission
- Vision
- Values

- External Scan
- Internal Scan
- Implications for Planning

- Long-term Goals

- *Programs and Services (optional)*

Ed Plan Components – KEY ELEMENTS NEEDED



- *Letter from the President*
- *History of the College*
- *Planning Process*
- *Acknowledgements*
- *Integrated*

- **Mission**
- **Vision**
- **Values**

- **External Scan (focused)**
- **Internal Scan (focused)**
- **Implications for Planning**

- **Long-term Goals**



- *Programs and Services (optional) – OR – Link to Program Review*

Ed Plan Components – KEY ELEMENTS NEEDED



- Mission
- Vision
- Values

- External Scan (focused)
- Internal Scan (focused)
- Implications for Planning

- Long-term Goals



DISTRICTWIDE
Long Term Goals
Facilities Guiding Principles

COLLEGE LEVEL
Facilities Strategies + Projects

Integrated Approach – NEXT STEPS



College Planning Teams to partner with us

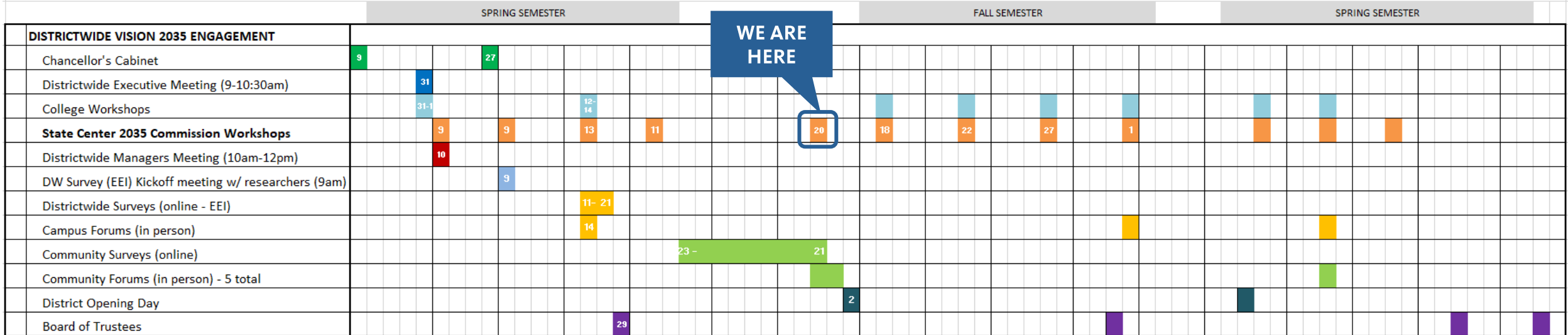
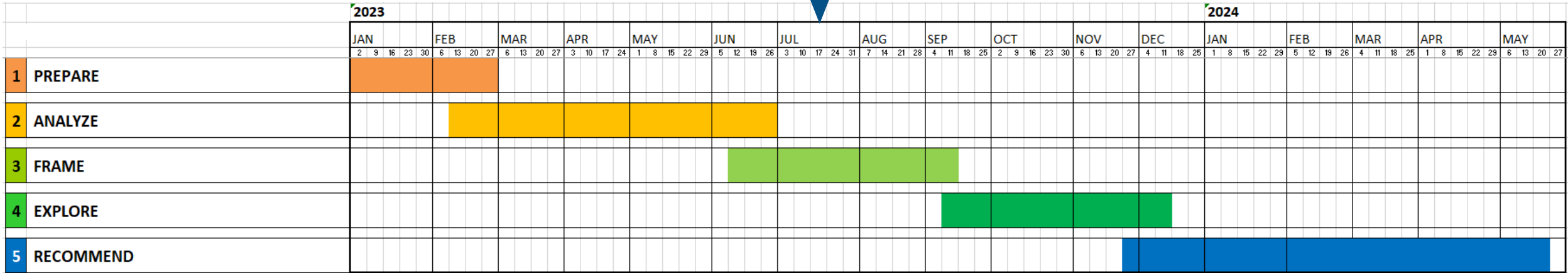
Planning Team responsibilities:

- Meet during fall 2023 to spring 2024
- Review analysis of College-specific data to identify gaps
- Identify challenges and opportunities for site and facilities
- Explore ideas for campus development
- Develop preliminary recommendations for site and facilities

Planning Teams will include:

- College President
- All Vision 2035 Commission members from that College
- Additional representatives appointed by leadership (will vary by College)

PLANNING PROCESS Timeline





3

Districtwide Values and Mission

Core Beliefs / Promises



Our Path



WE ARE HERE !!

VALUES

MISSION

**LONG-
TERM
GOALS**

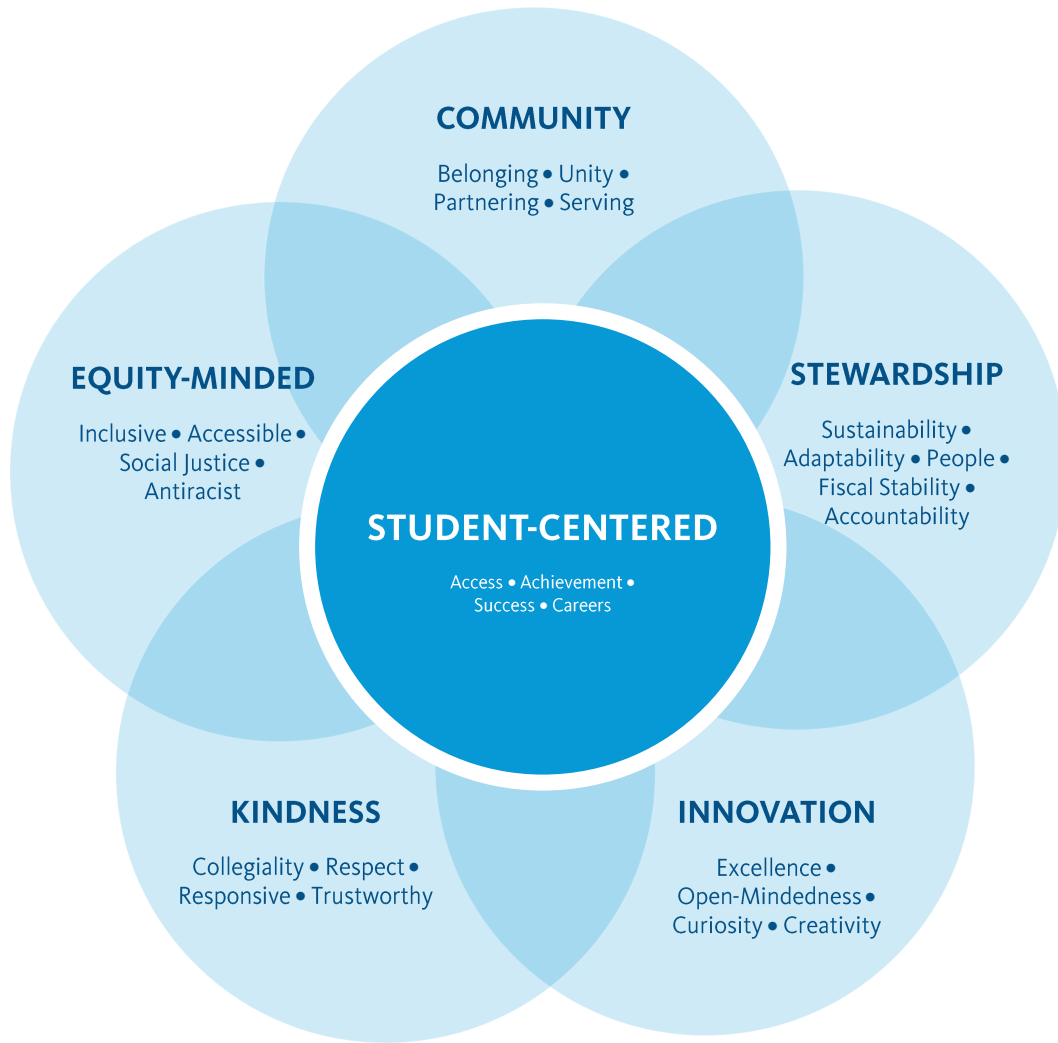
**FACILITIES
GUIDING
PRINCIPLES**

Qualitative

DATA

Quantitative

Final Drafts



Advancing equitable student access and achievement is at the heart of our work at State Center Community College District.

We – the faculty, classified professionals, administrators, and Trustees at our four colleges, off-campus sites, and District Office – are united by this commitment.

In collaboration across the District and with our community partners, we serve the diverse Central Valley and strengthen our vibrant economy. We efficiently deliver a comprehensive array of postsecondary educational programs and support services to meet a range of student needs and student goals, including associate and baccalaureate degrees, transfer, employment-ready certificates, and lifelong learning.

Together, we create innovative, inclusive, and antiracist teaching and learning environments at each of our four colleges – Fresno City College, Reedley College, Clovis Community College, and Madera Community College – that are welcoming, accessible, and student-centered, designed to bolster our students’ social and economic mobility locally, regionally, and globally.

Mission: Our Promise



1

EQUITABLE STUDENT ACCESS

Advancing equitable student access and achievement is at the heart of our work at State Center Community College District.

We – the faculty, classified professionals, administrators, and Trustees at our four colleges, off-campus sites, and District Office – are united by this commitment.

In collaboration across the District and with our community partners, we serve the diverse Central Valley and strengthen our vibrant economy. We efficiently deliver a comprehensive array of postsecondary educational programs and support services to meet a range of student needs and student goals, including associate and baccalaureate degrees, transfer, employment-ready certificates, and lifelong learning.

Together, we create innovative, inclusive, and antiracist teaching and learning environments at each of our four colleges – Fresno City College, Reedley College, Clovis Community College, and Madera Community College – that are welcoming, accessible, and student-centered, designed to bolster our students' social and economic mobility locally, regionally, and globally.

Mission: Our Promise



2

EQUITABLE STUDENT ACHIEVEMENT

Advancing equitable student access and achievement is at the heart of our work at State Center Community College District.

We – the faculty, classified professionals, administrators, and Trustees at our four colleges, off-campus sites, and District Office – are united by this commitment.

In collaboration across the District and with our community partners, we serve the diverse Central Valley and strengthen our vibrant economy. We efficiently deliver a comprehensive array of postsecondary educational programs and support services to meet a range of student needs and student goals, including associate and baccalaureate degrees, transfer, employment-ready certificates, and lifelong learning.

Together, we create innovative, inclusive, and antiracist teaching and learning environments at each of our four colleges – Fresno City College, Reedley College, Clovis Community College, and Madera Community College – that are welcoming, accessible, and student-centered, designed to bolster our students' social and economic mobility locally, regionally, and globally.

Mission: Our Promise



3

**WORKFORCE +
SOCIAL MOBILITY**

Advancing equitable student access and achievement is at the heart of our work at State Center Community College District.

We – the faculty, classified professionals, administrators, and Trustees at our four colleges, off-campus sites, and District Office – are united by this commitment.

In collaboration across the District and with our community partners, we serve the diverse Central Valley and [redacted]: We efficiently deliver a comprehensive array of postsecondary educational programs and support services to meet a range of student needs and student goals, including associate and baccalaureate degrees, transfer, employment-ready certificates, and lifelong learning.

Together, we create innovative, inclusive, and antiracist teaching and learning environments at each of our four colleges – Fresno City College, Reedley College, Clovis Community College, and Madera Community College – that are welcoming, accessible, and student-centered, designed to [redacted] locally, regionally, and globally.

Mission: Our Promise



4

ENROLLMENT GROWTH

Advancing equitable student access and achievement is at the heart of our work at State Center Community College District.

We – the faculty, classified professionals, administrators, and Trustees at our four colleges, off-campus sites, and District Office – are united by this commitment.

In collaboration across the District and with our community partners, [redacted] and strengthen our vibrant economy. [redacted] a comprehensive array of postsecondary educational programs and support services to meet a range of student needs and student goals, including associate and baccalaureate degrees, transfer, employment-ready certificates, and lifelong learning.

Together, we create innovative, inclusive, and antiracist teaching and learning environments at each of our four colleges – Fresno City College, Reedley College, Clovis Community College, and Madera Community College – that are welcoming, accessible, and student-centered, designed to bolster our students’ social and economic mobility locally, regionally, and globally.

Mission: Our Promise



5

TRUST +
COLLABORATION

Advancing equitable student access and achievement is at the heart of our work at State Center Community College District.

We – the faculty, classified professionals, administrators, and Trustees at our four colleges, off-campus sites, and District Office – are

_____ , we serve the diverse Central Valley and strengthen our vibrant economy. We efficiently deliver a comprehensive array of postsecondary educational programs and support services to meet a range of student needs and student goals, including associate and baccalaureate degrees, transfer, employment-ready certificates, and lifelong learning.

_____ ; we _____ at each of our four colleges – Fresno City College, Reedley College, Clovis Community College, and Madera Community College – that are welcoming, accessible, and student-centered, designed to bolster our students’ social and economic mobility locally, regionally, and globally.



4

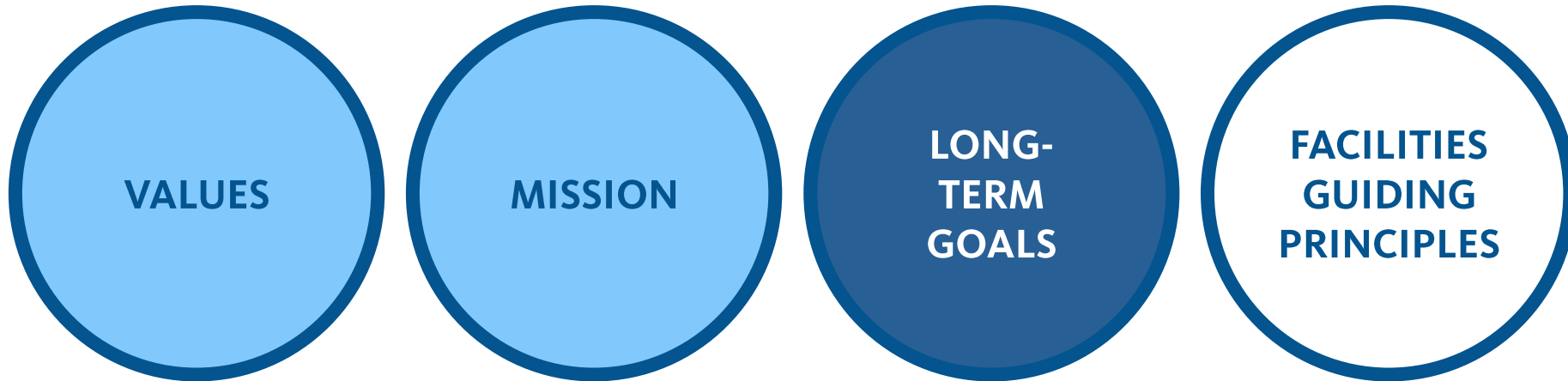
Mission to Long-Term Goals

Achieving Our Promises



MISSION TO LONG-TERM GOALS

Our Path



Qualitative

DATA

Quantitative



Analyze Data to Identify Gaps



Analyze Data



QUANTITATIVE DATA

SCCCD Key Performance Indicators

- Enrollment
- Retention + Success
 - Persistence
 - Completion
- Employment
- **Labor Market Trends**
- **Census Data**

QUALITATIVE DATA

Online Surveys and Forums

- Perceptions
- Experiences
- Aspirations
- Ideas



5

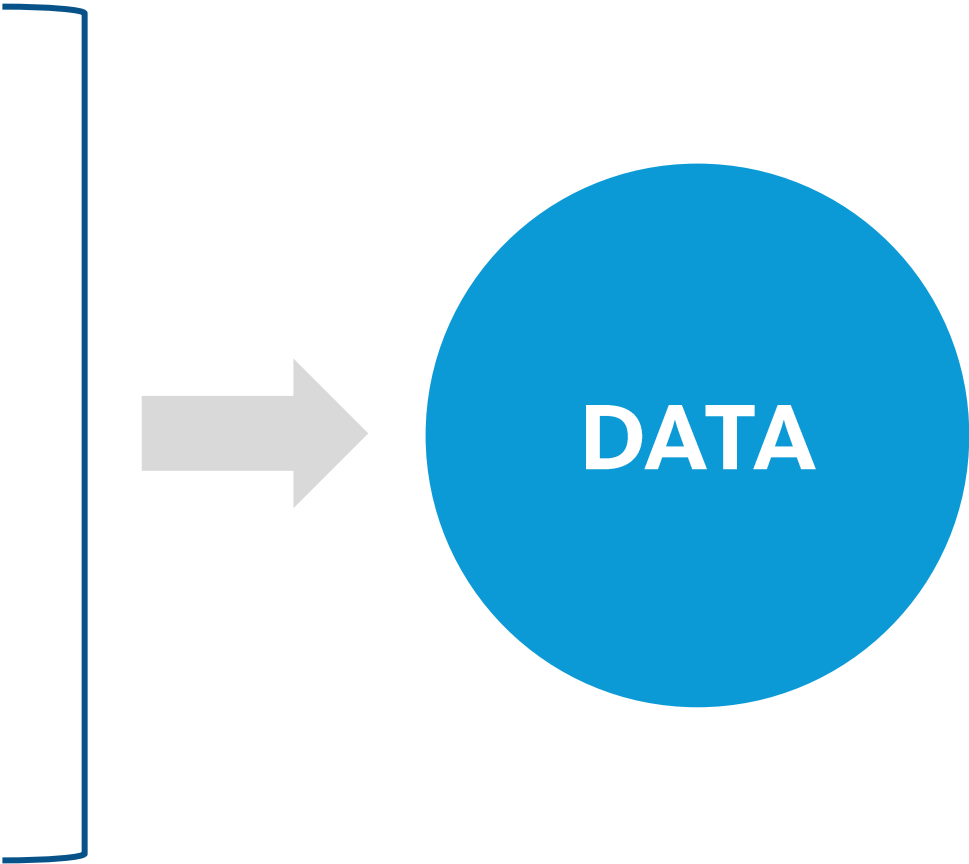
ACTIVITY 1 - Data + Gaps

To Achieve Our Promises



Promises

- 1. EQUITABLE STUDENT ACCESS
- 2. EQUITABLE STUDENT ACHIEVEMENT
- 3. WORKFORCE + SOCIAL MOBILITY
- 4. ENROLLMENT GROWTH
- 5. TRUST + COLLABORATION



Equitable Student Access



1

EQUITABLE STUDENT ACCESS

- *Do SCCCD Colleges create learning environments that are welcoming and inclusive?*
- *Do students have equitable access to educational resources and opportunities?*
- *Do students feel like they belong at the College?*

Equitable Student Achievement



2

EQUITABLE STUDENT ACHIEVEMENT

- *Are SCCCD students succeeding?*
- *Are students motivated to learn?*
- *Do students feel like they can achieve academic mastery?*

Workforce + Social Mobility



3

WORKFORCE + SOCIAL MOBILITY

- *Are the SC Colleges offering programs that their communities need?*
- *Are students prepared academically for workforce programs?*
-
- *Do students feel that they belong in College?*

Enrollment Growth



4

ENROLLMENT GROWTH

- *Given the projected changes in community demographics, how should SCCCD modify its programs and services to continue to serve the residents in its large and diverse region?*
- *What are student-centered ways to increase enrollment?*

Trust + Collaboration



5

TRUST + COLLABORATION

- *How can SCCCD achieve its mission to create internal unity in advancing equitable student access and achievement?*
- *What can SCCCD do in service of its values of Community and Kindness?*
- *In what ways can SCCCD improve its partnerships with external agencies and organizations to benefit students?*

ACTIVITY



PROMISES

1. EQUITABLE STUDENT ACCESS

2. EQUITABLE STUDENT ACHIEVEMENT

3. WORKFORCE + SOCIAL MOBILITY

4. ENROLLMENT GROWTH

5. TRUST + COLLABORATION



*GOOD
NEWS!*

*CHALLENGES /
GAPS*

6

Draft Long-Term Goals

To Achieve Our Promises



Long Term Goals to Achieve Mission (5 promises)



Shared Vocabulary



Promises to Goals



PROMISES

1. EQUITABLE STUDENT ACCESS

2. EQUITABLE STUDENT ACHIEVEMENT

3. WORKFORCE + SOCIAL MOBILITY

4. ENROLLMENT GROWTH

5. TRUST + COLLABORATION

Activity



PROMISES

1. EQUITABLE STUDENT ACCESS

2. EQUITABLE STUDENT ACHIEVEMENT

3. WORKFORCE + SOCIAL MOBILITY

4. ENROLLMENT GROWTH

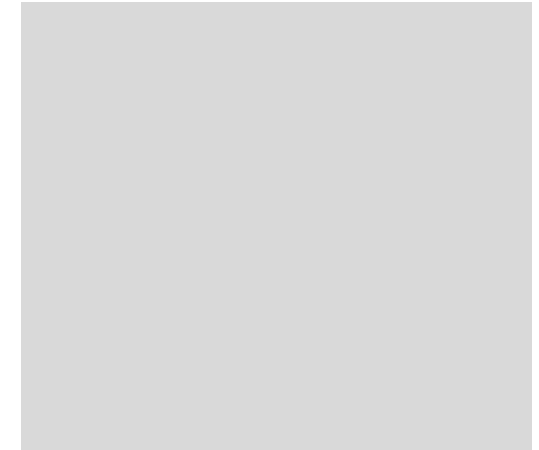
5. TRUST + COLLABORATION



GAPS



LONG-TERM GOALS



Activity: Fill in the blank



SCCCD has promised to _____ [insert the promise] _____ .

In response to _____ [insert the gap] _____ ,

we will _____ [insert a broad affirmative outcome] _____ .



7

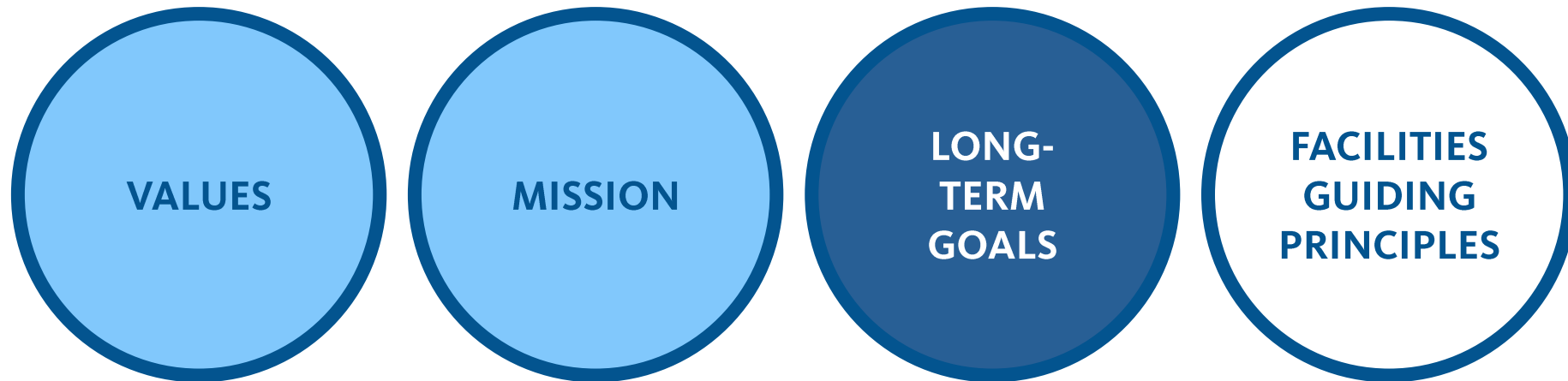
Next Steps

Create the Framework



NEXT STEPS

Finalize Long-term Goals



Qualitative

DATA

Quantitative



PLANNING PROCESS

Timeline

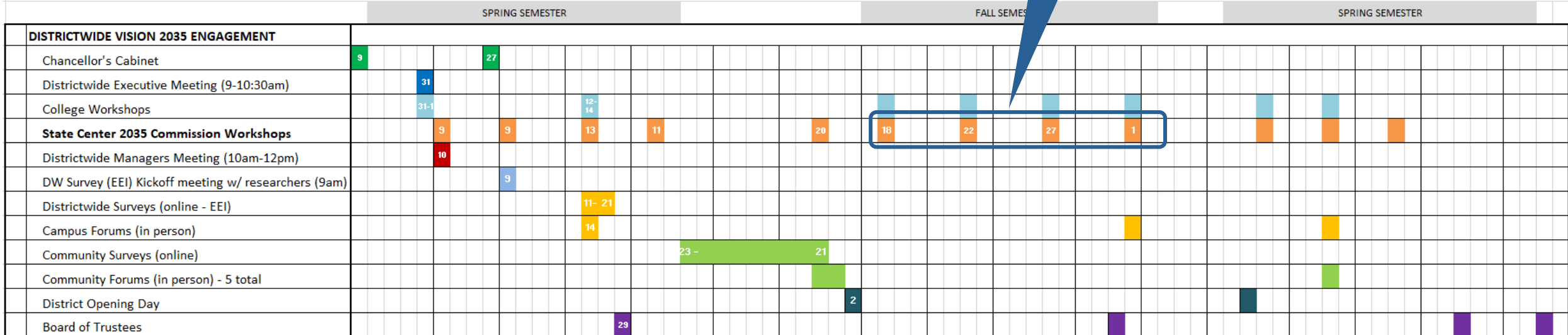
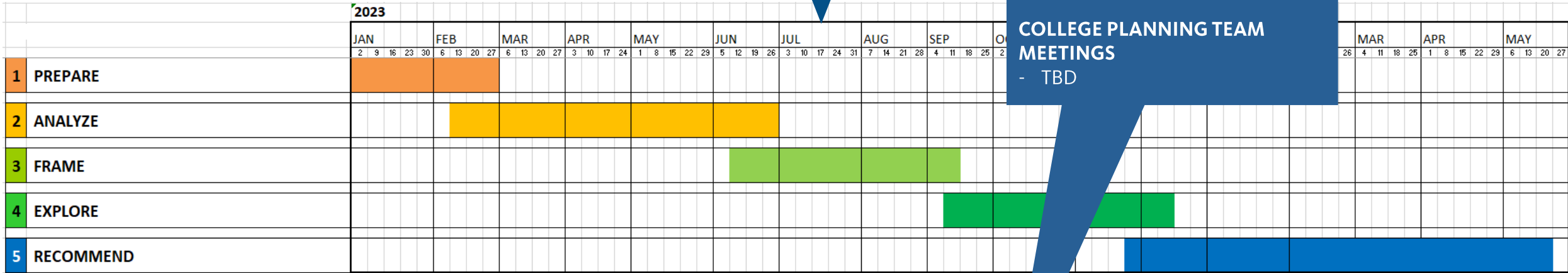


FALL WORKSHOP DATES (Fridays)

- Aug 18
- Sep 22
- Oct 27
- Dec 1

COLLEGE PLANNING TEAM MEETINGS

- TBD





State Center Vision 2035

